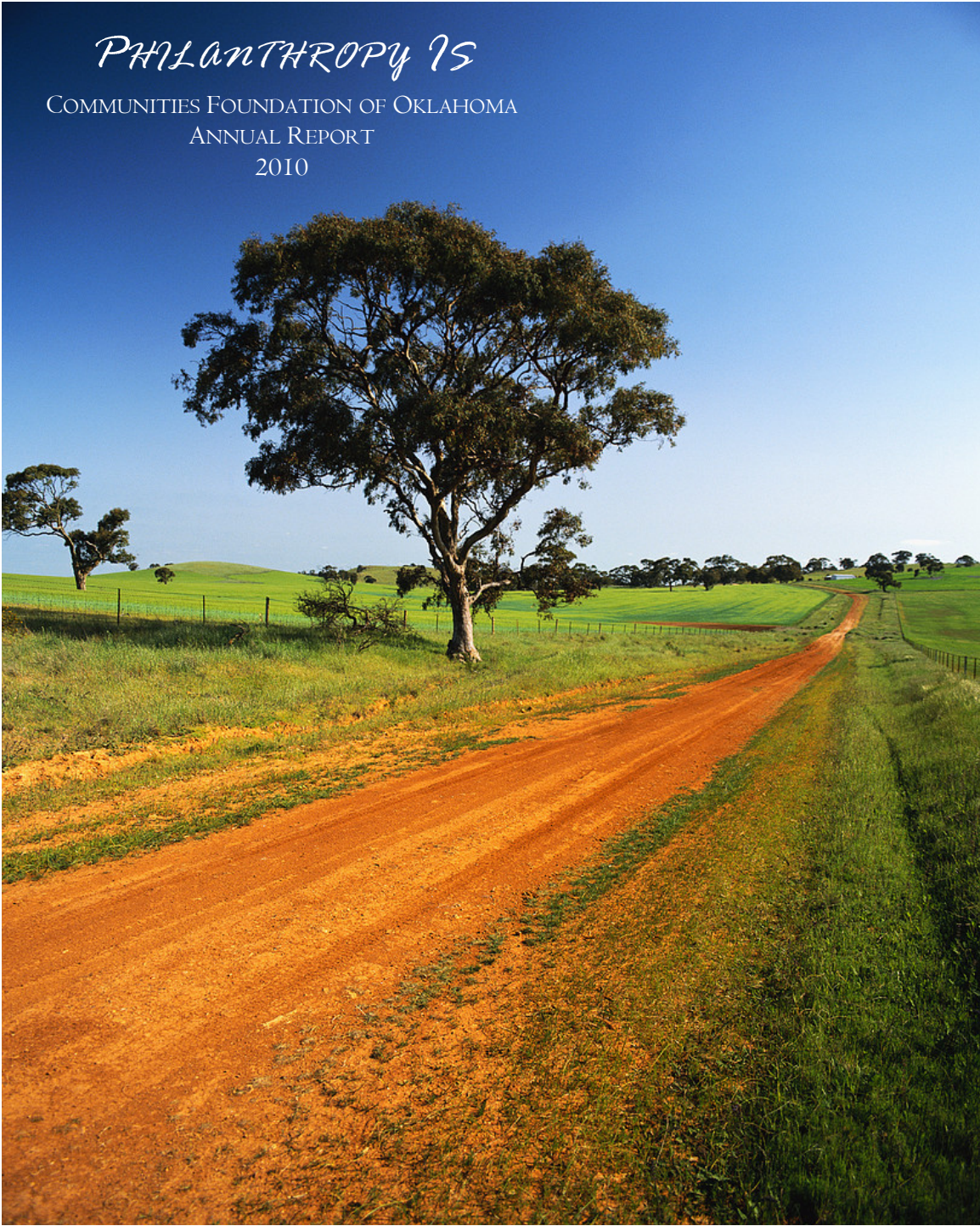


*PHILANTHROPY IS*

COMMUNITIES FOUNDATION OF OKLAHOMA  
ANNUAL REPORT  
2010



phi•lan•thro•py  
[fi-lan-thruh-pea]

*-noun*

altruistic concern for human welfare and advancement, usually manifested by donations of money, property, or work to needy persons, by endowment of institutions of learning and hospitals, and by generosity to other socially useful purposes.

Maybe Webster knows what philanthropy means, but at Communities Foundation of Oklahoma, we know how philanthropy looks.

Philanthropy is a thank you, a place to play, a degree with no debt, a computer for a classroom, a city changed, a small community with big dreams, a million dollar donation and a one dollar gift.

Philanthropy is...Communities Foundation of Oklahoma

Committed to meeting the charitable needs  
of all Oklahomans in communities  
large and small



Philanthropy is  
*a long overdue thank you*



Soldiers today are welcomed home with parades, celebrations at the airport, and communities wrapping them with support.

Soldiers thirty-six years ago were welcomed home with protests and shouting from citizens angry about the war.

No matter how each citizen may feel about the Vietnam War, the heroism of our soldiers was the same in 1973 as it is today.

In 2009, Oklahoma Governor Brad Henry decided to right a wrong and declared 2010 to be the Year of the Vietnam Veteran. To say a collective thank you, a group of community leaders, civilians and military organizations joined forces to create Operation Oklahoma—Our Salute to Vietnam Veterans.

Over the July 4th weekend, parades, concerts, motorcycle rallies, fireworks, and the Dignity Memorial Wall celebrated Oklahoma's Vietnam Veterans and gave them the public support they always deserved.

Communities Foundation of Oklahoma was honored to serve as the fiscal sponsor for the statewide event and play a role in honoring our Vietnam Veterans.

Thirty-six years — a long overdue thank you, indeed.



Philanthropy is  
*a burden lifted*



“When your high school counselors hand you scholarship applications, fill them out, every one of them! You might not get one, but you’re sure not going to get one if you don’t try!”

Listen up, high school seniors, Payton Mumford, a graduate from Fox High School, knows what he’s talking about. He took his dad’s advice, filled out his applications, and is one of over 200 students from Ardmore area schools to receive a Greater Ardmore Scholarship Foundation award.

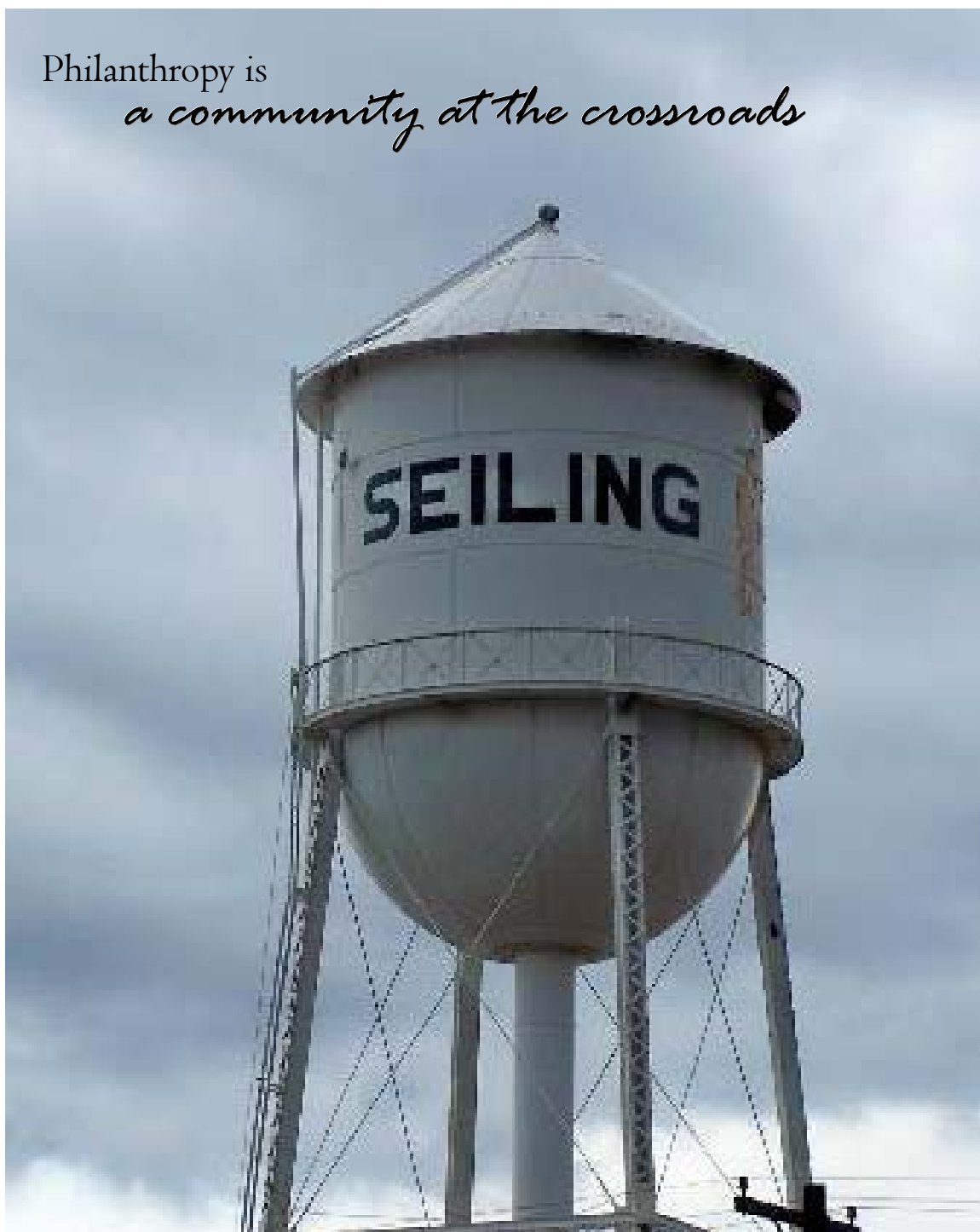
Thanks to the generosity of numerous donors in Ardmore, all students who graduate from Ardmore area high schools with a minimum of 2.8 GPA and attend an Oklahoma university are guaranteed to receive assistance.

Communities Foundation of Oklahoma’s expertise in managing scholarship funds and their students allowed the opportunity to help manage this unique city-wide program.

As a senior at Oklahoma State University’s College of Agriculture, Payton is busy applying for jobs in range land management, but he’s not worried. Completing job applications, it’s not so different than all those college scholarships and he had that down to a fine art.



Philanthropy is  
*a community at the crossroads*





Where Highways 60, 183, 270, and 281 come together, there's a small town with big goals. Seiling, Oklahoma may have less than 1,000 residents but they have enough ambition to fill up a large city.

Understanding the importance of creating a foundation for necessary community projects and needs, a group of citizens formed the Crossroads for Progress Foundation, a community fund at Communities Foundation of Oklahoma.

In a few short months, Crossroads for Progress raised over \$10,000 for their endowment fund and enough additional money to purchase two "Welcome to Seiling" signs. Next up for this group, working with the University of Oklahoma to help redesign their downtown area.

The next time you're driving in northwest Oklahoma, pull off at the crossroads and enjoy all things Seiling. You'll soon realize that this is what makes Oklahoma so fine.



Philanthropy is  
*a break from the summer heat*



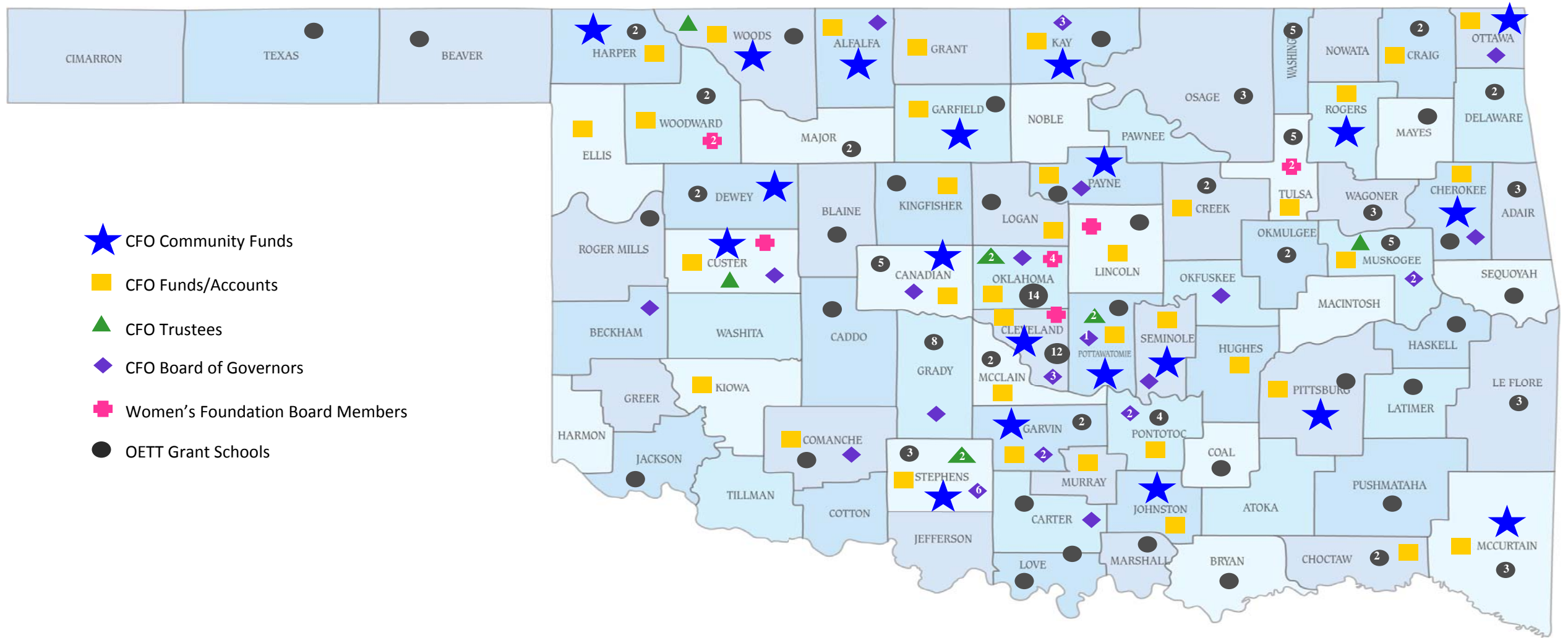
One very generous anonymous donation created a summertime of splashing, laughing, and running at the new Anadarko splash park. With ten aerial sprayers and a dozen in-ground sprayers, there is no shortage of water and fun in the sun. Constructed in Rotary Park in Anadarko, The Big Splash interactive water park is the way to beat the heat in Oklahoma.

Through a donor advised fund at Communities Foundation of Oklahoma, a generous donor was able to make his wish to create a place for kids to play in the summer a dream come true all while remaining anonymous.

Thanks to the generosity of one individual, hundreds of children in Anadarko will enjoy summertime splashing and splashing at their own splash park.



Philanthropy is  
*a state served*



Philanthropy is  
*a city making changes*



Making a real difference—this has been the City of Muskogee Foundation’s mission from the beginning.

Established in 2007, the Foundation has been focused on improving the lives of Muskogee citizens through assisting with economic development, improving health and wellness, supplementing educational opportunities, and boosting the work of nonprofit organizations.

Since 2009, the Foundation has granted over \$6 million to organizations in Muskogee. In 2010, the Foundation awarded over \$3.5 million in grants to 33 summer and ongoing programs.

Whether it’s a grant to the Port of Muskogee, Muskogee Public Schools, Oklahoma Music Hall of Fame, or Muskogee Swim and Fitness Center, the City of Muskogee Foundation is helping create an even better community.

In just a few years, the City of Muskogee Foundation has already made a difference for many citizens in Muskogee...and it’s just getting started.



*city of muskogee*  
FOUNDATION



Philanthropy is  
*a goodbye to chalkboards*

M

Maddy  
Mrs. Case  
Mrs. McKnight

Q

N

R

Red  
Riane  
Randall  
Robert  
Roystani  
Rebecca

C

S

Shyann  
Sevin  
Skylee

T

Tyson

Goet's  
EST. 19...  
MOTOR CLUB  
We... To Ride...  
MOTOR CLUB  
The... U.S.

\$12 million + 138 schools + 60,000 students + 4,000 teachers & administrators = 1 better state

With one \$30 million gift from AT&T Oklahoma and the vision of former Attorney General Drew Edmondson in 2001, the Oklahoma Educational Technology Trust was created and education was changed for the better.

Managed by Communities Foundation of Oklahoma, OETT funds new technology equipment in classrooms and provides specialized professional development for teachers.

School reform may just now be making the news, but at OETT, we've been reforming schools for over a decade, one Smart board at a time.

**2010 Grant Schools**

Bartlesville High School  
Choctaw High School  
Grove Valley Elementary School, Deer Creek  
Webster Elementary, El Reno  
Idabel Middle School  
Maryetta Elementary School  
Steed Elementary School, Midwest City  
Newcastle High School  
Pocola High School  
Ringwood Public Schools  
Silo Elementary School  
Sulphur Junior High School  
Tuttle Middle School





## MAKING AN INVESTMENT

By offering several types of funds, Communities Foundation of Oklahoma gives donors many options on how to give back to the communities, causes and organizations important to them.

### Types of Funds

Designated Endowment Funds	established by a donor(s) to provide permanent endowment for a specific nonprofit or charitable activity
Agency Endowment Funds	created by a nonprofit organization to provide permanent endowment for its projects, needs and activities
Fiscal Sponsorship Funds	created for a specific project or purpose as a short-term fund and may be used if no 501(c)3 exists for an organization
Donor Advised Funds	created when a donor would prefer more input into annual distributions and would like to distribute funds to any number of charitable concerns each year
Scholarship Funds	designated for awarding scholarship dollars to students selected by a committee representing fund advisors or the Communities Foundation of Oklahoma's Grant Committee
Field of Interest Funds	allows donors to target gifts to causes important to them through grants in their specific interest area
Unrestricted Funds	addresses a broad range of current and future needs across the state as determined by Communities Foundation of Oklahoma
Escrow Funds	established when a donor wishes to place funds with Communities Foundation of Oklahoma without immediately designating a specific charity or purpose



## LEADERSHIP

### Officers

Richard Ratcliffe, Weatherford | Chair

Malinda Berry Fischer, Stillwater | Vice-Chair

Leslie Rainbolt-Forbes, Oklahoma City | Secretary

Jimmy Cooper, Duncan | Treasurer

### Trustees

Laurie Fuller, Muskogee

Mary Marks Jenkins, Oklahoma City

Monica McCasland, Duncan

Richard Ryerson, Alva

April Stobbe, Shawnee

### Committee Volunteers

Melinda Barton

Kathie Coyle

Don Sickles

Jon Trudgeon

Jayna Vaughn

### Advisory Board of Governors

Ed Apple, Duncan

Steve Beebe, Duncan

Ron Beer, Stillwater

Lou Christian, Blanchard

Julie Cohen, Norman

Terrence Cooksey, Duncan

Richard Dixon, Duncan

Nancy Ford, Shawnee

Mary Beth Glass, Newkirk

Terry Graham, Cherokee

Lou Hall, Pauls Valley

Jean Harbison, Lawton

James Howard, Tahlequah

Hilary Kitz, Tulsa

Craig Knutson, Norman

Jodi Lewis, Oklahoma City

Tom McCasland, Jr., Dallas

James Menzer, Blackwell

Melvin Moran, Seminole

Marilyn Murrell, Arcadia

Dr. Donnie Nero, Warner

Susan Paddack, Ada

Ann Powell, Norman

H.E. 'Gene' Rainbolt, Oklahoma City

Connie Reilly, Okemah

Larry Roberts, Miami

Jim Rodgers, Blackwell

Wes Stucky, Ardmore

Pam Treadwell, Muskogee

Arlen Williams, Pauls Valley

### Women's Foundation of Oklahoma Advisory Board

Claudia San Pedro, Oklahoma City | Chair

Rita Aragon, Maj. Gen. (ret.), Edmond

Merle Chambers, Denver, CO

Kathie Coyle, Tulsa

Deena Fisher, Woodward

Joe Anna Hibler, Weatherford

Sandy Ingraham, McLoud

Melinda Johnson, Oklahoma City

Anne Morgan, Norman

Sharon Neuwald, Oklahoma City

### Oklahoma Educational Technology Trust Trustees

Lela Odom | Chair

Keith Ballard

Phil Berkenbile

Steven Crawford

Dan Hattaway

Jeff Mills

State Senator Susan Paddack

Bob Stafford

State Representative John Wright

### Management Team

Frank W. Merrick | President, FMI

Susan R. Graves | Executive Director

Sherrie Schroeder, CPA | Chief Financial Officer, FMI

Amy Klinge | Advancement Director

Adrienne Hare & Lauren Garey | Scholarship Coordinator

Anna Elder | Administrative Assistant

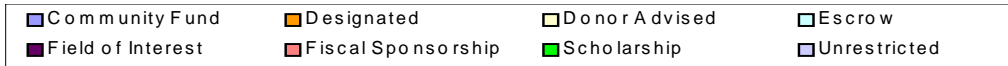
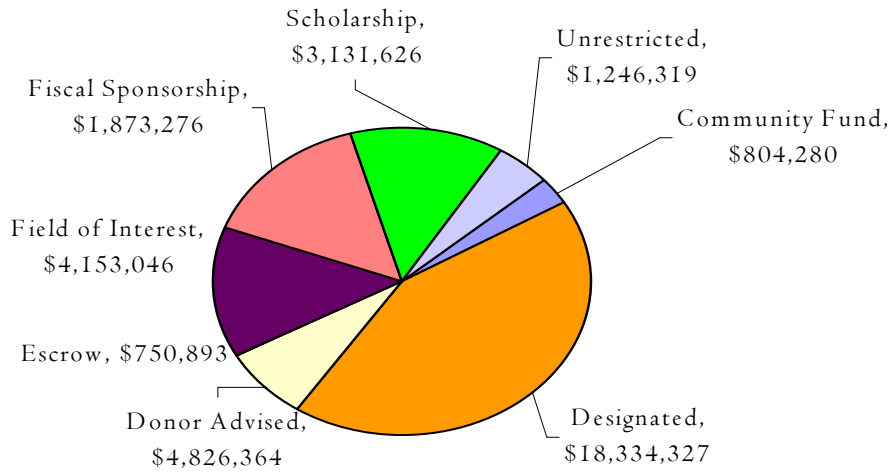
## FINANCIALS

### Statements of Financial Position

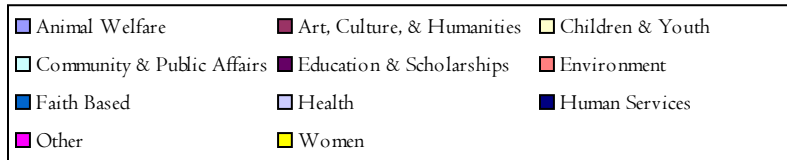
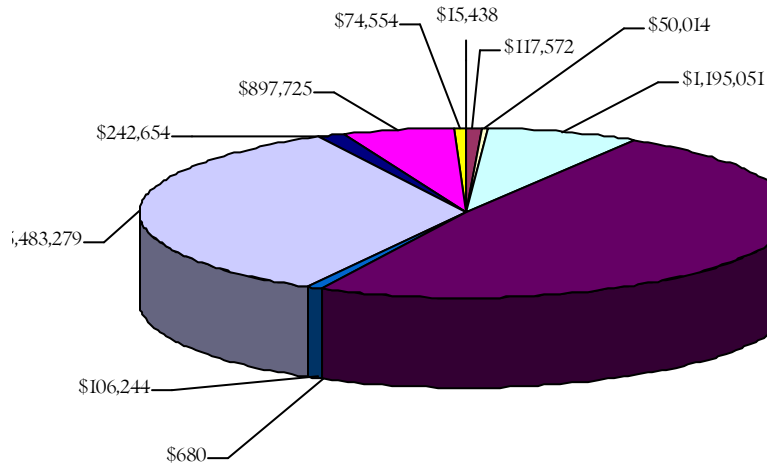
	June 30	
	<u>2010</u>	<u>2009</u>
<b>ASSETS</b>		
Cash & Cash Equivalents	\$ 5,812,853	\$ 3,870,076
Contributions Receivable, net	649,869	915,128
Investments	30,198,269	21,874,275
Property & Equipment, net	-	-
<b>TOTAL ASSETS</b>	<u>\$ 36,660,991</u>	<u>\$ 26,659,479</u>
<b>LIABILITIES &amp; NET ASSETS</b>		
Accounts Payable	\$ 53,042	\$ 45,101
Grants Payable, net	1,619,939	608,322
Agency Transfers Subject to SFAS 136	16,974,418	10,623,352
<b>TOTAL LIABILITIES</b>	<u>18,647,399</u>	<u>11,276,775</u>
<b>NET ASSETS</b>		
Unrestricted	<u>18,013,592</u>	<u>15,382,704</u>
<b>TOTAL LIABILITIES &amp; NET ASSETS</b>	<u>\$ 36,660,991</u>	<u>\$ 26,659,479</u>

Statements have been audited by Cole & Reed, P.C. Complete audit report, Form 990, and IRS tax exemption documents may be downloaded at [www.cfok.org](http://www.cfok.org).

### Assets by Fund Type as of June 30, 2010

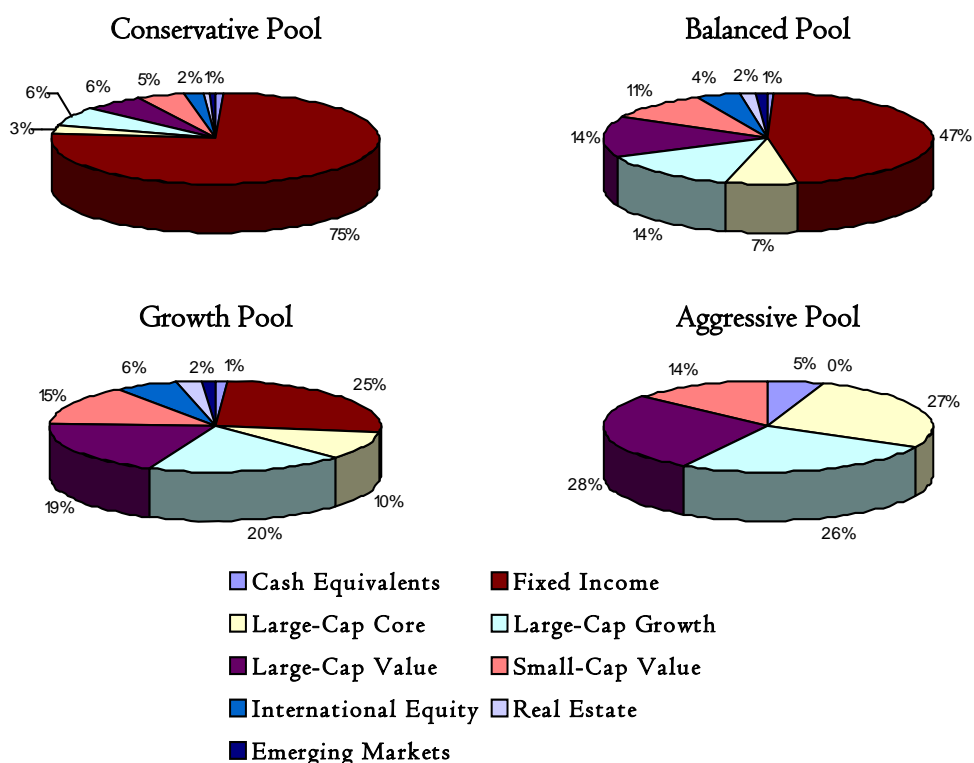


### Grants & Distributions as of June 30, 2010



Investment Pools  
as of June 30, 2010

Current Allocations



Performance — Balanced Pool

	Trailing 12 Months	3-Year (Annualized)	5-Year (Annualized)
Portfolio	12.7%	-2.3%	2.2%
Benchmark: S&P 500 Index/BC Int. Agency (rebalanced monthly)	10.5%	-2.1%	2.3%

Additional information on individual investment managers, portfolio performance on individual investment pools, and investment fees are available upon request.

To create your vision of what philanthropy is in  
your hometown, visit the Communities  
Foundation of Oklahoma's website @  
[www.cfok.org](http://www.cfok.org).



**COMMUNITIES FOUNDATION OF OKLAHOMA**

2932 N.W. 122nd, Suite D • Oklahoma City, Oklahoma • 73120  
405.488.1450 • 877.689.7726 toll-free • 405.755.0938 fax  
[www.cfok.org](http://www.cfok.org)