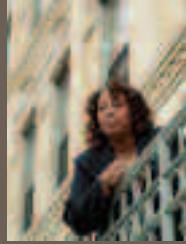


**Affordable
Housing in
New York City:
An Oxymoron?**

contents



1 Welcome

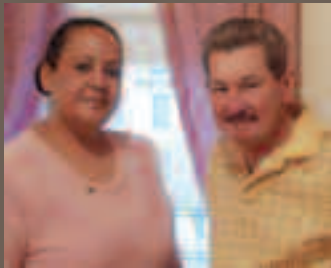


2 Want to make a difference?
Our chairman has some suggestions.



3

The “bottom line.” Our president discusses how we measure success.



4

Giving. Affordable housing in New York City—no, it’s not an oxymoron.



18

Make sure your charitable dreams come true: Become a donor.

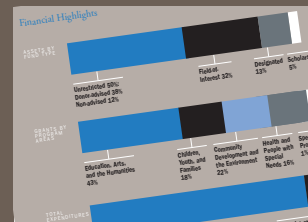


22

Help make your clients happy: Information for attorneys.

24

The numbers: Our audited financial statements.



Notes	27
Auditors’ Report	29
Financial Highlights	30
Investment Committee	30
Governing Body	31
Suburban Divisions	34
Trustee Banks	38
Staff	39
Funds in 2006	40
Grants in 2006	52

welcome



SINCE 1924, THE NEW YORK COMMUNITY TRUST HAS BEEN HELPING MAKE DONORS' CHARITABLE DREAMS COME TRUE BY FUNDING THE NONPROFITS THAT MAKE OUR CITY A VITAL AND SECURE PLACE IN WHICH TO LIVE AND WORK. WE HAD ASSETS OF \$2 BILLION IN MORE THAN 1,800 CHARITABLE FUNDS IN 2006, AND MADE GRANTS TOTALING \$157 MILLION. WHETHER YOU'RE GIVING TODAY, OR ENDOWING A FUND TO SUPPORT A CAUSE OR SOLVE PROBLEMS WE CAN'T NOW IMAGINE, THE TRUST MAKES IT EASY TO BE A PHILANTHROPIST. WE INVITE YOU TO LEARN ABOUT US AND HOW TO JOIN OUR FAMILY OF DONORS.



chairman's message

As more and more City neighborhoods are transformed into areas for luxury housing, many of our less fortunate residents are being displaced and are unable to find affordable apartments. The Trust's 2006 Annual Report focuses on grants we have made to address this problem. The following pages illustrate how our grantmaking programs can effectively respond to a critical—and seemingly intractable—issue in a variety of ways, such as making grants to organize tenants, supporting an advocacy group to increase State financing, and protecting low-income homeowners from predatory lenders.

The primary sources of funding for these grants were The Trust's unrestricted and field-of-interest funds, each of which provides The Trust with flexibility in its grantmaking.

About two-thirds of The Trust's assets are held in funds set up by donors who wanted to establish flexible, permanent funds during their lifetimes, or leave a legacy through bequests and deferred giving plans. Some of these funds were left to us with

no strings attached; others come with a broad or narrow field of interest, such as health or city parks. So when there is a compelling City need for which we have no specified funds—such as affordable housing—we use money from funds established by individuals who trusted that future generations would use their generosity to effectively meet contemporary problems.

An equally important aspect of our grant program is The Trust's 900 donor-advised funds, which also provided a source for the grants listed in this Annual Report. Under this arrangement, a donor reserves the right to recommend the charities to receive grants from his or her donor-advised fund and the purposes for which the grants shall be used. There is great synergy among grants from our unrestricted, field-of-interest, and donor-advised funds. Many donors consult with our program officers for guidance prior to making a recommendation; often our program officers gain important insights from our donors based on these donors' experience with other charities and their knowledge of particular areas of need.

Finally, I want to pay special tribute to our outstanding staff at The Trust and to our president, Lorie Slutsky, whose reputation as one of the pre-eminent leaders in the not-for-profit world is well deserved.

SAMUEL S. POLK



president's message

“These have been the happiest years of my life,” says an exuberant Melanie Harris, who lives in housing developed by New Destiny, one of the grantees we feature in the Giving section of this report. You’ll find out the number of housing units the agency has produced, and how it shares its expertise with other nonprofit housing developers. You’ll also read about the capitalization of a housing loan fund, and correcting code violations in apartment buildings for low-income tenants. But hearing the joy in Ms. Harris’s voice when she describes her life since moving into her apartment is, ultimately, The Trust’s bottom line. It’s what makes our work so rewarding.

And that’s a good thing, because much of what we support doesn’t lend itself to quick or easy resolution. Whether it’s affordable housing, job training for the chronically unemployed, helping poor people get health care, protecting our water quality, nurturing young artists, or improving public education, we are committed to funding a variety of approaches—bringing

to scale programs that have proven effective or testing new ways of doing things. It requires working with government, other funders, and the business sector. It most often takes a lot of time and tolerance of frustration and failure, and always the optimism and efforts of many people and agencies.

And if you read further on, you’ll find out how you can make your charitable dreams come true, for yourself and for many more people like Melanie Harris.

LORIE A. SLUTSKY

giving



“THERE HAD BEEN TWO FIRES IN OUR BUILDING,” SAYS RAMONA SANTANA. “WE FOUND OUR WAY TO HOUSING HERE AND NOW. THE ORGANIZER WENT WITH US TO THE BANK THAT HOLDS THE MORTGAGE ON THE BUILDING, AND GOT THEM TO TALK WITH THE OWNER AND HAVE HIM MAKE THE NECESSARY REPAIRS. HOUSING HERE AND NOW TAUGHT ME THE STEPS I NEED TO TAKE TO ENSURE MY RIGHTS AND I’M WORKING WITH OTHER FAMILIES TO PRESERVE AFFORDABLE HOUSING IN MY NEIGHBORHOOD.”

The astronomical cost of living in the City has been a hot topic for years. And as with lots of issues, there's a fault line. On one side is "real estate." On the other, "housing." The first often implies owning, the second, renting. And while some bemoan the scarcity of real estate, the housing shortage is truly frightening.

There's an air of inevitability about the notion of the City becoming a haven for the rich and a shrinking ghetto for the poor, with no place for middle class New Yorkers. Leaving aside for the moment the issue of equity, New York's sense of itself—as a city of neighborhoods, mom and pop stores, and many cultures and classes—is crumbling. As Adam Gopnick writes in the January 8, 2007 issue of *The New Yorker*:

. . . another bookstore closes, another theatre becomes a condo, another soulful place becomes a sealed residence. . . . Only twenty-five years ago, a walk from Tribeca to SoHo and the Lower East Side would show as many kinds and classes—rich, aspiring, immigrant—as it had a century before; now that walk is likely to show only the same six stores and the same two banks and the same one shopper.

For more than 30 years, The Trust has supported a host of approaches to revitalizing communities by building and preserving decent, affordable housing. Beginning in the 70s, when landlords walked away from buildings whose rent rolls didn't support their costs, the City found itself the largest owner of deteriorating

housing in the poorest neighborhoods. And it wasn't a good landlord. New York was then a city in decline, unable to pay for much-needed services. Crime soared, streets got dirtier, mass transit didn't work, people left. And the City's tenants lived in unheated apartments, with peeling lead paint, intermittent hot water, gaping holes, and no security.

But residents came together, forming tenants' associations and small community groups to advocate with the City. And the City responded with a number of programs that allowed tenants to take over their buildings, with money for repairs. The Trust made grants to many of the newly formed housing groups, and we started our Neighborhood Revitalization Program, which supports housing and economic development projects in low-income communities.

Today, the City is a different place. There are virtually no City-owned buildings; neighborhoods that once terrified their residents have been gentrified; and for many New Yorkers, life is good.

But for poor and middle-income New Yorkers, young people, and the elderly, finding and keeping a decent apartment they can afford are still a nightmare. Mayor Bloomberg's affordable housing initiative, which will spend \$7.5 billion to build and rehab 165,000 units, is certainly welcome. Unfortunately, it's not enough.

The Trust has been making grants to develop new sources of capital and financing, strengthen nonprofit housing groups, advocate, organize tenants, and monitor the effects of housing policies on poor communities. This section

The Santana family and neighbors.



looks at the work of six of the twenty-five non-profits we supported in 2006 to preserve and build affordable housing.

HOW ELUSIVE IS THE AMERICAN DREAM?

Despite the proliferation of condo and coop conversions, New York has the lowest homeownership rate of any big city in the country, at just under 33 percent. Jamaica, a predominantly black neighborhood in southern Queens, is an exception, where 51 percent of the housing units are owner-occupied. But the cost of affordable housing has tripled in the past five years, opening the door to sub-prime lenders. Neighborhood Housing Services of Jamaica has been helping residents become homeowners since 1974 and staffs the South Queens Anti-Predatory Lending Task Force, made up of representatives from local lending institutions, Queens Legal Aid, the Commission of Human Rights, and the Queens Borough President's Office.

Last year, agency staff reported seeing mortgages that start out with 1 percent interest rates for the first three months—and then jump to 14 percent. Neighborhood Housing Services expects that homeowners with these adjustable

mortgages will increasingly become the targets of predatory lenders. To “outmarket” predatory lenders, the agency, with its extremely limited marketing budget, is getting the word out through local City Council members, flyers, newspaper ads, and presentations to block associations. It continues to counsel first-time homebuyers, offer classes on home repairs, broker mortgages, home repair loans, and help those who are in danger of losing their homes because of deceptive lending.

WHAT ABOUT THE RENTERS?

Located in northeastern Brooklyn along the Queens border, Cypress Hills is a neighborhood of 2-family homes and small apartment buildings, bursting at the seams. Largely Latino, with a burgeoning influx of immigrants, it has recently been targeted by predatory lenders offering sub-prime mortgages. As a result, many families have been enticed into buying houses they can't afford or that need substantial repairs, and end up in foreclosure—and in every foreclosure, tenants lose their apartments. Others, whose landlords are saddled with expensive building mortgages, struggle to bear the burden of higher rents and sub-standard apartments.

Despite the proliferation of condo and coop conversions, New York has the lowest homeownership rate of any big city in the country, at just under 33 percent.



It took four years on a waiting list, but the Medina family, through the Cypress Hills Local Development Corporation, finally bought their first home.

**Neighborhood
Housing Services
of Jamaica teaches
homeowners
how to make
basic repairs.**



The Cypress Hills Local Development Corporation has produced 300 units of housing and gotten \$2 million in grants and loans for local homeowners. But the bulk of their work is with tenants, counseling individuals and helping tenant associations. Last year, one building the agency worked with had 400 code violations. With our grant, the agency is mediating with landlords, documenting building code violations and coordinating inspections, applying to the City’s emergency repair program, and working with managing agents.

Housing Here and Now, which started in 2005, is an unincorporated association of unions, clergy, community housing groups, and advocates for the homeless. Its members came together with a shared concern about rising rents and a commitment to conduct sophisticated research and policy analysis. The agency has completed

two research projects: one documented the City’s failure to monitor repairs in more than 1,500 apartment buildings cited for serious code violations; another revealed that several problem landlords were on the list of approved recipients of the City’s rent subsidy program for families moving out of homeless shelters.

Last year, the agency created its Fix It Now campaign to pressure problem landlords by enlisting the financial institutions that finance them. Housing Here and Now asked them to join the campaign by agreeing to monitor the conditions of buildings in their portfolios. Citibank and New York Community Bank—which specialize in loans for multi-family apartment buildings and have a combined portfolio of 900 buildings and some 66,000 units—signed. Using the threat of withholding a loan rather than foreclosure to enforce the “good repair” clauses in their

Many families have been enticed into buying houses they can’t afford or that need substantial repairs, and end up in foreclosure—and in every foreclosure, tenants lose their apartments. Others, whose landlords are saddled with expensive building mortgages, struggle to bear the burden of higher rents and substandard apartments.

New Yorkers' ingenuity is truly tested by the loss of the City's most potent subsidy—government-controlled buildings and land—but, perhaps not surprisingly, innovative financing mechanisms are being developed.

loans, both banks agreed to consider outstanding code violations and/or emergency repair liens as grounds for declining mortgage requests. The New York State Superintendent of Banking recently cited these agreements as an innovative “best practice” at a forum for lending institutions. Housing Here and Now is enlisting additional banks to join Fix It Now, and estimates that 2,500 units will receive major repairs as a result of the campaign in the coming year.

BUT WHO WILL PAY FOR THE BRICKS AND MORTAR?

New Yorkers' ingenuity is truly tested by the loss of the City's most potent subsidy—government-controlled buildings and land—but, perhaps not surprisingly, innovative financing mechanisms are being developed.

A group of government officials, nonprofit housing intermediaries, and funders, including The Trust, came together in 2005 to create a financial vehicle for affordable housing production and preservation—The New York City Acquisition Fund. Participants quickly agreed that low-interest loans for acquisition and other predevelopment costs would be the Fund's primary function and that loans would be originated and referred by the City's leading nonprofit housing intermediaries. Most important, they agreed that the Fund would operate in tandem with existing City programs, providing critical gap funding for a mix of projects ranging from supportive housing with on-site ser-

vices for very low-income families and individuals, to moderate-income housing for civil servants who are being priced out of the market.

Early in 2006, the Acquisition Fund was capitalized with \$40 million in initial commitments—an \$8 million deferred loan from the City and \$32 million in program-related investments from five national foundations. The \$40 million will serve as a guarantee pool, minimizing the risk of potential defaults and leveraging additional commitments from the City's leading financial institutions. To date, the Fund has pledged of approximately \$190 million in low-interest loans from several banks.

The Acquisition Fund expects to process \$70 million in loans in the next 18 months. Local for-profit and nonprofit developers will use loan proceeds to acquire private property and perform a variety of predevelopment activities, including environmental remediation and engineering studies. Ultimately, the Fund expects to be the catalyst for the construction and preservation of some 30,000 units of affordable housing in the next ten years.

BUILDINGS + SERVICES: SHELTER FOR THE MOST VULNERABLE

As tough as the housing market is for low-income families, some poor people are particularly vulnerable—including those who are disabled or chronically ill. Poor women, and their children, who have left abusive partners have a par-

ticularly urgent need to find decent, affordable housing. They have a champion in the New Destiny Housing Corporation, which was started to develop housing for domestic violence survivors. In addition to doing its own projects, the agency offers real estate development services to other nonprofits, helping with siting, financing, and construction management. Since 2003, New Destiny has produced more than 200 units, including the City's first emergency housing for physically disabled victims of domestic abuse.

New Destiny is now working on two new housing projects—a 38-unit apartment building in the Fordham section of the Bronx and a 35-unit complex in Brooklyn's Bed-Stuy. Both are designed to reach lower-income groups and will require deeper subsidies and more on-site services.

PRESSING THE POLITICIANS

Housing First!, a coalition of more than 300 financial institutions, for-profit and nonprofit developers, property owners, nonprofits, advocates, and religious leaders, has been advocating for substantial and sustained City investment in affordable housing since 2001. The group is credited with influencing the creation of the mayor's housing initiative, the single largest public commitment to affordable housing by any city in the nation.

Last year, Housing First! began to examine the impact of State housing programs and policies in localities throughout New York. Although the nature of the problems vary—for example, upstate communities face growing abandonment and blight, while downstate communities are among the least affordable in the country—the common theme was a statewide housing crisis with no plan for putting State resources

in communities and constituencies where the need is greatest. After months of research and deliberation, the agency developed a platform calling for \$13 billion over ten years to create and preserve at least 220,000 affordable housing units statewide. The platform includes specific recommendations for redirecting existing resources and generating new sources of revenue for housing programs, and was endorsed by a wide range of organizations, housing developers, and financial institutions.

Housing First! used the November elections to bring the affordable housing crisis to statewide attention, but the jury is still out on its impact. Many housing advocates have greeted favorably Governor Spitzer's new commissioners of Sony Mae and the Department of Housing and Community Renewal, but the governor has yet to offer any concrete proposals. Housing First! is continuing to press for its agenda.



"A city . . . is the pulsating product of the human hand and mind, reflecting man's history, his struggle for freedom, creativity, genius—and his selfishness and errors."*

Visitors to the City are frequently overwhelmed by its density, diversity, and pace. But New Yorkers live in neighborhoods, each with its own sounds, tastes, and panoramas. Preserving those differences—"mixed up, fragrant, and hopeful... a place for plain people and pilgrims and plutocrats alike," in Adam Gopnick's phrase—is a worthy task for all of us. And with the generosity of our donors, The New York Community Trust will play a small, but vital, role.

*Charles Abrams, former chairman, Department of City Planning, Columbia University, in *The City Is the Frontier*, Harper & Row, 1965



“Living here has been so much a part of my healing and growing experience,” says Mary Williams. “It helped me and my five children recover—and thrive—after living in an abusive situation.”

selected grants



MEN WHO ARE READY TO LEAVE RIKERS ISLAND WILL HAVE A HARD TIME FINDING JOBS. BUT WITH JOB TRAINING AND BUSINESS CLOTHES, THEY'VE GOT A SHOT. CAREER GEAR, WHICH WORKS WITH JOB TRAINING PROGRAMS ACROSS THE COUNTRY, TAUGHT INMATES ON RIKERS HOW TO MAKE GOOD IMPRESSIONS IN JOB INTERVIEWS, AND GAVE THEM THE CLOTHES TO DO IT IN.

To get a full flavor of our grant-making, we've given thumbnail sketches of selected grants in each of our program areas. We urge you to read our grants newsletter, issued six times a year, for a full view of our grants program.

CHILDREN, YOUTH, AND FAMILIES

Girls & Young Women

Equality Now, to advocate for a State law to protect women forced into prostitution and prosecute those involved in human trafficking.

New York Academy of Medicine, for a program to interest middle school girls in science and medicine.

Hunger & Homelessness

Career Gear, to give clothes and job training to male inmates on Rikers Island prior to their release.

Food Bank of New York, to update a study on hunger in order to focus feeding programs where they are most desperately needed.

Social Services & Welfare

New Yorkers for Children, to help the City's Administration for Children's Services coordinate the handling of child abuse cases with other City agencies, including the Police Department and the Department of Education.

NYC Early Childhood Professional Development Institute, to collect data on the early childhood workforce in order to improve the quality of care in early childhood programs.

Substance Abuse

Outreach Project, to strengthen discharge planning for troubled teens in a residential drug treatment program so that they don't return to chaotic, unhealthy, and often dangerous homes.

New York University, Center for Health, Identity, Behavior, and Prevention Studies, to study the rising use of methamphetamine by young, gay men in order to develop effective prevention and treatment programs.

Youth Development

IMPACT Coalition, to start debate teams in 10

high-need Queens public high schools to encourage kids who are performing at below average levels to finish high school and go to college.

New York City Department of Youth & Community Development, to examine the City's General Equivalency Diploma system and recommend improvements so that adults and older youth who have not finished high school can get diplomas.

COMMUNITY DEVELOPMENT & THE ENVIRONMENT

Civic Affairs

Citizens Union Foundation, to reform New York State's voting system.

Independent Press Association, to improve reporting and business operations at independent, ethnic, and community newspapers.

Community Development

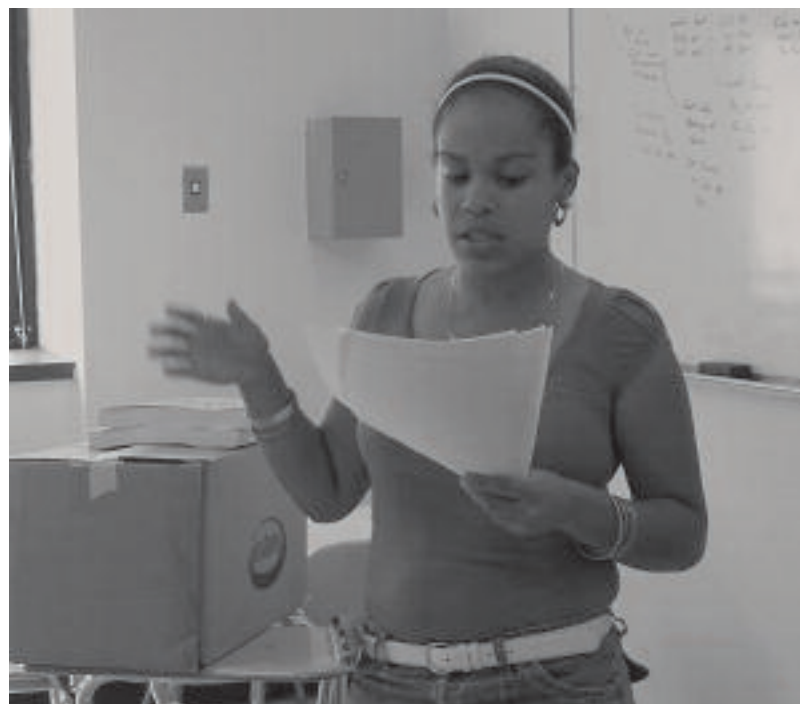
New York Industrial Retention Network, to ensure that waterfront rezoning doesn't eliminate blue collar jobs.

Project Enterprise, to help low-income entrepreneurs to develop very small businesses, primarily through peer lending and business training.

Workforce Development

NPower New York, to provide affordable technology services to nonprofits and expand a pro-

Using a traditional method—debating teams—IMPACT Coalition inspires students to finish high school and go to college.



With two small loans from Project Enterprise, Karen Tappin-Saunderson built an on-site kitchen at her store, Karen's Body Beautiful in Brooklyn, and added e-commerce to her Web site. She now employs eight community residents and is renovating a second retail location.



gram that trains disadvantaged young adults for technology jobs in nonprofits.

Workforce Professional Training Institute, to expand an organization that builds the skills of employment professionals who help jobseekers.

Technical Assistance

Nonprofit Finance Fund, to offer sophisticated financial analysis and consulting to nonprofits.

United Neighborhood Houses, to improve the financial and management systems of settlement houses, which serve a half million New Yorkers each year.

Environment

NEW YORK CITY:

New York Restoration Project, to clean up Sherman Creek, a natural inlet on the Harlem River and a tidal estuary, and landscape a pedestrian trail northward along the creek.

In June 2006, New York Restoration Project staff and volunteers planted Loblolly Pines and Panic Grass along the Sherman Creek shoreline.



West Harlem Environmental Action, to find technical solutions to the problem of diesel fuel emissions from school bus engines that threaten the health of children and drivers, and to advocate for school bus retrofits.

NATIONAL & INTERNATIONAL:

Institute for Agriculture & Trade Policy, to promote the use of plastics made from plant material rather than petroleum and toxic chemicals.

One Region Fund, to start a funders' grant-making program to support transportation projects in New York, New Jersey, and Connecticut that make transit and roads more efficient, encourage real estate development close to transportation hubs, and invest in aging infrastructure.

EDUCATION, ARTS & THE HUMANITIES

Arts & Culture

WNYC Radio, to expand arts and cultural programming as the station moves to new, larger headquarters.

World Music Institute, to increase public recognition of an organization that presents concerts featuring artists from more than 70 countries.

Education

Social Science Research Council, for an independent partnership of the City's leading educational research institutions to collect and analyze Department of Education data and issue reports on the results of its policies and practices.

Historic Preservation

El Barrio's Operation Fightback, to convert a historic school building in East Harlem to provide affordable housing and work space for artists.

Prospect Park Alliance, to design and restore the Concert Grove in Prospect Park in accor-

dance with Olmstead and Vaux's original landscape.

Teaching Matters, to use technology to improve middle school students' research and writing skills.

Human Justice

LawHelp/NY, to add multi-lingual resources to its Web site to help immigrants find legal help.

Sanctuary for Families, to provide legal representation, advice, and referral for immigrant African women who are victims of domestic violence.

HEALTH & PEOPLE WITH SPECIAL NEEDS AIDS

Legal Action Center of the City of New York, to increase awareness of the rapid spread of HIV among women of color and to develop and advocate for effective prevention programs.

New York AIDS Coalition, to advocate for continued federal funding of AIDS services in New York City.

Biomedical Research

Columbia University Mailman School of Public Health, to continue a longitudinal study of the effects of environmental toxins on children's health and development.

Mount Sinai School of Medicine, to advocate for funding a network of medical centers that can track children with environmentally induced disease and improve treatment.

Blindness & Visual Disabilities

Lighthouse International, for a diabetic retinopathy treatment program and to start a home visiting program for frail elders with vision problems.

SUNY, College of Optometry, to screen and treat minority elders with low-vision problems who live in naturally occurring retirement communities.

Children & Youth with Disabilities

Cooke Center for Learning & Development, to prepare children who have language and learning delays for kindergarten.

Hunter College of CUNY, for an exercise program for disabled children and youth.



Elderly

Brooklyn Bar Association Volunteer Lawyers Project, for legal services for the elderly.

Medicare Rights Center, to help elders understand and apply for the Medicare Part D drug benefit.

Health Services

New York City Alliance Against Sexual Assault, to expand access to SAFE programs—emergency clinics in hospitals for sexual assault victims—to every victim.

Urban Health Plan, to open a community health center in Corona, Queens.

Health Systems & Policy

Community Health Care Association of NYS, to test the effectiveness of a diabetes management program in community health centers.

Primary Care Development Corp., to determine the need for and siting of additional primary care clinics in the City.

Mental Health & Mental Retardation

Maimonides Medical Center, to add health services to psychiatric clinics run by South Beach Psychiatric Center.

Mental Health Association of New York, to analyze the effect of hospital closings on psychiatric care.

SPECIAL PROJECTS

American Society for the Prevention of Cruelty to Animals, for mobile veterinary clinics in poor neighborhoods.

BoardSource, to strengthen the boards of directors of New York City nonprofits.

Young adults who aren't in school and not working get trained for technology jobs by NPower New York.



“Every woman who is a victim of domestic violence should have this opportunity, and I, and other women in the building, are working together to make that happen.”

how to apply for a grant

The Trust makes grants in four general areas: Children, Youth, and Families; Community Development and the Environment; Education, Arts, and the Humanities; and Health and People with Special Needs. We are committed to sticking with significant issues that may not lend themselves to quick or easy solutions, while remaining open to projects that tackle emerging problems and to organizations that may be new to us.

Grants are made primarily to nonprofit organizations located in the five boroughs of New York City. Our suburban divisions handle grants on Long Island and in Westchester (page 34).

Grants for programs outside our area generally are from funds designated for specific charities or that have been made at the suggestion of donors.

Applicants should begin by requesting “Guidelines for Grant Applicants” and one or more of the four brochures that describe in detail each of our grantmaking areas. We also suggest that you request copies of our bimonthly grants newsletter to get a sense of the kinds of projects we currently fund. Please call our receptionist at (212) 686-0010, ext. 0, or visit our Web site, www.nycommunitytrust.org.

If, after you have read our guidelines, you believe that your proposed project meets our criteria, send us a cover letter along with a completed application form (enclosed with the guidelines), and a copy of the proposal—not more than 10 pages plus appendices. Include in your letter a brief summary of the proposal, the amount requested, and the results expected. We do not accept proposals sent by fax or e-mail.

Please note that we don’t make grants to individuals and rarely for endowments, building campaigns, deficit financing, films, general operating support, or religious purposes.

We have no specific submission deadlines. Our Distribution Committee meets six times annually, and grant applications are accepted throughout the year.

We’ll let you know within two weeks that we have received your material. During the review process, Trust staff will analyze your proposal, determine if and how it fits into our grantmaking program, and check to see if there is adequate money available in an appropriate fund. We’ll get in touch with you if we have further questions or need more information.

The Trust welcomes your application, but because we can’t fund every proposal submitted to us, we urge you to send yours to several other funders as well.

becoming a donor

The New York Community Trust offers donors with every kind of philanthropic interest an easy and flexible way to accomplish their charitable objectives and receive the maximum tax deduction allowed by law.

TYPES OF FUNDS

An **unrestricted fund** is a good option for donors who want to be assured that their gift will always be used to meet vital needs and improve the quality of life in New York City. Our staff is expert in identifying community needs and the nonprofits best equipped to meet them.

A **donor-advised fund** is an unrestricted fund legally, but the donor recommends the organizations to receive grants. Although we cannot, by law, be bound by these recommendations, we take them very seriously and approve grants to recommended nonprofits that meet charitable standards for programmatic and financial soundness.

In a **field-of-interest fund**, charitable giving is focused on issues of concern to the donor, such as child and family welfare, youth, education, human justice, conservation, or health policy. The Trust makes grants that meet current needs in the chosen fields. Field-of-interest funds can also be established to be advised by the donor.

IN FOCUS: JUDITH E. TURKEL



Turkel Forman & de la Vega LLP is a small law firm with an eclectic practice. Two of its practice areas—wills, trusts, and estates and family law—con-

centrate in the unique legal needs of gay men and lesbians and families who are not traditionally recognized. Partner Judith E. Turkel has referred clients to The Trust who have set up funds during their lifetimes to be funded at death as well as other clients who have set up donor-advised funds to help them with their charitable giving and tax planning.

“I feel confident referring my clients to The Trust,” says Turkel. “It’s an old and secure institution, with a highly competent, informed, and caring staff. And they are particularly receptive and sensitive to the needs of our LGBT clients. I am so confident of their professionalism that my domestic partner and I have set up our own fund to receive our retirement assets when they’re no longer needed.”

Ms. Turkel also co-chairs the board of SAGE (Services and Advocacy for GLBT Elders). In 2006, The Trust, using income from our Katharine A. Park Fund for the



Elderly and the Sam Wilner Fund, established to benefit the gay community, made a grant to strengthen the agency’s operations.



IN FOCUS: HUYLER HELD

“In over forty years of practicing law in New York, one of the simple lessons I have learned is to trust the professionals. My expertise is trust and estate law.

Because I am an enthusiastic New Yorker, I also know a bit about our city’s charitable sector. But I cannot profess to have the breadth of knowledge or the time or the reach of a well-established institution like the New York Community Trust.

My first experience with the Trust dates back to the late 60’s. I was the lawyer for and one of the executors of the estate of the then well-known anthologist and poet Oscar Williams. No less of a poet than Robert Lowell wrote that he was “probably the best anthologist in America.” In giving me instructions with respect to his Will, Oscar told me that he was anxious to provide funds to help struggling artists and poets such as his wife, the painter Gene Derwood, and he had been at the start of their careers, as well as more senior artists and poets who had fallen on bad times.

After his death my co-executor and I created a fund at the Trust whose purpose was to carry out Oscar’s intentions. The assets contributed to the fund were royalties from the 15 major titles which he created. I am very pleased to note that over time this modest fund has grown from an initial \$70,000 to over \$700,000 today. I like to think that Oscar and Gene would be pleased by the numerous artists who have been helped over the years, and as his lawyer I have to admit a degree of relief in not having been saddled with figuring out how to make the idea work year in and year out.

It is clear to me that the Trust understands some of the City’s most intractable problems. With that in mind, I established the Rhodebeck Fund for the Elderly and the Rhodebeck Fund for the Homeless. The former fund has made grants ranging from teaching elderly immigrants how to speak English to supporting a neighborhood development group that counsels and assists elders who are victims of predatory

lenders. The latter fund has made grants to a church-based soup kitchen in Jamaica Queens and to a watchdog organization that monitors compliance with the City’s shelter services for homeless families.

Of course, many people use the Trust for its virtually seamless administration of donor-advised funds. I have recommended it to a number of clients, particularly to those seeking anonymity. The arrangement works very well, since I have reason to know that the Trust is careful to shield the identity of its anonymous donors.

While I am pleased to have established 17 different funds at the Trust (a record, I suspect, which I happily challenge my fellow lawyers to meet and surpass), the fund that most gratifies me is the one that I have established through my own Will. God willing, its funding will not happen any time soon; however, I am confident that when it is established, the staff at the Trust will respect and carry out its purposes as carefully and thoughtfully as if I were still alive to check on them.”

A **designated fund** is for donors who want to support specific organizations but recognize that the world may change. They establish a designated fund in The Trust rather than leave it directly to the charity to assure that their gift remains relevant over time and responsive to changing circumstances. (See page 23 for an explanation of the variance power.)

SETTING UP A FUND

Each donor establishes a fund with a minimum of \$5,000. Donors first decide what they want to accomplish with their philan-

thropy; our staff is happy to help clarify and refine goals. They then choose the name of the funds, typically using their own names or the names of individuals to be honored or memorialized. Donors who prefer anonymity can choose a general name.

There are at least three ways of giving to a fund with us.

Giving Now: You can set up a fund to support charities during your lifetime and endow it to continue your philanthropy for future genera-

tions. Many of our donors regularly add money to the funds they have established.

Deferred Giving: Donors can set up funds through deferred-giving arrangements. A key feature of many estate plans is a tax advantage to you now for the commitment of a charitable gift later. Charitable Remainder Trusts, Charitable Lead Trusts, and gifts of life insurance or retirement plan assets can all be used.

Wills: After providing for personal bequests,

you may include provisions for setting up a fund with us or adding to one you already have here. You will save estate taxes and ensure that the charitable work you care about will be continued.

TYPES OF ASSETS

Funds may be established with the following: cash, securities traded on major exchanges, closely held stock, mutual fund shares, retirement plan assets, real estate, interests in limited partnerships, and literature copyrights. *In 2007, individuals*



IN FOCUS: ALAN PATRICOFF

“I have lots of interests, both in the business arena and in the charitable arena. I even enjoy putting the two worlds together when it makes sense.

As a venture capitalist I've helped small businesses both here and abroad incubate, hatch, and thrive. Obviously, our government's support of a business environment that encourages investments is of interest to me, which is why I served President Clinton as chairman of the White House Conference on Small Business. My business interests have ranged from helping now giant companies AOL and Apple grow from their infancy, to being a founder of *New York Magazine*.

In the charitable arena, I've tried to apply my knowledge of small business development to support micro-enterprise efforts, both here in the U.S. and abroad. I serve on the boards of TechnoServe, Trickle Up Program,

National Foundation for Teaching Entrepreneurship, and the Global Advisory Board of Endeavor. My wife Susan is similarly focused, chairing the Northside Center for Child Development, and serving on the boards of the International Rescue Committee, Mailman School of Public Health at Columbia University, and the Global Foundation for Humanity.

Obviously, our board memberships, government work, and financial success come with obligations, and Susan and I share the belief that supporting charitable enterprises that help the poor is something we're very happy we're able to do. And here's where The New York Community Trust fits in. We've had a fund at The Trust for more than 25 years. It's a donor-advised fund, the kind of fund where we recommend the grants. We hear about a good program; we want to support it; we ask The Trust to fund it. Easy as pie.

But what we value most about The Trust is its investigative function. We may hear of a charity that sounds pretty good, but it's The Trust that investigates the grantee and asks for financial and managerial details far in excess of what I have the time for. Even for a modest \$1,000 grant.”

A grant in 2006 from the Patricoff Family Foundation Fund supports the Northside Center for Child Development, which fosters the healthy development of children and families through comprehensive, high-quality mental health and educational services, coupled with research.



who have reached age 70 1/2 can contribute up to \$100,000 from their IRAs directly to charity (but not to a donor-advised fund) without paying income tax on the distribution. You may want to consider establishing an unrestricted or field-of-interest fund.

We are glad to discuss proposed contributions with you. We may not be able to accept assets that cannot readily be converted to the financial benefit of charity or that carry unusual potential liability.

FUND ADMINISTRATION AND FEES

A fund established with our organization may be held in trust with one of our 13 trustees (see page 38), or it may be held by Community Funds, Inc., our not-for-profit corporation. Both operate as The New York Community Trust with a single governing body. If a fund is set up in trust, the bank handles the investments. If it is set up in Community Funds, our distinguished Investment Committee oversees the performance of the outside portfolio managers. The determining factor is the inclination of the donor. The service we provide is the same.

The administrative fee charged to our funds is 3/10th of 1 percent (30 basis points) or 2.5 percent of grants paid of assets, whichever is greater.

Funds that are held in trust are also charged a trustee's fee set by the bank. It may be negotiated between the bank and the donor at the inception of the fund, and varies from bank to bank.

The Internal Revenue Service has classified The New York Community Trust and its affiliate, Community Funds, Inc., as "tax exempt" under Section 501(c)(3) of the Internal Revenue Code; as a "publicly supported" organization under Section 170b(1)(A)(vi); and as "not a private foundation" under Section 509(a)(1). This status ensures donors the maximum tax benefit allowed by law. The

Long Island Community Foundation and the Westchester Community Foundation (described on page 34) are divisions of Community Funds.

A FUND IN THE TRUST, A PRIVATE FOUNDATION—OR BOTH?

A fund in The Trust provides a very attractive alternative to establishing a private foundation. We are a public charity with the attendant tax advantages. A full-time professional staff takes care of all the administrative and grantmaking activities, eliminating the need to set up a separate institution, formulate policies, file innumerable forms, and monitor the status of grant recipients. Establishing a private foundation can take months and be costly; with The Trust, the legal apparatus is already in place, and creating a fund can take less than a day.

For some people, a private foundation is the preferred option, but many donors with private foundations also have funds with us. Often, the donor uses a fund here to support causes and nonprofits that are outside the general focus of the private foundation. And almost all want to increase the impact of their philanthropy by joining other generous New Yorkers who care about the City.

We also offer substantial advantages over most commercial donor-advised funds: lower fees, smaller minimums, the capacity to accept unusual gifts, and an in-depth knowledge of the nonprofit community. Because our business is philanthropy, we can help make sure that your money makes a difference.

FURTHER INFORMATION

The New York Community Trust is happy to work with you or with your lawyer, trust officer, or other financial advisor. We invite you to get in touch with us at any time. Call our general counsel Jane L. Wilton (Ext. 379), Robert V. Edgar (Ext. 373), or Gay Young (Ext. 377) in our Donor Relations Department at 212-686-0010.

guidelines for attorneys



WHEN WE ASKED CAMILLA PARRISH TO TALK WITH US ABOUT HER NEW APARTMENT, SHE SUMMED UP HER EXPERIENCE WITH A BRIEF, BUT TO THE POINT, ANSWER: “WE’RE A HAPPY FAMILY.”

Establishing a fund in The New York Community Trust for your client is a relatively straightforward process. Our comprehensive booklet, *Creating a Fund Here: Suggested Words and Procedures*, provides all the relevant information: The Trust's tax classification letter, descriptive material on the different types of funds, and suggested language to help you draft instruments to provide for gifts to our organization. Call us to receive a copy.

THREE IMPORTANT FACTS

We are unable to accept a fund unless its terms have been reviewed by us and found acceptable. It is particularly helpful if we review the language before the instrument is executed to ensure that we can meet the donor's purpose.

For funds held in trust as part of The New York Community Trust, a co-trustee is not permitted.

All our funds enjoy an important advantage: If a change of circumstances makes literal compliance with the terms of the gift instrument "unnecessary, undesirable, impractical, or impossible," our governing body is able to vary them. Donors are assured that their gifts will never become obsolete; they will remain useful to the community in perpetuity.

Donors have the option of setting up funds in The New York Community Trust with a bank as trustee or in our not-for-profit corporate affiliate, Community Funds, Inc. The organizations share a governing board and file a single tax return with the IRS.

CREATING A FUND IN THE NEW YORK COMMUNITY TRUST

The Resolution and Declaration of Trust Creating "The New York Community Trust" (the R&D) is a complete trust instrument. It sets out in detail the powers and duties of the Trustee Bank and the Distribution Committee. In order to establish a fund in The New York Community Trust, the founding document—whether for a bequest or a gift during lifetime—must incorporate the R&D by reference.

An advantage of The New York Community Trust is that it is not a private foundation subject to certain requirements, and the separate funds that constitute The New York Community Trust are component funds of a public charity, not private foundations. It is important, therefore, that an instrument designed to create a new component fund in The New York Community Trust adhere strictly to the provisions of the R&D; please call us for a copy.

CREATING A FUND IN COMMUNITY FUNDS, INC.

Community Funds, Inc. is a New York State not-for-profit corporation. As with a fund in The New York Community Trust, a fund established in Community Funds becomes part of a publicly supported organization, and is not regarded as a private foundation. The fund is held and administered pursuant to the provisions of the Not-for-Profit Corporation Law. Please call us for a copy of the Certificate of Incorporation and By-Laws of Community Funds.

CREATING A FUND IN OUR LONG ISLAND OR WESTCHESTER DIVISION

Because the Long Island Community Foundation and the Westchester Community Foundation are divisions of Community Funds, donors have the same options described above.

financial statements

Consolidated Statements of Financial Position

December 31,	2006	2005
ASSETS		
Cash and cash equivalents	\$ 31,748,269	12,037,184
Investments (note 3)	2,004,840,225	1,879,529,145
Receivables	2,047,459	1,310,068
Prepaid expenses (note 4)	2,834,740	3,236,870
Fixed assets, net	1,328,045	1,491,107
Total assets	\$ 2,042,798,738	1,897,604,374
LIABILITIES AND NET ASSETS		
Liabilities:		
Accounts payable and other liabilities (note 4)	\$ 2,226,015	1,748,137
Grants payable	106,710,770	29,295,054
Total liabilities	108,936,785	31,043,191
Net assets:		
Unrestricted:		
Endowment	1,878,198,598	1,812,123,974
Available for grants	46,981,816	41,710,376
Available for administration	7,727,589	6,236,806
Total net assets – unrestricted	1,932,908,003	1,860,071,156
Temporarily restricted:		
September 11th Fund	953,950	6,490,027
Total net assets	1,933,861,953	1,866,561,183
Total liabilities and net assets	\$ 2,042,798,738	1,897,604,374

See accompanying notes to consolidated financial statements.

Consolidated Statements of Activities

Years ended December 31,	2006	2005
CHANGES IN UNRESTRICTED NET ASSETS:		
Revenues:		
Contributions	\$ 88,588,294	126,518,677
Investment return	234,257,982	117,927,134
Less:		
Investment expenses	(10,709,310)	(9,326,123)
Provision for unrelated business income taxes	(1,565,365)	(1,340,661)
	<u>221,983,307</u>	<u>107,260,350</u>
Other	21,500	86,500
Net assets released from restrictions	<u>6,091,665</u>	<u>6,336,373</u>
Total unrestricted revenues	<u>316,684,766</u>	<u>240,201,900</u>
Expenses:		
Grants and services to beneficiaries	157,444,070	136,970,963
Principal distribution from terminated fund	67,914,000	—
September 11th Fund grants	7,551,087	6,336,373
Grantmaking expenses	3,870,597	3,271,722
Administrative expenses	5,193,719	4,892,140
Development expenses	<u>1,874,446</u>	<u>1,515,014</u>
Total expenses	<u>243,847,919</u>	<u>152,986,212</u>
Increase in unrestricted net assets	<u>72,836,847</u>	<u>87,215,688</u>
CHANGES IN TEMPORARILY RESTRICTED NET ASSETS:		
Contributions	463,632	8,760
Interest and dividends	91,956	36,707
Net assets released from restrictions	<u>(6,091,665)</u>	<u>(6,336,373)</u>
Decrease in temporarily restricted net assets	<u>(5,536,077)</u>	<u>(6,290,906)</u>
Increase in net assets	67,300,770	80,924,782
Net assets at beginning of year	<u>1,866,561,183</u>	<u>1,785,636,401</u>
Net assets at end of year	<u>\$ 1,933,861,953</u>	<u>1,866,561,183</u>

See accompanying notes to consolidated financial statements.

Consolidated Statements of Cash Flows

Years ended December 31,	2006	2005
CASH FLOWS FROM OPERATING ACTIVITIES:		
Increase in net assets	\$ 67,300,770	80,924,782
Adjustments to reconcile increase in net assets to net cash (used in) provided by operating activities:		
Depreciation expense	312,905	317,720
Net appreciation in fair value of investments	(162,239,671)	(62,242,294)
(Gain) loss on disposal of fixed assets	(5,402)	2,949
Amortization of landlord credits	(123,428)	(123,428)
Increase in receivables	(737,391)	(419,148)
Decrease in prepaid expenses	402,130	366,763
Increase in accounts payable and other liabilities	477,878	253,818
Increase in grants payable	77,415,716	5,608,234
Net cash (used in) provided by operating activities	(17,196,493)	24,689,396
CASH FLOWS FROM INVESTING ACTIVITIES:		
Purchases of investments	(550,686,776)	(664,636,728)
Proceeds from sales of investments	587,615,367	637,362,405
Capital expenditures	(21,013)	(79,544)
Net cash provided by (used in) investing activities	36,907,578	(27,353,867)
Net increase (decrease) in cash and cash equivalents	19,711,085	(2,664,471)
Cash and cash equivalents at beginning of year	12,037,184	14,701,655
Cash and cash equivalents at end of year	\$ 31,748,269	12,037,184
Supplemental disclosure of cash flow information:		
Taxes paid on unrelated business income	\$ 1,743,113	1,165,413

See accompanying notes to consolidated financial statements.

Notes to Consolidated Financial Statements

(1) Organization

The New York Community Trust and Community Funds, Inc. (including its Long Island and Westchester Divisions) are community foundations created to build permanent charitable endowments for the areas they serve. The Trust, as the consolidated foundations are hereinafter referred to, is tax-exempt under Section 501(c)(3) of the Internal Revenue Code (the Code) and has been determined not to be a private foundation under Section 509(a)(1) of the Code. The Trust administers more than 1,800 individual charitable funds, each established with an instrument of gift describing either the general or specific purposes for which grants are to be made, usually from income only, but in some cases from principal.

(2) Summary of Significant Accounting Policies

Accounting standards provide that if the governing body of an organization has the ability to remove a donor restriction, the contributions should be classified as unrestricted net assets. However, under New York State law and The Trust's governing instruments, the assets are held as endowment funds until such time (if ever) as the governing body deems it prudent and appropriate to expend some part of the principal or appreciation. Accordingly, the consolidated financial statements classify all net assets as unrestricted, except for those net assets restricted for the September 11th Fund, but segregate the portion that is held as endowment from the funds that are currently available for grants and administration.

Cash equivalents represent short-term investments with original maturities of 90 days or less, except for those short-term investments managed as part of long-term investment strategies.

Fixed assets are recorded at cost and are depreciated on a straight-line basis over the estimated life of the respective asset. Leasehold improvements are depreciated over the life of the respective improvement or the remaining term of the lease, whichever is shorter. Fixed assets are reported net of accumulated depreciation of \$821,779 in 2006 and \$514,285 in 2005.

Investment expenses include fees for bank trustees, investment managers, and custodians.

Grants and services to beneficiaries are expensed upon approval of the Distribution Committee of The New York Community Trust (NYCT) or the Board of Directors of Community Funds, Inc. (CFI), and usually paid within one year.

Accounting estimates are an integral part of the consolidated financial statements prepared by management and are based upon management's current judgments. Actual results could differ from those estimates.

Certain 2005 amounts have been reclassified to conform to the 2006 presentation.

(3) Investments

Most of The Trust's investments are in publicly traded securities or in common trust funds and commingled funds that are invested in publicly traded securities. Fair value for these investments is based on quoted market prices and published net asset values. For other investments, fair value is determined based upon information provided by the fund managers, which is reviewed for reasonableness, and other valuation techniques.

Investments consist of the following at December 31, 2006 and 2005:

	2006	2005
Mutual funds	\$ 839,703,437	802,646,183
Common trust/other commingled funds	399,101,778	336,781,188
Common stocks	382,152,568	381,090,591
Short-term investments	128,293,310	116,217,195
U.S. Government obligations	100,778,847	99,026,903
Corporate bonds	74,918,433	72,256,010
Limited partnerships	70,332,898	60,788,375
Other	9,558,954	10,722,700
	<u>\$ 2,004,840,225</u>	<u>1,879,529,145</u>

Notes to Consolidated Financial Statements

The investments of NYCT are held in individual trusts at the bank designated by the donor in the instrument of gift. Assets in CFI are invested for long-term growth of principal and income in real terms, consistent with a reasonable degree of risk. Donor-advised funds that require a high degree of liquidity are invested in cash equivalents. The breakdown is as follows:

	NYCT	CFI	2006 Total	2005 Total
U.S. large cap equities	\$ 365,363,358	225,933,658	591,297,016	597,147,337
Fixed income	228,466,703	131,280,962	359,747,665	370,396,911
International equities	192,467,653	159,275,252	351,742,905	235,220,336
Cash equivalents	55,545,236	259,083,263	314,628,499	300,296,958
U.S. mid/small cap equities	106,936,156	56,261,752	163,197,908	165,720,301
Balanced funds	22,299,966	34,306,403	56,606,369	94,568,056
Private equity	2,148,164	52,109,398	54,257,562	47,071,840
Absolute return funds	—	49,214,979	49,214,979	37,716,157
Real estate	11,023,644	25,353,539	36,377,183	28,993,712
Hedge funds	—	25,228,000	25,228,000	—
Other	1,706	2,540,433	2,542,139	2,397,537
	<u>\$ 984,252,586</u>	<u>1,020,587,639</u>	<u>2,004,840,225</u>	<u>1,879,529,145</u>

Certain of The Trust's investments in private equity and real estate involve future cash commitments. These future cash commitments amount to approximately \$40.4 million at December 31, 2006.

(4) Pension and Postretirement Medical Benefit Plans

The Trust administers a noncontributory defined benefit pension plan covering substantially all employees. Benefits are based on years of service and the employee's compensation during the five highest consecutive years during the last ten years of employment. The Trust also provides medical insurance benefits for its eligible retired employees.

In September 2006, the FASB issued SFAS No. 158, *Employers' Accounting for Defined Benefit Pension and Other Postretirement Plans*. SFAS No. 158 requires an employer to recognize the funded status of a benefit plan, measured as the difference between plan assets at fair value and the benefit obligation, on its balance sheet. The Trust will be required to adopt this standard in its December 31, 2007 financial statements. The effect of adopting this standard is expected to be minimal.

The following sets forth financial information about the plans as of December 31, 2006 and 2005:

	Pension benefits		Other benefits	
	2006	2005	2006	2005
Benefit obligation at December 31	\$ 11,699,125	11,296,678	2,871,553	2,940,153
Fair value of plan assets at December 31	13,088,571	12,164,182	—	—
Funded status	<u>\$ 1,389,446</u>	<u>867,504</u>	<u>(2,871,553)</u>	<u>(2,940,153)</u>
Prepaid (accrued) benefit costs recognized in the consolidated statements of financial position	\$ 2,834,740	3,236,870	(1,660,707)	(1,364,013)
Benefit costs	402,130	273,749	353,716	348,365
Benefits paid	268,864	218,809	57,022	56,418
Accumulated benefit obligation	8,962,697	8,420,182	—	—

Notes to Consolidated Financial Statements

The discount rates used to value the pension and other benefit plans range from 5.5% to 5.75%. The weighted average expected return on plan assets and rate of compensation increase for the calculation of the pension benefits is 8% and 4% as of December 31, 2006. The health care trend rate assumption for 2007 is 8.5% declining each year to 6.0% in 2012.

The pension plan is invested in a balanced portfolio of equity and fixed income securities. Annual projected benefit payments for the pension and other benefit plans are expected to average \$545,000 and \$121,000, through 2016, respectively.

The Trust also sponsors a defined contribution retirement plan for employees, in which contributions are based upon a specified percentage of salaries. Retirement plan expense was \$453,114 and \$429,396 in 2006 and 2005, respectively.

(5) Commitments

On March 30, 2004, The Trust entered into a lease agreement for office space expiring March 31, 2020. Future minimum rental payments are approximately \$1.2 million in 2007 through 2009, \$1.3 million in 2010 through 2011 and a total of \$11.7 million thereafter through 2020.

Rent expense for the years ended December 31, 2006 and 2005 amounted to \$1,321,171 and \$925,183, respectively.

Independent Auditors' Report

Distribution Committee of The New York Community Trust and
Board of Directors of Community Funds, Inc.:

We have audited the accompanying consolidated statements of financial position of The New York Community Trust and Community Funds, Inc. (The Trust) (including its Long Island and Westchester Divisions) as of December 31, 2006 and 2005, and the related consolidated statements of activities and cash flows for the years then ended. These consolidated financial statements are the responsibility of The Trust's management. Our responsibility is to express an opinion on these consolidated financial statements based on our audits.

We conducted our audits in accordance with auditing standards generally accepted in the United States of America. Those standards require that we plan and perform the audit to obtain reasonable assurance about whether the financial statements are free of material misstatement. An audit includes consideration of internal control over financial reporting as a basis for designing audit procedures that are appropriate in the circumstances, but not for the purpose of expressing an opinion on the effectiveness of The Trust's internal control over financial reporting. Accordingly, we express no such opinion. An audit also includes examining, on a test basis, evidence supporting the amounts and disclosures in the financial statements, assessing the accounting principles used and significant estimates made by management, as well as evaluating the overall financial statement presentation. We believe that our audits provide a reasonable basis for our opinion.

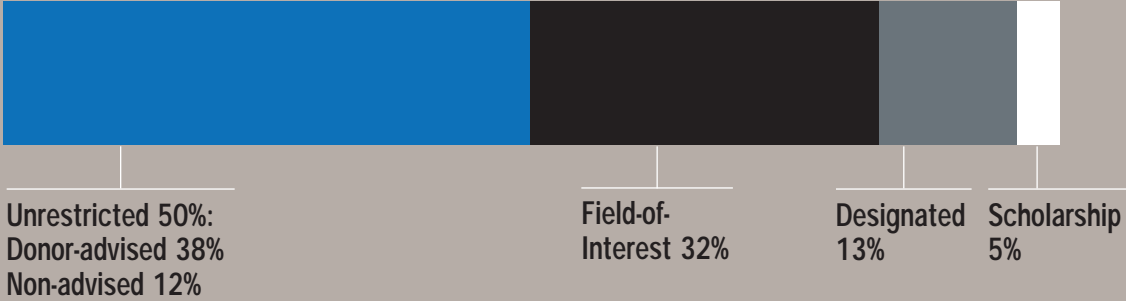
In our opinion, the consolidated financial statements referred to above present fairly, in all material respects, the financial position of The New York Community Trust and Community Funds, Inc. (including its Long Island and Westchester Divisions) as of December 31, 2006 and 2005, and the changes in their net assets and their cash flows for the years then ended in conformity with U.S. generally accepted accounting principles.

KPMG LLP

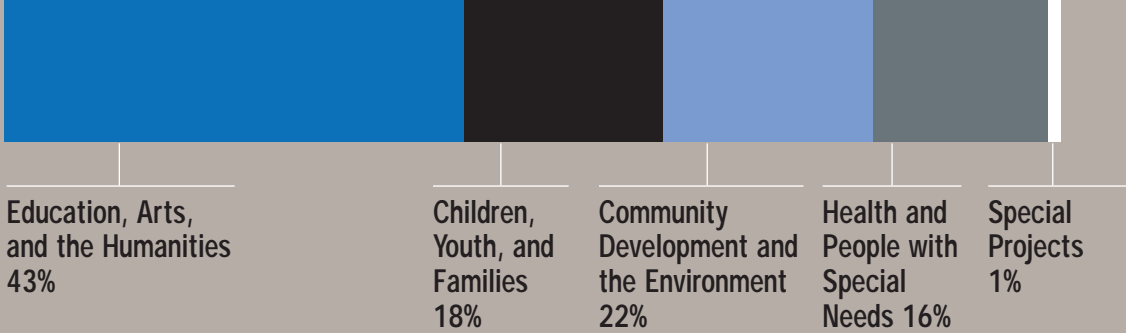
April 30, 2007

Financial Highlights

ASSETS BY FUND TYPE



GRANTS BY PROGRAM AREAS



TOTAL EXPENDITURES



Investment Committee

Bruce W. Calvert, Chairman
 Retired Chairman & CEO
 AllianceBernstein Holding, LP

Kathleen A. Corbet*
 President
 Standard & Poor's

Elizabeth B. Dater*
 Managing Director
 AG Asset Management

Donald R. Kurtz*
 Former Managing Director
 North American Equity Assets
 General Motors Investment Management Corp.

Lorie A. Slutsky
 President
 The New York Community Trust

**Consulting Member
 Affiliation for identification purposes only.*

governing body



TOP PICTURE, FROM LEFT TO RIGHT, STANDING:
ROGER JUAN MALDONADO, ANNE MOORE,
ERNEST COLLAZO, BRUCE CALVERT, SAM
POLK, DON PILLSBURY, ROBERT KAUFMAN,
LORIE SLUTSKY; SITTING: ANNE SIDAMON-
ERISTOFF, CHARLYNN GOINS, NICKI TANNER,
ANLA CHENG-KINGDON. BOTTOM PICTURE,
CONSULTING MEMBERS FROM LEFT TO RIGHT:
CARROLL WAINWRIGHT, BARBARA BLOCK,
LULU WANG, BARRY GARFINKEL, WILLIAM
EVARTS, BRUCE BALLARD

The governing body consists of 12 members who serve as the Distribution Committee of The New York Community Trust and as the Board of Directors of Community Funds, Inc. It is their responsibility to oversee our organization's operations and grantmaking.

Six members are nominated by civic authorities representing the public: one by the Mayor of the City of New York; one by the Chief Judge of the United States Court of Appeals for the Second Circuit; one by the Chairman of the New York City Partnership and Chamber of Commerce; one by the Chairman of Lincoln Center for the Performing Arts; one by the President of the Association of the Bar of the City of New York; and one by the President of the New York Academy of Medicine. The Trustees' Committee nominates five members, and the President of The Trust is a member by reason of office.

Members serve without compensation. They are selected for their judgment, integrity, and understanding of philanthropic needs. The Committee meets every two months throughout the year; subcommittees meet on a regular basis.

The Finance and Audit Committee monitors the financial operations of The Trust. The Investment Committee (see page 30) establishes asset allocation guidelines, recommends investment advisors and vehicles, and monitors investment performance. The Fund Purposes and Suggestion Review Committee assures that the provisions and intent of each donor's philanthropy are honored, and reviews grants suggested by donors to ensure that they meet our charitable guidelines.

Samuel S. Polk, Chairman
Retired Partner, Milbank, Tweed, Hadley & McCloy; Trustee: Hospital for Special Surgery, Collier Foundation, Westchester Land Trust; Former Trustee: Cooper Union for the Advancement of Science & Art, Frederick R. Koch Foundation, Mitsui Trust Co.
Nominated by the Trustees' Committee.

Robert M. Kaufman, Vice Chairman
Partner, Proskauer Rose LLP; Board Chair, Old Westbury Funds; Trustee, Brooklyn Law School; Director: Legal Momentum, Visiting Nurse Service; Chair Emeritus: Fund for Modern Courts, Times Square Alliance; Past President: Association of the Bar of the City of New York, American Judicature Society.
Nominated by the Trustees' Committee.

Bruce W. Calvert
Retired Chairman & CEO, AllianceBernstein Holding, LP; Director: AXA Financial, Operative Inc; Trustee, Michael Wolk Heart Foundation; Trustee Emeritus, Colgate University.
Nominated by the Trustees' Committee.

Anla Cheng-Kingdon
Partner, Centenium Capital; Director: Riverdale Country Day School, China Institute, Facing History and Ourselves; Member: Asian Arts Council-Metropolitan Museum of Art; Former Director, The Browning School; Former Chairman, ThinkQuest Advisory Board.
Nominated by the Chairman of the New York City Partnership.

Ernest J. Collazo
Managing Partner, Collazo Carling & Mish LLP; Director: United Hospital Fund of New York, Federal Defenders of New York; Member: Federal Bar Council, Federal Bar Council Inn of Court (Master), Advisory Committee to the Rules Committee of the Second Judicial Circuit of the U.S., Labor Advisory Council (to the Health Care Industry); New York Fellow, American Bar Foundation; Former Director: Lehman College Foundation, City Bar Fund, VIP Community Services; Former Member, Executive Committee-Association of the Bar of the City of New York.
Nominated by the Chief Judge of the U.S. Court of Appeals for the Second Circuit.

Charlynn Goins

Trustee, Brooklyn Museum of Art; Chairperson, Board of Directors of New York City Health and Hospitals Corporation; Director, AXA Financial; Member, Council on Foreign Relations; Former Senior Vice President, Prudential Securities.

Nominated by the Trustees' Committee.

Roger J. Maldonado

Partner, Balber Pickard Battistoni Maldonado & Van Der Tuin, PC; Executive Committee, Association of the Bar of the City of New York; Board Member, Association of the Bar of the City of New York Fund; Vice President, United Neighborhood Houses; Member, National Hispanic Business Group.

Nominated by the President of the Association of the Bar of the City of New York.

Anne Moore, M.D.

Professor of Clinical Medicine, Joan & Sanford I. Weill Medical College of Cornell University; Attending Physician, New York Presbyterian Hospital; Trustee, New York Academy of Medicine; Former Director, American Board of Internal Medicine; Past President, New York Metropolitan Breast Cancer Group.

Nominated by the President of the New York Academy of Medicine.

Donaldson C. Pillsbury

Executive Vice President and Worldwide General Counsel, Sotheby's; Vice-Chairman, The Chamber Music Society of Lincoln Center; Trustee, Robert College in Istanbul; Member, Council on Foreign Relations.

Nominated by the Chairman of Lincoln Center for the Performing Arts.

Anne P. Sidamon-Eristoff

Chair Emerita, American Museum of Natural History; Director: Black Rock Forest Consortium, God Bless America Fund, Greenacre Foundation, Highland Falls Public Library, Storm King Art Center; Honorary Director, World Wildlife Fund/US; Former Director, Girl Scout Council of Greater New York, Hudson River Foundation, Museum of Modern Art, Scenic Hudson.

Nominated by the Mayor of the City of New York.

Lorie A. Slutsky, Director, The New York Community Trust; President: Community Funds, Inc., The James Foundation; Director: AllianceBernstein Holding LP, AXA Financial, BoardSource, Independent Sector; Trustee Emerita: Colgate University, The New School; Former Director: The Council on Foundations (Chairman), The Foundation Center (Vice Chairman), Hispanics in Philanthropy.

Member ex officio.

Estelle (Nicki) Newman Tanner

Chair: WNYC Radio, Jewish Women's Archive; Trustee: Hebrew Union College-Jewish Institute of Religion, UJA-Federation of Jewish Philanthropies of New York; Trustee Emerita: Wellesley College, Colonial Williamsburg Foundation.

Nominated by the Trustees' Committee.

CONSULTING MEMBERS

Bruce Ballard, M.D., Clinical Associate Professor of Psychiatry, Retired Associate Dean for Student Affairs and Equal Opportunity Program, Weill Medical College of Cornell University.

Barbara H. Block, Board Member: Lincoln Center for the Performing Arts (Executive Committee), Music From Marlboro, Usdan Center for the Performing Arts, George Gustav Heye Center-National Museum of the American Indian.

William M. Evarts

Senior Counsel, Pillsbury Winthrop LLP; Former Chairman, The New York Community Trust Distribution Committee.

Charlotte Moses Fischman

Partner, Kramer Levin Naftalis & Frankel LLP.

Barry H. Garfinkel

Of Counsel, Skadden, Arps, Slate, Meagher & Flom.

Judah Gribetz

Counsel, Bingham McCutchen LLP.

Carroll L. Wainwright, Jr.

Retired Partner, Milbank, Tweed, Hadley & McCloy.

Lulu C. Wang

Chief Executive Officer, Tupelo Capital Management LLC.

suburban divisions

With the belief that grantmaking is most effective when it is done locally, The Trust established divisions that reach out to the greater metropolitan area: the Westchester Community Foundation, founded in 1975, and the Long Island Community Foundation, founded in 1978.

Each is guided by a board of advisors composed of local community leaders and staffed by people expert in grantmaking and donor service. As part of The Trust, Long Island and Westchester enjoy our investment management, legal, financial, and accounting services.

For donors who wish to contribute to charities in these communities, our suburban divisions combine sensitivity to local concerns with the economies of scale and expertise of a large organization.

Funds in each division are listed on the following two pages.

LONG ISLAND COMMUNITY FOUNDATION

Nassau Hall
1864 Muttontown Rd.
Syosset, NY 11791
516.348.0575
www.licf.org

Board of Advisors:

Raymond C. Radigan, Chairman
John D. Miller, Vice Chairman
Fred Bornstein
Lawrence E. Davidow
Roslyn D. Goldmacher
Amy Hagedorn
Robert M. Hoyte
Aldustus E. Jordan III
William T. Martin
Marge Rogatz
Betty Schlein
Pearl F. Staller
Scott A. Williams

WESTCHESTER COMMUNITY FOUNDATION

200 North Central Park Avenue
Suite 310
Hartsdale, NY 10530
914.948.5166
www.wcf-ny.org

Board of Advisors:

Raymond M. Planell, Chairman
Venetta Chambers Amory
Gustavo Arnavat
Manuel Boado
Theodore V. Buerger
Jacqueline L. Dunbar, M.D.
Denise S. Farrell
Debra Shaw Hess
Rosia Blackwell Lawrence
Judith Z. Matson
Matthew G. McCrosson
Katherine C. Moore
Ralph E. Penny
Jennifer M. Rutledge
Elaine Schroeder
Kathy Shea
Jamie Shenkman
Alan Sorkin
Sabin C. Streeter



**Long Island
Immigrant
Alliance rallies
for immigration
justice.**

LONG ISLAND FUNDS

- Dennis P. Angermaier Memorial Lifeguard Scholarship Fund (2002)
 Alexander Baldwin Memorial Scholarship Fund for Massapequa High School (2000)
 Jason & Susan Barnett Family Fund (2005)
 Jean Bellia Fund for Nursing Excellence (2004)
 Stanley & Marion Bergman Family Charitable Fund (1996)
 Willa & Robert Bernhard Fund (1997)
 Ruby & Michael Bornstein Memorial Fund (1978)
 Captain William F. Burke, Jr. Memorial Fund (2003)
 *James & Carole Burns Fund (2006)
 Capell Family Fund (2001)
 Richard M. Caproni Memorial Scholarship Fund (2001)
 Helene & Richard Cepler Family Fund (2000)
 Chakiryan Family Fund (2002)
 Arthur A. Chaplin GSB Fund (2001)
 Charity Society Fund (2000)
 Charlie's Long Island Fund (1985)
 George J. Conklin Scholarship Fund (1989)
 Ann Caroline Corrody Fund (1999)
 Cumulus Long Island Fund (2003)
 Rose D'Arpino Scholarship Fund (2005)
 Davidow Elderly Community Assistance Fund (1996)
 Domino Family Scholarship Fund (2005)
 Michael & Elizabeth Domino Family Fund (2005)
 Percy Douglass Memorial Education Fund (1985)
 Eiber Family Fund (2000)
 In Memory of Elissa Fund (2004)
 ENEE Philanthropic Fund (1994)
 Martha C. Entenmann Scholarship Fund (1999)
 Farmer's Daughter Charitable Fund (2005)
 Tiffani Bea Feldman Children's Fund (2000)
 Susan, Karen & Diane Lash Ferber Charitable Fund (1996)
 Mark Fischgrund Memorial Fund (2003)
 Walter & Sandra Fish Charitable Fund (1997)
 Forman Fund (2002)
 Samuel Francis Fund (2005)
 Franck Family Fund (2005)
 Anne & Frank Freeman Fund (1997)
 Fund for the Future of Long Island Women & Girls (1997)
 Fund for Innovative Community Programs on Long Island (1985)
 Funders Collaborative for Early Care & Education on Long Island (2002)
 Richard H. & Jean E. Gaebler Family Fund (2005)
 Glenn Gerrato Scholarship Fund (2001)
 Jerry & Franette Gil Family Fund (1999)
 Neil Giske Memorial Scholarship Fund (1985)
 Jeanne Going Memorial Fund for Ovarian Cancer Research (2005)
 *Selma Goldmacher Charitable fund (2006)
 Selma Greenberg Fund (1997)
 Greentree Foundation Fund (2003)
 Grundman Memorial Scholarship Fund (1990)
 Horace & Amy Hagedorn Long Island Fund (1996)
 Horace Hagedorn Memorial Fund (2005)
 Kristy Lyn Haley Memorial Fund (2000)
 Hand & the Spirit Fund (1999)
 F. & M. Harris Family Fund (2001)
 Robert E. & Barbara W. Harrison Fund (1997)
 Helen's Fund (1998)
 E.B. Hubbard Fund (2002)
 Julie Hunnewell Fund (1987)
 Alma D. Hunt/VCM L.I. Fund (1997)
 Idie Fund (2000)
 Susan Isaacs & Elkan Abramowitz Charitable Fund (2005)
 Douglas Jackson Memorial Scholarship Fund (1996)
 Berenice & Herman Jacobs Family Fund (1997)
 Marie J. Jensen Scholarship Fund (2005)
 Lucille S. & Martin E. Kantor Fund (1993)
 Edith R. Karel Fund (1998)
 Karish Education Fund of the Horticultural Alliance of the Hamptons (2000)
 David & Dale Karp Family Charitable Fund (2003)
 Kenneth L. & Veronica K. Katz Fund (1999)
 Kenneth L. & Veronica K. Katz Advisory Fund (1999)
 Leo & Freda Keller Memorial Fund (2000)
 Kids Making a Difference Fund (2000)
 Morton L. Kimmelman Fund (2001)
 Kingfisher Fund (1998)
 David & Paula Kirsch Family Fund (2004)
 Andrea B. & Peter D. Klein Fund (1999)
 Beverly & Harvey Klein Fund (2001)
 Krasnoff Family Fund (1985)
 Patricia Kucinski Memorial Fund (2003)
 Arthur H. Kunz Memorial Fund (2005)
 Ed & Lee Lawrence Fund (1988)
 Donna Levien Memorial Fund (2004)
 Levin Family Fund (1997)

J & E Levy Fund (1996)
 *Robert & Phoebe Lewis Family Fund (2006)
 LICF Operating Fund (1989)
 LITAC Fund (1989)
 Marian & William Littleford Fund (1993)
 Debra Lobel/Beverly Dash Fund (2004)
 Long Island Fund for the Arts (1984)
 Long Island Fund for Education (1987)
 Long Island Fund for Youth Programs (1987)
 Long Island Nonprofit Crisis Fund (2003)
 Long Island Unitarian Universalist Fund (1992)
 John F. Loverro Memorial Fund (2004)
 Roselle Patricia Luciano Literacy Fund for Women (1996)
 Kendall Madison Leadership Fund (1995)
 *Mallouk Family Fund (2006)
 Mancino Family Fund (2003)
 William T. & Lynn Steppacher Martin Fund (2001)
 Massapequa Community Fund (2001)
 Michael & Paula Maturo Family Fund (2005)
 Helen P. McIntyre Fund (1986)
 Helen P. & Randall P. McIntyre Fund (1998)
 Alan P. Mendelsohn Memorial Scholarship Fund (1999)
 Shelley Metzzenbaum & Steven Kelman Family Fund (1999)
 Byron T. Miller Memorial Fund (1992)
 John D. Miller Fund (2001)
 Millie Fund (2000)
 William E. Mintzer Memorial Fund (1999)
 Miracle-Gro Fund (2001)
 Joseph & Marion L. Mitola Family Fund (1999)
 Alan Morton Foundation Fund (1998)
 Michael Moverman Memorial Fund (1998)
 Nash Fund (1996)
 Nassau County Red Cross Fund (1998)
 Nassau/Suffolk Fordham Law Alumni Scholarship Fund (1991)
 NCJW South Shore Section Community Fund (1995)
 North Country Community Association Fund (2002)
 North Fork Fund (2003)
 Northrop Grumman Endowment Fund for L.I. Women & Girls (1996)
 Diane J. Owen Memorial Fund (2005)
 Sylvia & Morris Paley Fund (2002)
 Paul's Fund (2002)
 Henry D. Pearson, Jr. Memorial Fund (1992)
 Peconic Stewardship Fund (1984)
 Perry Persichilli Memorial Fund (1996)
 James & Margaret Philbin Scholarship Fund (2003)
 Harriet B. & Edward Everett Post Fund (1986)
 Elizabeth Pritzker Endowment Fund (1985)
 Raymond C. & Diane F. Radigan Fund (2005)
 Rhodebeck Long Island Fund (1998)
 Richards Family Fund (1987)
 Charlotte S. & Richard D. Rockwell Fund (1999)
 Rose Fund (1998)
 Judith Rubertone Fund (1987)
 Cheryl & Stephen Rush Fund (1999)
 Saltzman Fund (1987)
 Arnold Saltzman Family Charitable Fund (2001)
 Joan & Arnold Saltzman Fund (1989)
 *Sarah Fund (2006)
 Sidney Schiffman Fund (1996)
 Betty & Richard Schlein Fund (1997)
 Schneidman Family Fund (2000)
 Caroline & Sigmund Schott Fund (1999)
 John S. Schrader Memorial Fund (2004)
 Schwartz Family Fund (1991)
 Selig Fund (1991)
 Samuel & Stella Seligsohn Fund (1996)
 Jerry & Cecile Shore Fund (1995)
 Meredyth H. Smith Charitable Fund (1997)
 Colonel William Smith Foundation (1984)
 E. & R. Smits Fund (2001)
 Song of Songs Fund (2002)
 Staller Scholarship Fund (1987)
 Erwin P. & Pearl F. Staller Charitable Fund (1992)
 Adam E. Stark Memorial Scholarship Fund (2001)
 Nancy Steinman Fund (2003)
 Helen, Emily & Margaret Stevens Fund (2004)
 Sunida Fund (1998)
 Carol & Jim Swiggett Fund (1997)
 Taca Family Fund (1996)
 Ruth Saltzman Taishoff Fund (1996)
 Gail Talent Memorial Fund (2003)
 Stuart & Jill Tane Charitable Fund (1997)
 James & Marie Taormina Fund (1999)
 Tealison Fund (1998)
 Tealison Two Fund (2001)
 United Way of Long Island's Human Care Fund (1992)
 Joseph Vigilante Fund for the Adelphi School of Social Work (2000)
 Phyllis S. Vineyard Fund (1996)
 Vishnick Family Charitable Fund (2001)
 Voices from the Heart Fund (1997)
 Amah Vought Memorial Health Fund (2005)
 WAC Lighting Fund (2004)
 Elizabeth & Eugene Wadsworth Charitable Fund (1999)
 Hilda S. Weiser Memorial Fund (1998)
 Charles J. Williams Fund (1986)
 Work Long Island (2003)
 *Yang Family Fund (2006)

WESTCHESTER FUNDS

Apoyo Fund (2002)
 Ardee Fund (1994)
 Arfa Family Fund (1997)
 Ascher Fund (1999)
 Linda Ashear Fund (2001)
 Barringer-Spaeth Fund for Change (2002)
 Joan Bartels Memorial Fund (1997)
 Beverly Bender Fund (2000)
 Helen Benedict Fund (2000)
 Howard & Grace Benedikt Fund (2002)
 Carol Berger Scholarship Fund (2005)
 Richard A. Berman Fund (2004)
 K. M. Bialo Family Fund (1986)
 Bianco Family Fund (2003)
 Blecher Family Fund (1986)
 Albertina Bloom Memorial Fund (1985)
 Samuel & Beatrice Marks Bloom Memorial Fund (1998)
 Blumer Family Fund (1998)
 Jack Brennan Fund (2002)
 Buerger Fund (2001)
 Elizabeth G. Butler Angel's Fund (2005)
 Tony Carlucci Scholarship Fund (1999)
 Jesse L. Carroll, Jr. & Judith B. Carroll Fund (1986)
 H. M. & T. Cohn Fund (1977)
 Larry Cole Memorial Fund (2003)
 *Colson Fund (2006)
 Michael A. Correa Memorial Fund (2002)
 Nancy & Robert DeLigter Boy Scout Memorial Fund (1991)
 Michele & Concetta DeRosa Fund (2000)
 Alyson & Parker Drew Fund (2000)
 Linda A. & James H. Ellis Fund (1999)
 Marion C. & James E. Enright Scholarship Fund (2005)
 Ernie, Louise & Jeffrey Early Childhood Fund (1995)
 Esplanade Fund (2003)
 Falk Family Fund (1986)

*Francis & Denise Farrell Family Fund (2006)
 Celia Malbin Feinstein Fund (1992)
 Arnold E. & Olga C. Feldman Fund (2003)
 Virginia Franklin Journalism Scholarship Fund (2004)
 Peggy Friedman Memorial Fund (1989)
 Fund for Westchester's Environment (2001)
 Fund for Westchester's Future (1987)
 Gallagher Family Charitable Fund (1999)
 Charles Gamper Fund (1985)
 J.F. & M. Gelband Fund (1995)
 Bella & Reuben Gilbert Fund (1992)
 Lloyd & Lonya Gilbert Fund (1991)
 Glassberg Family Fund (1997)
 Rachel Greenstein Memorial Fund (1988)
 Carol & Frank Headley Family Fund (1996)
 Jeanne & Lee Heffner Fund (2000)
 John & Marilyn Heimerdinger Fund (1994)
 Russell Hexter Filmmaker Fund (1997)
 Julian H. Hyman Memorial Fund (1985)
 Alice & Warren Ilchman Fund (2000)
 IZARD Fund (1997)
 Jade Fund (1999)
 Paul & Barbara Jenkel Fund (1998)
 Edwin Irving Johnson Scholarship Fund (1985)
 Janet A. Johnson Scholarship Fund (2003)
 Margaret Jourdan Fund (2005)
 Kadejay Fund (1998)
 Kimerling Career Development Fund (2000)
 Stephanie H. & Robert A. King Fund (1994)
 Learning Center Fund (1994)
 Dorothy & John Lebor Fund (1999)
 James L. Leinward Fund (1998)
 David F. & Dorothy W. Linowes Fund (1999)
 Linville Fund (1993)
 William J. & Helen Z. Lippincott Fund (1994)
 James M. Lober & Lois B. Lober Fund (1998)
 *John A. Lombardi Scholarship Fund (2006)
 Karin Lopp Fund (1998)
 Elizabeth Lorentz Fund (1986)
 Lester & Helen Levinthal Lyons Fund (1994)
 John F. Maloney Memorial Fund (1998)
 Patrick J. McNeill Scholarship Fund (1997)
 Menzies Fund (2002)
 *Merrill Lynch Fund for Children with Disabilities in
 Memory of Christopher Herndon (2006)
 Middleton Family Fund (2001)
 Asa Uyeda Mitsudo & Sumi Lynn Koide Memorial Fund (1996)
 Katherine C. & David E. Moore Fund for Community
 Development (2005)
 David & Katherine Moore Family Foundation Fund (2000)
 Nathan Moscow Fund (1985)
 Munson Family Fund (2000)
 David & Rhoda Narins Family Fund (1999)
 Eda & Stanley Newhouse Fund (1983)
 James L. Newhouse Fund (1986)
 Thomas J. & Margaret Lynch O'Connor Scholarship Fund
 (1994)
 Olmezer Westchester Fund (1998)
 Pammy Fund (1989)
 Passionist Fund (1995)
 Lawrence R. Jr. & Thelma Dale Perkins Fund (For Minority
 Education) (1993)
 Perry Family Fund (1988)
 Roger Perry Memorial Fund (1999)
 Roger & Isobel Perry Memorial Fund (2000)
 Pisacano Family Fund (1995)
 *Raymond M. & Alice M. Planell Fund (2006)
 Pottinger Fund (1994)



This Mount
 Vernon family got
 financial aid and
 counseling from
 the Bridge Fund
 of Westchester
 after they fell
 behind on their
 rent when
 Westchester bus
 drivers went on
 strike and they
 had to take cabs
 to get to work
 and to the doctor.

Sal J. Prezioso Fund for Westchester's Future (2001)
 Putnam Fund (1999)
 Muriel L. & Stephen B. Randolph Fund (2004)
 George E. & Elizabeth A. Reed Fund (2001)
 Reiman Brothers Fund (1999)
 Elsie Reinhart Memorial Fund (1991)
 *Walter Ronan Caddy Scholarship Fund (2006)
 Nathan Rosen Memorial Fund (1996)
 Vito & Diana Russo Fund (1988)
 Elaine & Edmund Schroeder Fund (2002)
 Dr. Lester J. Schultz Memorial Fund (1984)
 Robert & Lynne Schwartz Fund (1986)
 Shea Family Fund (2004)
 Dorothy F. & William B. Shore Fund (2000)
 Carl Slater Memorial Fund (1998)
 Bradford & Pamela Smith Charitable Fund (2000)
 *Michelle Sobel Literacy Fund (2006)
 Karena Somerville AWC Scholarship Fund (1992)
 Dr. John B. Sommi Fund (2003)
 *Stepinac Fiftieth Reunion Scholarship Fund (2006)
 Andrew Stewart Memorial Fund (1999)
 Edward Storck Memorial Scholarship Fund (1996)
 Sturmer Family Fund (1996)
 Sullivan Family Fund (1994)
 *Kalyan Sundaram Fund (2006)
 James A. & Katherine D. Sutton Fund (1999)
 Martin Tackel & Abbe Raven Family Fund (1998)
 Alfonso Tapia & A. L. Rose Memorial Fund (1994)
 Technical Support Fund (1998)
 Threerandomwords Fund (2003)
 Jodie Torigian Charitable Fund (2000)
 *Trabout Fund (2006)
 Triantafillu Fund (1983)
 W. Lee Tuller Memorial Fund (1983)
 W. Lee Tuller Memorial Education Fund (1983)
 Arno & Peppi Ucko Family Fund (1998)
 Emily & Harold E. Valentine & Evelyn Gable Clark
 Scholarship Fund (2005)
 Wallace Westchester Fund (1988)
 Bernice & Irwin Warshaw Fund (1990)
 Nicholas C. Wasicko Scholarship Fund (1993)
 Westchester Community Foundation (1975)
 Westchester Fund for Women & Girls (1992)
 Westchester Health Fund (2003)
 Westchester Opportunity Fund (1993)
 Westchester Poetry Fund (2000)
 Westchester Wilderness Walk Fund (2001)
 Frank E. Wigg Charitable Fund (1993)
 Wilstock Fund (1994)
 Evelyn G. Zamboni Fund (1986)
 Madeline & Sanford S. Zevon Fund (1995)

trustee banks

In 1923, the banks of New York City envisioned the type of philanthropic organization that could best meet the changing needs of this community.

It would be set up to give wealthy people and those of moderate means an equal opportunity to accomplish their philanthropy within a flexible framework. The charitable funds they created would be permanently secure. The organization's governing body—an impartial and changing committee of New York citizens chosen for their understanding of philanthropic needs—would oversee the selection of charitable beneficiaries.

This was the beginning of The New York Community Trust. Today thirteen banks and trust companies have adopted the “Resolution and Declaration of Trust Creating *The New York Community Trust*.” The representatives of these financial institutions constitute the Trustees’ Committee, and each bank is authorized to receive funds in trust for The New York Community Trust.

Bank of America

Brian T. Moynihan, President, Wealth & Investment Management
Alternate: Rena M. Desisto, Regional Marketing Development Executive
Alternate: Walter J. Dillingham, Jr., Director, Philanthropic Management

The Bank of New York

Thomas A. Renyi, Chairman & CEO
Alternate: John Dowd, Senior Vice President & Chief Trust Officer

Bessemer Trust Company, N.A.

John A. Hilton, Jr., President & CEO
Alternate: William H. Forsyth, Jr., Director & Senior Fiduciary Counsel
Alternate: Karen Putnam, Principal & Director of Philanthropic Advisory Services

Brown Brothers Harriman Trust Company LLC

Donald B. Murphy, Chairman & CEO
Alternate: William H. Mears, Jr., Executive Vice President

Citigroup Inc.

Charles Prince, Chairman
Alternate: Daniel M. FitzPatrick, Managing Director & CEO Citigroup Trust

Deutsche Bank Americas

Seth Waugh, Chief Executive Officer
Alternate: Susan J. Hartley, Managing Director & Head, Trust and Estate Services, Deutsche Bank Trust Company of New York

Fiduciary Trust Company International

Henry P. Johnson, President & Co-CEO
James Goodfellow, Chairman & Co-CEO
Alternate: Gail E. Cohen, Esq., Executive Vice President & Chief Trust Counsel

HSBC Bank USA

Paul J. Lawrence, President & CEO
Alternate: Gerard F. Joyce, Jr., Senior Vice President, Head of US Personal Trust

JPMorgan Chase Bank

Jamie Dimon, Chief Executive Officer
Alternate: Paula M. Baker, Managing Director

Merrill Lynch Trust Company, FSB

Christian G. Heilmann, Managing Director, Chairman & CEO
Alternate: David Ratcliffe, Senior Vice President

Lehman Brothers Trust Company, N.A.

Robert J. Laughlin, President
Alternate: Joseph F. Collins, III, Senior Vice President

The Rockefeller Trust Company

Elizabeth P. Munson, President
Alternate: James M. Mulvaney, Senior Vice President

United States Trust Corporation

Alternate: Linda Franciscovich, Head of Philanthropic Advisory Services

staff of the trust

T: 212-686-0010 F: 212-532-8528
www.nycommunitytrust.org

Office of the President	Ext.
Lorie A. Slutsky, <i>President</i>	257
Elba Linares Griffin, <i>Assistant to President</i>	235
Nasiba Adilova, <i>Executive Assistant</i>	236
Ani F. Hurwitz, <i>Director of Communications</i>	224
Becky Ellis, <i>Communications Associate</i>	234

Office of the General Counsel	
Jane L. Wilton, <i>General Counsel</i>	379
Kathleen Wecht, <i>Executive Assistant</i>	322

Donor Relations	
Robert V. Edgar, <i>Vice President</i>	373
Allyson Gillette, <i>Administrative Assistant</i>	353
Gay Young, <i>Director</i>	377
Janet Hollander, <i>Grants Investigator</i>	535
Anne M. Nally, <i>Grants Administrator</i>	301

Finance & Investment	
Kit Conroy, <i>Chief Financial Officer</i>	424
Mary Z. Greenebaum, <i>Chief Investment Officer</i>	464
Jannette Andaluz, <i>Financial Assistant</i>	429
Heidi Hotzler, <i>Controller</i>	444
Yahaira Ortiz-Gutierrez, <i>Accountant</i>	463
Lora Rhames-Davis, <i>Accountant</i>	476
Jacqueline Sacks, <i>Manager, Trust Accounting</i>	411
Raymond P. Salibur, <i>Investment Administrator</i>	455
Wen Weng, <i>Manager, Budgets & Special Projects</i>	499

Administration	
Mercedes M. Leon, <i>Vice President</i>	265
Tonia Brewer, <i>Records Assistant</i>	636
Marc D'Alessandro, <i>IT Administrator</i>	340
Catherine Johnson, <i>Administrative Assistant</i>	276
Joan Reedy, <i>Benefits Administrator</i>	256
Ayanna Russell, <i>Office Manager</i>	227
Evelyn Shapero, <i>Receptionist</i>	0
Tilackdharry Shievkumar, <i>Office Assistant</i>	667

Grants and Special Projects	
Joyce M. Bove, <i>Senior Vice President</i>	552
Judith Lopez, <i>Executive Assistant</i>	554
Liza Lagunoff, <i>Grants Administrator</i>	559

Children, Youth & Families	
Roderick V. Jenkins, <i>Program Officer</i>	527
Patricia A. White, <i>Senior Program Officer</i>	579

Community Development & the Environment	
Patricia Jenny, <i>Program Director</i>	201
Patricia Swann, <i>Program Officer</i>	530
Jasmine Thomas, <i>Program Officer</i>	575

Education, Arts & the Humanities	
Leah M. Krauss, <i>Senior Program Officer</i>	520
Jane R. Stern, <i>Program Director</i>	557

Health & People with Special Needs	
Irfan Hasan, <i>Program Officer</i>	573
Len McNally, <i>Program Director</i>	556

Nancy DeKoven, <i>Administrative Assistant</i>	525
Sheila Dinkins, <i>Administrative Assistant</i>	553
Laurette Gresler, <i>Executive Assistant</i>	555

DIVISIONS

Long Island Community Foundation	
T: 516.348.0575 F: 516.348.0570	
Suzu D. Sonenberg, <i>Executive</i>	223
For a complete staff list, please visit www.licf.org .	

Westchester Community Foundation	
T: 914.948.5166 F: 914.948.5197	
Catherine Marsh, <i>Executive</i>	23
For a complete staff list, please visit www.wcf-ny.org .	

funds in 2006

A

Janice E. Abbott Scholarship Fund (1999)
Abdalla Stern Fund (2003)
Jane Schwab Abel & Elise Schwab Clemenger Memorial (1946)
*Abrams Family Fund (2006)
A.B.Y. Fund (1960)
Ackman Family Fund (1997)
Acorn Foundation Fund for Beautification in Memory of
Barbara Foster Vietor (2004)
Acorn Foundation Fund for History in Memory of
Alexander Orr Vietor (2004)
Hall Adams Fund (1972)
John & Laurie Adams Fund (2004)
Adel & Leffler Families' Fund for Queens (1993)
Frederica M. & Morton L. Adler Trust (1941)
Adopt-a-Monument Fund (1987)
M. Bernard Aidinoff Fund (1986)
M. Bernard Aidinoff & Elsie V. Aidinoff Fund (1998)
Seth G. Aidinoff Fund (1986)
Akabas Family Fund (1986)
Albin Family Arts Fund (1999)
Barbara Albisser Memorial Fund (1981)
Oakey L. & Ethel Witherspoon Alexander Fund (1977)
Alexandra Fund (1970)
Allegra-Tanner Fund (1995)
Robert Mack Allen & Wendel Fentress Ott Fund (1989)
Allen Rosenshine Minority Education & Training Fund (2000)
AllianceBernstein Foundation Fund (1998)
Franz & Marcia Allina Fund (1994)
Alouette Fund (1993)
B. Altman Fund (1985)
Altschul Family Fund (1980)
Altschul Overbrook Fund (1994)
Arthur Altschul Memorial Fund (2002)
Arthur G. Altschul, Jr. Charitable Fund (1996)
Emily H. Altschul Charitable Fund (2002)
Elizabeth & Peter Altwater Fund (1974)
American Seamen's Friend Society Designated Fund (1986)
American Seamen's Friend Society Discretionary Fund (1986)
Ananouri Fund (1998)
*Anne Anastasi & John Porter Foley, Jr. Funds (2006)
Anbinder Family Charitable Fund (2003)
J. R. Anderson Fund (1981)
Patricia Anderson Fund (2005)
*Matthew & Krista Annenberg Fund (2006)
*Anonymous Fund (2006)
Anonymous (2003)
Eileen & William Araskog Charitable Fund (2001)
Arc of Circumstance Fund (1978)

G.W. Archer Fund (2001)
Joseph Arena Charitable Fund (1995)
Walter & Marsha Arnheim Fund (1986)
Esther Jean Arnhold Fund (1966)
Arundel Fund (1988)
Marcia Ashman Fund for Children (1999)
Robert R. Asiel Memorial Funds (1972)
Astor Fund for Public School Libraries (1997)
Auburn Citizen Fund (1999)

B

B Fund (1990)
Babbitt Family Fund (1990)
Babsan Fund (1992)
William M. Backer Fund (1985)
Backman-Niesz Fund (1999)
Isabelle Bacon Fund (1985)
Baer Family Fund (1989)
Ellen & Henry Baer Fund (1986)
Honorable & Mrs. Harold Baer Fund (1989)
Lee Bailey Fund (1991)
S. Prentiss Bailey Fund (1960)
Baird Family Fund (1987)
Baker Family Fund (2003)
Allyson Maya Collazo Baker Fund (1984)
Fern Ann Ballard Memorial Fund (1986)
Dr. Holly M. Bannister & Douglas L. Newhouse Fund (1984)
Peleg S. Barber Fund (1960)
Ruth Plofsky Barish & Irving Barish Fund (1996)
Barns Fund (1971)
Parker W. Barnum Fund (1979)
William & Françoise Barstow Foundation No. 1 (1931)
William & Françoise Barstow Foundation No. 2 (1959)
Christopher S. Bartels Fund (1998)
Katherine N. Bartels Fund (1998)
McDonald C. Bartels Fund (1998)
Todd C. Bartels Fund (1998)
Harriett M. Bartlett Funds (1987)
*Arlene Bartlow Fund (2006)
Arthur L. Baruch & Rosalie K. Baruch Fund (1979)
Baudo-Sillerman Scholarship Fund (1989)
Alice D. Beal Trust (1955)
Raymond R. Beatty Scholarship in Memory of Andrew
Wilson (1984)
Hubert Park Beck Literacy Fund (2004)
Bernadine Becker Commemorative Trust (1984)
Ruth Bedford Fund (1963)
Beech Fund (1975)
David Bell Fund (1998)

Bellevue Nursing Committee Fund (1976)
 Eleanor Robson Belmont Fund (1980)
 Selim & Luna Benardete Charitable Fund (2005)
 Lillian Z. Bender Fund (2002)
 Claire B. & Lawrence A. Benenson Fund (1987)
 Herbert & Edythe F. Benjamin Fund (1976)
 *Benner Family Fund (2006)
 Bento Fund (2004)
 Maureen Duffy Benziger Fund (2005)
 Andrew N. & Gail D. Berg Fund (1999)
 Alexander Berger Memorial Fund (2004)
 Edward Bergman Fund (2005)
 Paul Bergman Fund (2005)
 Sarah & Paul Bergman Youth Empowerment Fund (2005)
 Daniel Bergstein Memorial Scholarship Fund (2002)
 Berkshire Fund (2000)
 Viola W. Bernard Fund for Psychosocial Health (1993)
 T. Roland Berner Fund (1972)
 Charles L. Bernheimer Fund (1974)
 Theresa E. Bernholz Fund (1924)
 Sylvia Bernstein Fund (1994)
 Richard Case Berresford Fund (1997)
 William H. Berri Funds (1966)
 Frank Besau & Pauline Besau Wamsganz Fund (1995)
 Betlor Foundation (1978)
 Beverly Hills Fund (1972)
 BGM Fund (1971)
 June R. & Jonathan Bingham Fund (1980)
 Henry Birnbaum Fund (2000)
 Gladys A. Bishop Memorial Fund (1987)
 Anne & Walter C. Bladstrom Philanthropic Fund (1988)
 Richard & Margaret Blanchard Fund (1983)
 Nancy & Robert S. Blank Fund (2003)
 E.H.R. & N.M. Blitzer Fund (1984)
 Blitzer Family Fund (2005)
 Amy Bloch/Gregory Horowitz Fund (2005)
 Lida & David Bloom Fund (1989)
 Robin Bloom Fund (1991)
 *Dr. Dennis & Elaine Bloomfield Fund (2006)
 Blum Family Fund (1990)
 *Paul & Lauren Blum Fund (2006)
 Sidney & Elaine Blumenthal Fund (1980)
 Jesse Smith Blydenburgh & Josephine Vail Blydenburgh
 Fund (1958)
 Ernst P. Boas Memorial Fund (1955)
 Alice Boerner Fund (1988)
 Bohemia Fund (1971)
 Bolin Fund (1986)
 Peter A. Bonanni Scholarship Fund (1996)
 M. Alida Bonyng Memorial Fund (1940)
 Lillian G. Booth Fund (1976)
 Janet & James Bostany Memorial Fund (1999)
 Charles Bouman Charitable Trust (1977)
 Bove Fund (1986)
 John Perry Bowditch Memorial Fund (1956)
 Clothilde de Veze Bower Fund (1989)
 Philip & Suzanne Bowers Charitable Contribution Fund (2003)
 *Blair A. & Elizabeth J. Boyer Family Fund (2006)
 George T. & Francele Boyer Fund (1976)
 *Boyle Family Charitable Fund (2006)
 Bradford Fund (1986)
 William B. & Jane Eisner Bram Fund (1995)
 William M. Bramwell, Jr. Fund (1995)
 Brause Fund (1986)
 Barry & Geraldine Brause Fund (1986)
 R. S. Brause Fund (1986)
 Roberta Brause Fund (1986)
 Catherine & Robert Brawer Fund (1996)
 Annie Grant Breath Memorial Fund (1939)
 Lyn Brillo & Mark Sonnino Fund (1997)
 Brivio Family Fund (2003)
 Beatrice & Douglas Broadwater Fund (1986)
 Edward Brodsky Fund (1997)
 Ann Loeb Bronfman Fund (1995)
 *Brooke Katherine Devine Fund (2006)
 Brooklyn Fireman's Medal Fund (1981)
 *J. F. & S.S. Brown Family Fund (2006)
 Dee & Dickson G. Brown Fund (1986)
 Meredith & Sylvia Brown Fund (2004)
 Adon H. Brownell Memorial Fund (1985)
 Browning Fund (1998)
 Edward W. Browning Fund No. 2 (1969)
 Brownstein Family Fund (1995)
 Betty E. Brugger Fund (1986)
 William H. & George R. Brunjes Memorial Fund (1988)
 Barry R. Bryan Fund (1986)
 May Evans Bryant Fund (1989)
 BTW Fund (1973)
 Emily G. Buck Fund (1994)
 *Bucks Harbor Fund (2006)
 *Bucky Fund (2006)
 Alexandru & Sonia Bunesco Fund (1993)
 Walter & Martha Burchard Family Fund (1988)
 Richard A. Burgheim Fund (1999)
 Burkhart Fund (2004)
 Frantzes D. Burkhart Fund (2004)
 William H. Burkhart Fund (2004)
 Burks Family Fund (2003)
 Burnett Family Fund (2004)
 John U. & Minnie M. Burt Inter Vivos Fund (1974)
 John U. & Minnie M. Burt Testamentary Funds (1974)
 Ernest Brooks Burton Fund (2003)
 William B. Butz Memorial Fund (1999)
 Patrolman Edward R. Byrne Substance Abuse Fund (1988)
 Monsignor Harry J. Byrne Scholarship Fund (1998)

C
 Jean C. Caldwell Fund (1950)
 Patricia A. Caldwell Fund (2002)
 Douglas Campbell, Jr. Fund (1984)
 Frances T. Campbell Fund (1959)
 Cannon Educational Fund (1981)
 Cantor Family Fund (2005)
 Ralph & Stella Caporale Fund (1995)
 Carey Family Fund (1995)
 Carillon Fund (1998)
 Carlson Fund (1994)
 Carnegie Corporation Fund No. 1 (1936)
 Carnegie Corporation Fund No. 2 (1936)
 Carolina Fund (1986)
 Alys Sinclair Carreau Memorial Fund (1929)
 Carson Family Charitable Trust Fund (1985)
 Sybil Carter Memorial (1930)
 Cashin Family Fund (1989)
 Bonnie Cashin Fund (2002)
 Catalyst Fund (2005)
 Cecelia Trust Fund (1996)
 CFDA-Vogue Initiative/New York City AIDS Fund (1991)
 Ronald & Carole Chaimowitz Fund (1995)
 David & Miriam Chalfin Fund (1985)
 Maria Bowen Chapin Scholarship Fund (2005)
 Chapman Fund (2000)
 Charlie Company Scholarship Fund (1985)
 Charlie's Fund (1975)
 Gerald L. Chasin Fund (1986)
 Richard & Ellen Chassin Charitable Fund (2000)

- Chatham Fund (1984)
 Patrick S. Cheng & Michael J. Boothroyd Fund (2000)
 Herbert & Phyllis Chernin Fund (1996)
 Marjorie F. Chester Fund (1999)
 Children's Fund (1995)
 *Ettie Chin Hong Fund (2006)
 Christiansen/Shuchman Fund (1987)
 Francis & Catherine Christy Fund (1975)
 Clark Family Fund (2000)
 Cameron Clark Memorial Fund (1998)
 Edith M. Clark Fund (1944)
 Fenton Clark Fund (1986)
 Valerie G. Clark Memorial Fund (1978)
 Clarke-Kammerer Family Fund (2003)
 Kevin Cleary Memorial Fund (2001)
 Cline Foundation Fund (1995)
 Clinton Community Garden Fund (1985)
 Coco Fund (2000)
 Charles I. & Ellen F. Cogut Fund (1995)
 Helen Cohen Fund (1995)
 Lisa E. Cohen Memorial Scholarship Award Fund (1991)
 Susan B. Cohen Fund (1998)
 Cole Family Foundation Fund (1999)
 Coleman Family Fund (2003)
 John & Ann Coleman Fund (1984)
 Warren Coleman Fund (1986)
 Richard M. Colgate Fund (1959)
 Irene D. Colli Trust (1980)
 Columbus Circle Fund (1976)
 Composers Fund (1987)
 *Thomas J. Concannon Memorial Internship Fund (2006)
 Georgianna B. Conlin Fund (1998)
 Kevin P. Connors Fund (1986)
 Conroy Family Fund (1999)
 *Ashley Soule Conroy Fund (2006)
 Cook Family Fund (1986)
 Lane Cooper Fund (1960)
 Gertrude Corbitt Bequest (1959)
 Core Cash Fund (2005)
 Barbara Fatt Costikyan Fund (1999)
 Jennifer L. Costley & Judith E. Turkel Fund (2005)
 Melinda & James M. Cotter Fund (1986)
 Counterpoint Fund (1996)
 Valery Craane Fund (2004)
 Critchlow/McCormick Family Fund (2005)
 Charlotte L. Crittenden Fund (1932)
 A. Evelyn Cronquist Fund (1991)
 *Jim & Pat Cropsey Farm Fund (2006)
 William & Sally Cross Charitable Fund (2001)
 Winifred Crost Fund (1981)
 Andrew Crystal & Family Fund (2004)
 Charles E. Culpeper Fund (1999)
 Cumulus Fund (1992)
 *Curbstone Fund (2006)
 Cushman Family Fund (2003)
 Paul & Paulette Cushman Fund (1998)
- D**
- John Da Silva Memorial Fund No. 1 (1988)
 John Da Silva Memorial Fund No. 2 (1988)
 John Da Silva Memorial Fund No. 3 (1988)
 DAL Fund (1984)
 Danziger Family Fund (1973)
 Abraham L. Danziger Fund (1979)
 Ellen & Sabin Danziger Fund (1997)
 Darlington Fund (1973)
 Elizabeth B. Dater & Wm. Mitchell Jennings Jr. Fund (1999)
 Mildred & Warren Merrifield Squires Fund (2004)
- Davin Family Fund (1995)
 Davis Polk & Wardwell Fund (1997)
 Davis Polk & Wardwell Fund for Children (2001)
 Donna Scher Davis Fund No. 1 (1993)
 Donna Scher Davis Fund No. 2 (1996)
 Dawn Fund (2005)
 Day Memorial Fund (1948)
 Eugenia Ortuno de Bartels Fund (2002)
 G. Louise Robinson de Dombrowski Fund (1991)
 Adam de Havenon Fund (2004)
 Georgia & Michael de Havenon Fund (1986)
 De Lisio Family Charitable Fund (2003)
 Peter J. De Luca Family Fund (1991)
 Georges & Lois de Menil Charitable Fund (1977)
 Jay & Ruth De Soto Mayor Fund (2004)
 Ellen A. Dearborn Fund (1969)
 David & Diane DeBell Family Fund (2003)
 Richard & Barbara Debs Fund (1986)
 Deerdodds Fund (1997)
 Defliese Family Fund (1971)
 Albert P. Delacorte Fund (2005)
 George Delacorte Center for Magazine Journalism Fund (1998)
 George Delacorte Fund (1994)
 Valerie Delacorte Fund (1993)
 Delafield Fund (1975)
 *John & Patricia Delany Memorial Fund (2006)
 Delany Sisters Fund (1994)
 Denning/Bowman Fund (1986)
 Derby Fund (1983)
 Brian & Silvija Devine Fund (1986)
 J. Hugh & Nancy Devlin Fund (1986)
 Mary Wheeler Dewart Fund (1976)
 Diacre Family Fund (2003)
 Hester Diamond Fund (2002)
 Robert S. & Susan A. Diamond Fund (1986)
 DiBlasi Fund (2000)
 Esther Baiyla Dinner Memorial Fund (1999)
 William & Linda Doescher Charitable Fund (2003)
 Dogwood Fund (1979)
 Eugene, Bridget & Tommy Dolphin Scholarship Fund (1992)
 Susan Wells Donnell Fund (1984)
 William W. Donnell Fund (1994)
 William W. Donnell Fund for Parks (2003)
 A. James Donohue Fund (1986)
 Donors' Education Collaborative of New York City Fund (1992)
 Dora Fund (2001)
 Mr. & Mrs. Stephen M. Dowicz Fund (1994)
 John & Hebe Dowling Fund (1986)
 Nancy A. Downey Fund (1980)
 Robert N. Downey Fund (1977)
 Nathan & Miriam Drachman Fund (1989)
 W. Christopher Draper Fund (2003)
 Bruce Dresner Fund (1993)
 Leon Drew Fund (2001)
 Drexel Burnham Lambert Fund (1995)
 Dreyfus Charitable Fund (2001)
 Beatrice L. Drossman Fund (1998)
 James R. Dumpson Fund (1999)
 William M. Duncan Family Fund (1986)
 T. J. Dermot Dunphy Fund (1984)
 Dutch Kills Civic Association Fund (1994)
 Solomon Dutka Fund (1999)
- E**
- East Harlem Tutorial Program Fund (1997)
 Evelyn & Jack Eber Fund (1995)
 Ebusu Fund (1993)
 E.C.B. Fund (1960)

Economic Justice Fund (1989)
 Julius & Margarete Edelstein Fund (1991)
 Edlow Fund (1996)
 Eleanor Franklin Egan Memorial Fund (1927)
 E.H.C. Foundation (1967)
 Einhorn/Lasky Family Fund (1999)
 Dr. Moses Einhorn Fund (1964)
 Eiseman Altschuler Fund (2003)
 Irving & Blanche Eisenberg Charitable Fund (1995)
 Carole & Richard Eisner Fund (1980)
 Claudio Elia Fund (1997)
 Dr. Deborah Elkins Fund (1993)
 Gertrude Elkins Memorial Fund (1993)
 Howard L. Ellin Charitable Fund (2003)
 Nancie Ellis Fund (2004)
 ELSAM Fund (1999)
 Lita & Walter Elvers/Zipperian Fund (1999)
 Henry C. Enders Funds (1976)
 Mildred F. Englander Fund (1985)
 Enos Fund (1983)
 Samuel Epstein Lecture Fund (1999)
 Josephine L. Erwin Fund (1935)
 James A. Essey & Nina Zakin Essey Fund (1994)
 Evans Family Fund (1995)
 Bradford & Barbara Evans Fund (1986)
 Everett Philanthropic Fund (1986)

F

Fahnestock Family Fund (1980)
 Fahs-Beck Fund for Research & Experimentation (1986)
 Fahs-Beck Fund II for Research & Experimentation (1993)
 Edgar W.B. Fairchild Fund (1992)
 Fairway Fund (1987)
 Falk, Lichten & Rosenstein Fund (1995)
 David Falk Memorial Fund (1989)
 Susan Meyers Falk Fund (1996)
 Joseph Fancher Fund (1983)
 Farrand Family Fund (1993)
 Faunsdale Fund (1986)
 *FBS Fund (2006)
 Emanuel & Bertha Feder Memorial Fund (1994)
 Federal Bar Council/U.S. Attorneys' Offices Fund (2001)
 Robert B. Feduniak Fund (1986)
 Feinsod Herz Fund (1980)
 Feldman Family Fund (1982)
 Louise & Marvin Fenster Family Fund (1999)
 Anthony & Vanda Ficalora Fund (1988)
 Judith & Norman Fields Fund (1992)
 Raymond H. Fiero Fund (1984)
 Brian Keith Fifield Memorial Scholarship Fund (1987)
 Filak Family Fund (1999)
 Simon Finck Fund (1959)
 Golda & Mollie Fine Fund (1977)
 Laura & Michael G. Fisch Fund (1999)
 Fishbein Family Fund (1998)
 Mitchell S. Fishman Donor-Advised Fund (1999)
 Robert B. Fiske, Jr. U.S. Attorneys Fellowship Fund (1987)
 Desmond Gerald FitzGerald Charitable Fund (1986)
 Kirsten Flagstad Memorial (1964)
 William E. Flaherty Family Fund (1998)
 *Flanagan Fund (2006)
 Sam Flax Memorial Scholarship Fund (1964)
 Fletcher Fund (1999)
 Elizabeth H. & Irvine D. Flinn Fund (1999)
 Josephine Flood Memorial (1950)
 Francis Florio Funds (1974)
 Flushing Females Association Scholarship Fund (1992)
 Michel Fokine Memorial Fund (1985)

Walter B. Ford Funds (1972)
 Fortune Society Education Fund (1994)
 Fosdick Fund (1986)
 David Foster & Mina Samuels Fund (1997)
 John H. Foster Fund (1984)
 Ben Fox Memorial Fund (1962)
 Ellen Fox Family Fund (1994)
 Adam Frand Fund (1998)
 Frank Fund (1995)
 Abraham B. & Sarah Frank Funds (1955)
 Martin M. Frank Scholarship Fund (1990)
 Thomas W. & Claire W. Frank Fund (1977)
 *Katherine M. Franke Fund (2006)
 Corinne R. Frear Fund (2000)
 Arthur & Elinor Fredston Fund (2004)
 David Freedman Fund (1994)
 Ernest Grey Frerking/Sharon Frerking Philanthropic Fund (2005)
 Robert & Linda Friedman Family Fund (1995)
 Robert L. & Barbara L. Friedman (2005)
 Fuld Family Fund (1991)
 Kenneth & Margo Fuld Fund (2001)
 Fuller Fund (1986)
 Fun On 2 Wheels Fund (1998)
 Fund for Autistic Children (2000)
 Fund for the Delacorte Theatre in Central Park (1998)
 Fund for Fiorello H. LaGuardia High School of Music & Arts (1983)
 Fund for New Citizens (1987)
 Fund for Performances at the Delacorte Theatre in Central Park (1999)
 Future of Design Jewelry Education Fund (1997)

G

Laly & George Gallantz Fund (1991)
 Gallogly Strickler Family Fund (2003)
 Donald R. Gant Fund (1979)
 Gardner Family Fund (2003)
 William T. Gardner Theatre Internship Fund (1992)
 Gloria & Barry H. Garfinkel Fund (1986)
 Barbara Gauntlett Scholarship Fund (1986)
 Paul Edward Gay Fund (1990)
 Geduld Fund (1993)
 Victoria & E.E. Geduld 'Starworks' Fund (1995)
 Bruce S. Gelb Fund (1995)
 Gemini Fund (1998)
 General Charitable Fund (1971)
 Ruth E. & Timothy M. George Charitable Fund (1986)
 Jacques A. Gerard Fund (1987)
 Pierce Gerety Memorial Fund (1998)
 Jerrold Gertz Fund (2004)
 Kathryn & Benjamin Ira Gertz Fund (2004)
 Clara A. Gierisch Fund (1975)
 John N. & Gillett A. Gilbert Family Fund (1999)
 Nancy & Lloyd Gilbert Fund (2003)
 Elena Gildersleeve Fund (1982)
 Stephen Gillen Family Fund (2004)
 Frank J. Gillespie Fund (1985)
 Gilmore Human Rights Fund (1980)
 Sonia Raiziss Giop Literature Fund (1994)
 Santina Giordano Memorial Fund (1985)
 Glaser Family Fund (1994)
 Robert J. Glenn Memorial Fund (1974)
 Rose N. Glenn Memorial Fund (1990)
 Danny Glick Memorial Scholarship Fund (2001)
 Gloria Fund (1981)
 Madeline Shobry's Glostien Fund (1999)
 Goins Family Fund (2003)

Steven & Jan Golann Fund (1998)
 Gold-Schiff Fund (1994)
 Rita & Herbert Z. Gold Education Fund (1993)
 *Goldberg/Burke Family Fund (2006)
 Golden Family Fund (1992)
 Goldman Sachs Fund (1970)
 *Goldman Schachar Charitable Fund (2006)
 Jack Goldring Fund (1986)
 Alice & Stanley Goldstein Fund (1997)
 Eric L. Goldstein Fund (1999)
 Patricia & Bernard Goldstein Fund (1985)
 Good Samaritan Fund (1993)
 Maurice & Georgine Goodman Fund (1998)
 Lawrence & Katherine Goodman U.S.S. Missouri Memorial Fund (2004)
 Roger & JoAnn Goodspeed Fund (1986)
 Goodwin Family Fund (1999)
 Everett F. & Ann P. Gordon Memorial Fund (1991)
 Gail Gordon Fund (2000)
 William J. Gossen Fund (1985)
 Josh Gotbaum & Joyce Thornhill Fund (1991)
 *Deborah Gottlieb-Shapiro Family Fund (2006)
 Lee Gottlieb Fund (2005)
 *Lynda Gould Fund (2006)
 Gouverneur Hospital Fund (1958)
 Eugen Grabscheid Fund (1992)
 Howard E. Grace Fund (1998)
 Paul & Anne Grand Fund (2004)
 Joan P. Grano Memorial Fund (1996)
 Maggie & Gordon Gray Family Fund (1998)
 Green Fund (1985)
 Lawrence & Barbara Green Fund (2005)
 Orland S. & Frances S. Greene Fund (1962)
 Greenebaum Fund (1984)
 John Robert Gregg Fund (1985)
 J & J Gribetz Fund (1983)
 Linda A. Griffith Fund (1970)
 Arthur Griggs Fund (1947)
 Emily Griggs Fund (1944)
 Gross Family Fund (2003)
 Stella Grover Fund (2005)
 W. R. Gruver Fund (1986)
 Rudolph Guenther Fund (1977)
 Sydney A. Guggenheimer Memorial Fund (1949)
 Sarah G. Gund Fund (2005)
 Gunn Family Fund (1999)
 Gwertzman Family Fund (2004)

H
 Haas Foundation Fund (2000)
 Leopold Haas Fund (1984)
 Katherine & Morris Hadley Trust (1968)
 Horace & Amy Hagedorn Fund (1995)
 Emil & Zerline Hahnloser-Richard Bak Fund (1975)
 Hajim Family Fund (1983)
 James F. Haley Memorial Fund (1983)
 Luke Halpin Memorial Scholarship Fund (2002)
 Carol D. & S. Sutton Hamilton Charitable Fund (2003)
 *Richard & Martha Handler Fund (2006)
 Mike Handy Memorial Fund (2003)
 Lola G. Hanna Fund (1995)
 Gwenda & John Hanson Fund (1986)
 Lee Hanson & Don Scherer Fund (1986)
 Harbor Watch Fund (2000)
 William Barclay Harding Fund (1979)
 Augusta Lehman Harlem & Lillian Harlem Martin Fund (2000)
 Harmony Fund (1986)
 Elisabeth Scott Harms Fund (1982)

James W. Harpel Fund (1983)
 Jon Harrington Fund (2003)
 Harris Family Fund (1992)
 Charlotte Daniels Harris Memorial Fund (2002)
 Elsie & Chelsea Harris Memorial Fund (1996)
 Jeff & Judy Harris Fund (2003)
 Katharine S. Harris Fund (1965)
 William Harris Fund (2000)
 *Kim & Alan Hartman Fund (2006)
 Hastings Peace & Justice Fund (1993)
 Haupt Family Fund (2000)
 Harry & Eugenie Havemeyer Fund (2001)
 Hawk's Nest Fund (2000)
 Hawthorne Lane Fund (1986)
 Steve Hayden Fund (2004)
 Hayes Family Fund (1996)
 Ralph Hayes Memorial Fund (1968)
 Constance Laibe Hays Journalism Fund (1994)
 Health & AIDS Education Fund (1991)
 Thomas Healy & Fred P. Hochberg Fund No. 1 (1995)
 Thomas Healy & Fred P. Hochberg Fund No. 2 (1995)
 Thomas P. Healy Fund (2003)
 Nicholas C. Heaney Memorial Fund (1997)
 Stella & Howard A. Heffron Fund (1998)
 *Broderick J. Hehman Memorial Fund (2006)
 Heiser Grant (1972)
 Hemangioma Education & Research Fund (1994)
 Hemlocks Fund (1978)
 Mercedes R. Henderson Memorial Fund (1996)
 Paul & Ann Henegan Fund (1986)
 Ruth Hennig Fund (2003)
 Lucy Henning Memorial Fund (1995)
 Lucy & George Henning Fund (1974)
 Alexander S. Henry, Sr. & Ann S. Henry Memorial Fund A (1989)
 Alexander S. Henry, Sr. & Ann S. Henry Memorial Fund B (1995)
 Doris & Milton Hepner Fund (2000)
 Herbster Family Fund (1990)
 Jane R. & Andrew L. Herz Fund for Criminal Justice (1986)
 Frances A. Hess Fund (2005)
 Don & Marilyn Berger Hewitt Fund (1998)
 Leo & Ethel Heymann Memorial Fund (1954)
 Murray Hidary Fund (1998)
 High Exposure Fund (1993)
 High School of Commerce, Class of 1911 Scholarship Fund (1967)
 *Ann & Leon Himelberg Fund (2006)
 Hintz Family Fund (1991)
 Hirsch Fund (1986)
 Peter M. Hirsch Memorial for Thyroid Cancer Research Fund (2001)
 Steven Hirsch Fund D (1973)
 Steven J. Hirsch Fund (2002)
 Susan Hirschman Fund (1999)
 Martin Hirschorn IAC Fund (1995)
 Margaret M. Hitchcock Fund (1946)
 Ho/Ching Charitable Fund (2003)
 Mary & David Hoar Trust for the Honor & Glory of God (1975)
 Rita & Irwin Hochberg Charitable Fund (1982)
 Charles & Fredrica Hochman Fund (2004)
 Hodgson Fund (1995)
 John J. Hoffee Fund (1996)
 *Peter & Daphne Hoffman Donor Advised Fund (2006)
 Gloria & Joel S. Hoffman Fund (2001)
 Jane & Michael Hoffman Charitable Gift Fund (2003)
 Marion O. & Maximilian E. Hoffman Fund (1984)

Lillian & William Hoffmanns Fund (1990)
Sharon King Hoge Fund (2000)
Holmen Family Fund (2002)
Britt Holmen Family Fund (2002)
Mark Holmen Family Fund (2002)
Robert C. Holmen Family Fund (2002)
Homeless Outreach & Assistance Fund (1997)
Horing Family Fund (2001)
Katie Danziger Horowitz & Steven G. Horowitz Family Fund (1995)
Saul Horowitz, Jr. Fund (1999)
John & Sandra Horvitz Fund (1996)
Norris Houghton Theatre Fund (1988)
Allan Houston Charitable Fund (2001)
*Joseph Howard Fund (2006)
Ralph N. Hubbard Fund (1948)
Doctor Joseph E. Hughes Scholarship Fund (1984)
Margaret J. Hughes Memorial Fund (1990)
W. Ockham Hume Fund (2003)
Mildred K. Hurson Fund (2003)
Rene K. & Samuel M. Hyman Memorial Fund (1978)

I

I Get Fund (1991)
Charles F. Ikle Scholarship & Research Funds (1965)
Indian Mountain School Fund (1993)
George A. Ingalls & Ann C. Ingalls Fund (1957)
Ingraham Fund (1986)
Innovative Design Fund (1988)
Intrepid Fund (1976)
Paul J. Isaac Fund (1981)
Iseman Eleemosynary Fund (1999)
Island Fund (1975)
Isabel C. & Walter T. Iverson Fund (1986)

J

J B Fund (1985)
Jackson Fabrics Associates Fund (1986)
Frederick Jacobi Memorial (1952)
Jacqueline Kennedy Onassis High School Fund (1997)
Jaffe Education Fund (1995)
Cyril D. & Elena Jalon Fund (1986)
Jamaica Fund (1989)
Lucy Wortham James Fund (1935)
Lucy Wortham James Memorial (1939)
Walter B. James Fund No. 1 (1927)
Walter B. James Fund No. 2 (1927)
Jamestown Fund (1990)
*Warren S. & Florence L. Jampol Fund (2006)
Jeanne d'Arc Foundation (1927)
JEHT Fund (1999)
Daniel J. Jenks Memorial Fund (2005)
Jenny-Hiteshew Fund (1994)
Elise Jerard Environmental & Humanitarian Trust (1981)
JM Legacy Fund (2000)
Harry J. & Teresa H. Johnson Graduate Scholarship Fund (1987)
Harry J. & Teresa H. Johnson Scholarship Fund (1983)
Harry J. & Teresa H. Johnson Scholarship Fund No. 2 (1985)
Laura & Ray Johnson Fund (2003)
Johnson Street Fund (1992)
Jophed/Thomas Fund (1975)
*JQW Fund (2006)

K

Annette Kade Fund (1994)
KAL 007 Victims Memorial Fund (1988)
Michael Kalil Foundation Fund (1992)

Seth & Barbara Lewis Kaplan Fund (1998)
Susan Grant Kaplansky Fund (2001)
Barbara & William Karatz Fund (1986)
Roberta & Brad Karp Family Fund (2004)
Hagop. Arousiag & Arpy Kashmanian Scholarship Fund (1999)
Robert A. Kasner Fund (2005)
Katrina Relief Fund (2005)
Leander & Helen Katsidhe Fund (1999)
Judy Katz/Oren Rudavsky Fund (1996)
Dr. Martin R. Katz Fund for Culinary Arts (1988)
Glenn & Kim Kaufman Fund (2004)
Robert M. Kaufman Fund (1988)
Robert M. Kaufman Fund No. 2 (2002)
Marion Esser Kaufmann Fund (1985)
Walter & Selma Kaye Fund (1994)
Paul Kazanoff Memorial Fund (1998)
Hamilton F. Kean Fund (1985)
Kearney Family Fund (2004)
Adrian & Alieda Keevil Fund (2004)
Robert Prior Kehoe Fund (1974)
Richard Keim Family Fund (1983)
William Wilson Kelchner Memorial Fund (1972)
Jane & Donald Seymour Kelley Fund (1997)
Peter L. Kellner Fund (1986)
Kelner Family Fund (1996)
Carl & Doris Kempner Fund (1996)
Michael C. Kempner Fund (1997)
Kenary Fund (2004)
Kenilworth Fund (1970)
Friends of Jim Keresey Fund (2001)
Gilbert N. Kerlin Fund (2005)
Jonathan O. Kerlin Fund (2005)
Ellen Kheel & Arnold S. Jacobs Fund (1998)
King Family Fund (2000)
Harold Thomas King Jr. & Lisbeth King Fund (1986)
Kira Fund (1992)
Joseph M. Kirchheimer Fund (1989)
John H. Kirst Memorial Fund (1999)
Kismet Fund (2005)
Susan B. & Donald M. Kitchen Fund (1989)
Casey Kizziah Fund (1994)
Andrew Bradford Klein Fund (2001)
John C. Klein Trust (1981)
Sharon Klein Memorial Fund (2002)
Ted Klein Fund (2000)
Morris Kligman Memorial Fund (2000)
Jane & Richard Koch Fund (1987)
Mary Conway Kohler Fund (1986)
KOKORO Fund (2004)
Korda Fund (1990)
Dr. Joseph M. & Grace Koreen Micha Scholarship Fund, Israel (1986)
William A. Koshland Fund (1987)
John C. Koster Fund (2003)
Patricia Berry Kozak Fund (2004)
Kozukai Fund (2003)
Henry Phillip Kraft Family Memorial Fund (1996)
Sydney & Marjory Krause Fund A (2004)
Sydney & Marjory Krause Fund B (2003)
Sydney & Marjory Krause Fund C (2003)
Michael & Patricia Kraynak Fund (1986)
Susan J. Kropf Fund (2002)
Mark Krueger Charitable Fund (2004)
Bernie & Lydia Kukoff Fund (2005)
Wheaton B. Kunhardt Fund (1949)

L

Lachance Family Charitable Fund (2003)
 Benjamin V. & Linda L. Lambert Fund (1996)
 Lampe Family Fund (2005)
 Lamport Foundation Fund (1975)
 Landlocked Fund (1986)
 Allan Browning Lane Memorial Funds (1980)
 Lang Fund (1982)
 Langner Family Fund (2000)
 Catherine & Henry Lanier Family Fund (1998)
 Judith & Jean Lanier Fund (1986)
 Rose Kean Lansbury Fund (2000)
 May Seton Bayley Large Memorial (1928)
 LaRosa/Zurkuhlen Fund (1997)
 William S. & Stanley S. Lasdon Fund (1984)
 David Lawrence Fund (2000)
 Le Veque Memorial Foundation (1984)
 Ledges Fund (1996)
 Lee Family Chinese Immigrant Education Fund (2001)
 Leede Family Fund (1996)
 Jeffrey R. & Joan Leeds Fund (2005)
 Howard Z. Leffel Fund (1970)
 Lefrak Non-Advised Fund (1999)
 Lehman Brothers Fund (1980)
 Lehman Brothers T. Christopher Pettit Memorial Fund (1998)
 Delia & Artemio León Fund (1997)
 Frederick H. Leonhardt Fund (1979)
 Leonia High School Class of 1979 Entrepreneurship
 Scholarship Fund (2001)
 Reba Q. Lerch Fund (1971)
 Betty & John A. Levin Fund (1998)
 David P. & Peggy Levin Fund (1995)
 Dustin Levine Fund (2000)
 Robert & Patricia Levinson Fund (1985)
 Jacob Levy Fund (1990)
 Carolyn & Edward Lewis Fund (2005)
 Wadsworth Russell Lewis Trust Fund (1989)
 Henry & Janine Lichstein Family Fund (1992)
 Lichtenstein-Miller Fund (1994)
 Barbara & Richard Lieberman Fund (1979)
 Dawn Lille Dance Award Fund (1994)
 Robert & Maria Lin Fund (1992)
 Ken Lin Fund (2002)
 Linden Memorial Fund (1994)
 Adolf G. & Eloise Linden Scholarship Fund (1995)
 Alexander & Ella Lindey Fund (1991)
 Lindgren Family Fund (1999)
 George N. & Mary D. Lindsay Fund (1996)
 Linwood Fund (1983)
 Lion & Hare Fund (1970)
 Lannie S. & Howard A. Lipson Fund (2001)
 Literacy in Early Childhood Fund (2000)
 Edward H. Little Memorial Trust (1982)
 Royal Little Fund (1992)
 Nancy Liu Memorial Fund (1995)
 Livingston Fund (1995)
 Arthur L. Loeb Fund (1982)
 Frances L. Loeb Fund (1974)
 Loewenberg Foundation, Inc. Philanthropic Fund (1983)
 Wilhelm Loewenstein Memorial Fund (1940)
 Michael Lomax Memorial Fund (2001)
 *Peter C. Lombardo MD Fund (2006)
 Jane P. Long Fund (1991)
 Clara & Bevis Longstreth Fund (1996)
 Longview Fund (1990)
 Elizabeth Meyer Lorentz Fund (2002)
 Los Altos Anonymous Fund (2001)
 Thomas H. Loughman Memorial Scholarship Fund (1978)

Ellee J. Lovelace Fund (1970)
 Ruth Norden Lowe & Warner L. Lowe Memorial Fund (1990)
 Lowenstein Fund (2002)
 Rena M. Lucardi Fund (1997)
 Lucien Fund (2000)
 Melvin Ludwig Memorial Fund (1993)
 Judge J. Edward Lumbard U.S. Attorneys Fellowship Fund
 (1977)
 *LW Fund (2006)
 Lynford Family Fund (1988)
 Amelia & George Lyons Memorial Fund (1994)

M

M & N Fund (2000)
 Clara L. Macbeth Funds (1977)
 Sharon & William Macey, Jr. Fund (2000)
 Nancy G. & C. Richard MacGrath Fund (1996)
 Afifie & Richard Macksoud Foundation (1975)
 Lloyd F. MacMahon Fellowship Fund (1989)
 John D. Macomber Fund (1999)
 Camp Edith Macy Fund (1926)
 Edith Carpenter Macy Memorial Fund (1926)
 Wilson H. Madden, Jr. Fund (1993)
 Maginnis Family Fund (1994)
 Brian & Florence Mahony Fund (1997)
 Major Fund (1971)
 T. Maltese Fund (1998)
 Jan W. Mares Fund (1978)
 Mark Family Fund (1986)
 Alison Billie Marks Memorial Fund (1993)
 Dora, Edythe K., & Sylvia Marks Family Fund (1999)
 Dorothy Marks Fund (1997)
 Royal S. Marks Foundation Fund (1992)
 Lory & Carol Marlantes Family Charitable Fund (2005)
 Marlin-van Stockum Fund (1995)
 Alfred J. Marrow Fund (1974)
 *Marian & Leonard Marsh Charitable Fund (2006)
 Patricia T. Marshall Fund (1998)
 Marstrid Fund (2003)
 Suzette Brooks Masters & Seth J. Masters Fund (1999)
 Vincent James Mastronardi/Thomas J. Fahey Memorial
 Fund (1993)
 Margaret Mathews Fund (2001)
 MacDonald Mathey Fund (2001)
 Mathys Fund (2000)
 *Joyce Matz Fund (2006)
 Edward Maverick Fund (1963)
 Maxwell Family Fund (1991)
 Claudia Kress Mayberry Fund (2000)
 Jessica Kress Mayberry Fund (2000)
 Paul M. Mazur Fund (1945)
 Peter & Drusilla Mazur Fund (1975)
 McAfee Foundation Fund (2003)
 Sarah S. McAlpin Fund (1996)
 Townsend Martin McAlpin Fund (1983)
 Blanche & Edwin D. McArthur Fund (1999)
 McCaffrey Family Fund (1985)
 McClendon Fund (1999)
 Cyrus McCormick & Florence S. McCormick Memorial
 Fund (1995)
 Colonel & Mrs. Henry Bayard McCoy Memorial Fund (1957)
 Ruth McCreary Fund No. 1 (2001)
 Ruth McCreary Fund No. 2 (2001)
 Alonzo L. McDonald Family Fund (1983)
 Donald Wesley McDougall Memorial Fund (1991)
 John Todd McDowell Environmental Fund (2004)
 Michael R. McGarvey Fund (2001)
 Richard E. "Rusty" McGivney Memorial Fund (1999)

John F. & Jean C. McIlwain Fund (1995)
 Mark McInerney Fund (1986)
 Dave McKennan Memorial Fund (2003)
 Isabel C. McKenzie Fund (1952)
 Janet H. McPherson Memorial Funds for Children (1984)
 Emily McIntyre Means Fund (1995)
 *Kurt A. & Therese A. Melden Fund (2006)
 Melzer Fund (1994)
 Toni Mendez Fund (2003)
 Friedrike Merck Fund (2002)
 George W. Merck Fund (1987)
 John Merck Fund (1981)
 Helen Merrill Fund (1998)
 Ralph D. Mershon Trust (1953)
 LuEsther T. Mertz Fund (1995)
 LuEsther T. Mertz Advised Fund (1995)
 Charles Merz & Evelyn Scott Merz Memorial Fund No. 1 (1984)
 Charles Merz & Evelyn Scott Merz Memorial Fund No. 2 (1984)
 Merz Supplemental Fund (1986)
 Ruth W. Messinger Fund (1995)
 Sharon Metrick Memorial Fund (2001)
 Michaels Fund (1979)
 Jeanne Michaud Gift (1964)
 Middle Road Fund (1983)
 Midnight Mission Fund (1974)
 Midtown Fund (1997)
 Gregory Millard Memorial Fund (1985)
 *Earl Miller Fund (2006)
 M.J.H. Fund (1964)
 MLW Advised Fund (1998)
 Mobility Rehabilitation Fund (1964)
 Leo Model Fund (1988)
 Moles Scholarship Fund (1996)
 Molly & Carl Fund (2000)
 Monmouth Fund (1984)
 Moore Family Fund (1994)
 Barbara F. & Richard W. Moore Fund (1997)
 Shirley I. Moore Fund (2002)
 Terence W. Moore Memorial Fund (2004)
 Moosehead Fund (1996)
 Arthur G. Moraes Memorial Fund (1999)
 Marie Morgello Book Fund (1993)
 Jenny Morgenthau & Eugene R. Anderson Fund (1992)
 Morningside Retirement & Health Services, Inc. Fund (1993)
 Helene & Bruce Morrell Fund (1999)
 Morris Opportunity Fund (1976)
 *Morris Fund (2006)
 Alice V. & Dave H. Morris Memorial (1958)
 Jennifer Emily Morris Memorial Fund (1985)
 Lawrence Morris Charitable Trust (1992)
 Robert C. Morris & Aline B. Morris Fund (1939)
 Georgiana Koenig Morrison Fund in Memory of Cyrus Morrison (1990)
 Ray Mortenson-Jean Wardle Fund (1996)
 George T. Mortimer Foundation (1970)
 *Morvillo, Abramowitz, Grand, Iason, Anello & Bohrer, P.C. Fund (2006)
 Moses Fund (1992)
 Hanna & Jeffrey Moskin Family Fund (1997)
 Sam & Fanny Moskowitz Fund (1986)
 Sheila & James Mossman Fund (2000)
 *Daniel Motulsky & Caitlin Pincus Fund (2006)
 Mount of Olives Fund (1989)
 Frieda Mueller Fund (1981)
 Suzanne C. & Carl M. Mueller Charitable Fund (1999)
 Joanna Mufson Memorial Trust Fund (1983)

Mulber Fund (1947)
 Stephen Mulderry Memorial Fund (2001)
 Alexandra Munroe Fund (2002)
 Munson Foundation (1978)
 Marjorie Oatman Munson Memorial Fund (1980)
 Thomas W. & Florence T. Murphy Fund (1984)
 Virginia Murphy Memorial Scholarship Fund (1954)
 William & Janice Murphy Charitable Fund (2003)
 Musical Arts Fund (1939)
 Mustard Seed Fund (2000)

N

Nager-Wentworth Fund (1993)
 Anni P. Nalbandian Memorial Scholarship Fund (1997)
 Nana & Annie's Fund (1999)
 Murray L. & Belle C. Nathan Fund (1996)
 Walter W. Naumburg Memorial No.1 (1960)
 Walter W. Naumburg Memorial No.2 (1960)
 Navesink River Group Fund (2002)
 Gabe & Beth Nechamkin Fund (1997)
 Richard H. Needham Fund (1995)
 Ilse Nelson Fund (1986)
 Martin & Estelle Nelson Fund (1992)
 Ness Fund (1972)
 Netmarket Fund (2000)
 Neuberger Berman, LLC Fund (1997)
 Daniel Neubourg Fund (1999)
 Nicole & Mark Neuhaus Fund (2000)
 Never Done Fund (2005)
 New York City AIDS Fund (1988)
 New York Critical Needs Fund (1975)
 New York Critical Needs Endowment (2004)
 Friends of New York Downtown Hospital Health Sciences Scholarship (1996)
 "New York It Ain't Over" Fund (1993)
 New York Keller Family Fund (2004)
 New York Vietnam Veterans Memorial Fund (1983)
 Annalee Newman Fund (1998)
 Arthur B. & Eileen D. Newman Charitable Fund (2003)
 *Reverend & Mrs. R. Heber Newton Fund (2006)
 Hally & James Nicol Fund (1998)
 Herbert Nidenberg Scholarship Fund (1993)
 Nimble Waiter Fund (2004)
 Nolan Family Fund (2005)
 Nollmann Fund (2004)
 Olivia Schieffelin Nordberg Fund (1996)
 Northcliff Philanthropic Fund (1979)
 Adelaide Walker Nugent Fund (1974)
 *NUPIK Fund (2006)
 NYC Workforce Development Fund (2001)

O

Oak & Acorn Fund (2000)
 *Dennis Oakes & Debra Rahn-Oakes Fund (2006)
 Oasis Fund (1984)
 Lindsay & Terry O'Brien Fund (2002)
 Sheila J. O'Connell Advised Fund (1999)
 A.P.J. O'Connor Fund (1996)
 Robert K. & Jean O'Connor Fund (1979)
 William B. O'Connor Fund (1996)
 Octagon Fund (1978)
 Mary P. Oenslager Foundation Fund (1996)
 Abraham Oestreicher Fund (1972)
 John Ogden Memorial Fund (1986)
 O'Hanlan-Walker Family Fund (2003)
 Florence C. Oliveira Memorial (1969)
 Olmezer Family Fund (1998)
 Olni Fund (1998)

*Frederick J. O'Meally Charitable Fund (2006)
 *One Region Fund (2006)
 Open Door Fund (1996)
 Oppenheim Family Fund (2000)
 Martin & Suzi Oppenheimer Philanthropic Fund (1998)
 Origo-Levy Animal Care Fund (1993)
 Origo-Levy Child Welfare Fund (1993)
 Susan Orkin Fund (2005)
 Maxwell Orloff Fund (1998)
 Donald R. Osborn Fund (1986)
 Courtlandt Otis Fund (1973)
 Jeanne Marie Otter Scholarship Fund (1989)
 Outdoor Life Conservation Fund (1998)
 Overlook Fund (1971)
 Owen Fund (1986)

P

F. LeMoyne Page Memorial Fund (1977)
 Mary LeMoyne Page & Romaine LeMoyne Billings Memorial Fund (1980)
 Manfred Pakas Scholarship Fund (1981)
 Heidi Paoli Fund (1987)
 Papa & Nunu Fund (1999)
 Katharine A. Park Funds for the Elderly (1982)
 William Hallock Park Research Fund (1976)
 Parkinson Fund (1995)
 Lorenzo & Isabelle Parsons Scholarship Fund (1998)
 Mary Sherman Parsons Fund (2005)
 Partnership for Family Supports & Justice Fund (2002)
 Partridge Fund (1997)
 Patricof Family Foundation Fund (1979)
 Robert P. Patterson Memorial (1952)
 Oliver H. & Lola G. Payne Fund (1994)
 Marion & Bret Pearlman Charitable Fund (2003)
 Pedowitz Family Fund (1999)
 Pennies from Heaven Fund (2001)
 Penobscot Fund (1993)
 Donald & Miriam Marya Perkins Charitable Fund (1989)
 Dorothy Perlow Fund (1996)
 Jacob Perlow Memorial Fund (1983)
 Irene Peron Fund (2000)
 CB Perrette Fund (1999)
 Virginia & Jean R. Perrette Fund (1997)
 Richard L. Perry Memorial (1935)
 Leonard L. Perskie Memorial Fund (1980)
 Petersmeyer Family Fund (1973)
 Peter G. Peterson Fund (1977)
 Peter G. Peterson & Joan Ganz Cooney Fund (1980)
 Seymour & Beverly Peyser Fund (1986)
 Phil Fund (2001)
 Hal Philipps Fund (2003)
 Kenneth A. & Helen Clark Phillips Fund (1972)
 Charles M. Phinny Fund (1987)
 John P. Picone Charitable Foundation Fund (2004)
 Chad Pike Family Fund (2005)
 Pilkington Family Fund (1996)
 *Don & Marnie Pillsbury Fund (2006)
 Pilot House Fund (1985)
 Pine Cone Fund (2000)
 Pine Tree #2 Fund (2000)
 Pinkerton Trust (1979)
 Marietta C. Pino Memorial Fund (1982)
 Emanuel & Nora Piore Fund (2002)
 Emanuel & Nora Piore Memorial Fund (2002)
 John Polachek Fund (1958)
 Samuel S. & Anne H. Polk Charitable Fund (2000)
 *Sam & Anne Polk Family Fund (2006)
 Maxwell A. Pollack Fund (1986)

Leo L. Pollak Memorial Fund (1984)
 Richard H. Pollak Fund (1987)
 Helene Pomerantz Memorial Fund (1991)
 Katharine Sloan Pratt Fund (2002)
 Barbara & Robert Preiskel Fund (1986)
 Robert & Barbara Preiskel Memorial Fund (2002)
 President's Fund (2004)
 Sidney S. Prince Trust (1964)
 Thomas Pringle Memorial/Margaret Pringle Fenton Fund (1957)
 Thomas Pringle Memorial/Samuel Pringle Fund (1957)
 Robert & Ilse Prosnitz Fund (1999)
 Publishing Triangle Literary Fund (2004)
 Valerie & Michael A. Puglisi Fund (2003)
 Pundyk Family Fund (1998)
 Pyewacket Fund (1997)

Q

Q Fund (1996)
 Quasha Family Fund (1995)
 Queens College Speech & Hearing Center Fund (1999)
 Alan G. Quitko Fund (1997)

R

RAB Fund (1975)
 Radin Family Fund (2005)
 R.A. Radley Fund (1994)
 Ragin Family Fund (2002)
 Raiziss/de Palchi Translation Award Fund (1994)
 Calvin Ramsey Scholarship Fund (2003)
 Addison C. Rand Fund (1940)
 Lynne S. Randall Charitable Fund (2005)
 Carl & Toni Randolph Fund (2000)
 Ralph J. Rangel Fund (1989)
 Rankin-Smith Fund (1985)
 Anthony E. & Josephine C. Rapp Fund (1996)
 F&R Ravitz Family Fund (1997)
 Jeanne & Norman Reader Better English Award Fund (1997)
 Readers Digest Scholarship & Leadership Fund (1974)
 Rebold Family Fund (2000)
 Red Dog Hill Fund (2004)
 Redstone Fund (1997)
 Philip D. Reed Fund (1996)
 Thomas D. & Natalie B. Rees Family Fund (1996)
 Joseph E. Reich Fund (1986)
 Henry H. Reichhold Scholarship Fund (1968)
 Cordelia & David Reimers Fund (2002)
 Rudyard & Emanuella Reimss Memorial Fund (2001)
 Reingold Family Fund (2000)
 Jerilyn Hayes Reiter Memorial Scholarship Fund (2001)
 Rembrandt Fund (1977)
 Eugene H. & Patricia C. Remmer Fund (1986)
 Karl F. Reuling Fund (1993)
 Reynwood Fund (1986)
 R. Rheinstein Fund (1999)
 Audrey Rheinstrom & Anne Blevins Fund (2003)
 Rhodebeck Central Park Conservancy Fund (1999)
 Rhodebeck Charitable Fund (2004)
 Rhodebeck Fund for the Elderly (1989)
 Rhodebeck Fund for the Homeless (1989)
 Rhodebeck Prospect Park Fund (2005)
 Rhodebeck Fund for St. George's Society of New York (2001)
 Grantland Rice Fellowship Fund (1951)
 Marion & George Riley Fund (1968)
 Rinaker Family Fund (1983)
 Henry P. Riordan Fund (1990)
 James Q. & Ruth M. Riordan Fund (1983)
 Jordan Carlson Riordan & James Quentin Riordan III Memorial Fund (2003)

Rippe Family Fund (2001)
 Virginia S. Risley Family Fund (1995)
 Virginia S. Risley Fund (2004)
 Kimberly Ritrievi Fund (2004)
 Emilie D. Robb Fund (1938)
 Patricia & Yves Robert Fund (1998)
 Roberts Family Fund (1999)
 Linda Roberts Fund (2004)
 Robinson-Morrill Fund (1992)
 Barbara Paul Robinson & Charles Raskob Robinson Fund (1996)
 Marguerite P. Roche Fund (1972)
 Laura Spelman Rockefeller Memorial Fund (1928)
 Mary French Rockefeller Fund (2000)
 Rogers Family Fund (1995)
 Sarah & Harry Rogers Fund (1994)
 Jack & Leslie Ronder Fund (1999)
 Dr. Joseph Richard Rongetti Scholarship Fund (1996)
 Hugh & Katherine Roome Charitable Fund (2003)
 Curtis Roosevelt Fund (1989)
 Jonathan F.P. Rose & Diana Calthorpe Rose Fund (1996)
 Richard Rose Fund (1981)
 Rose/Margulies Fund (1997)
 Jack & Mae Rosenberg Fund (1997)
 Rosenfeld Family Fund (1986)
 June S. Rosenfeld Memorial Fund (1989)
 Susan Rosenfeld Fund (1998)
 John P. Rosenthal Fund (1973)
 Ida Ross Memorial Fund (1986)
 Lila & Arnold S. Ross Charitable Fund (2000)
 Rossetti Family Fund (2001)
 Clara Lewisohn Rossin Trust (1949)
 Edmond de Rothschild Fund (2000)
 Lynn Forester de Rothschild Fund (2002)
 Roxbury Fund (1997)
 *RSVP—For the Children Fund (2006)
 Lisa Cordell Rubin Fund (1995)
 Samuel N. & Charlotte Rubin Fund (1996)
 Frederic A. & Susan A. Rubinstein Fund (1986)
 Harry J. Rudick Fund (1988)
 Rue de Reves Fund (1987)
 Thomas Ruotolo Scholarship Fund (1985)
 William D. Russell Fund (1971)
 *Rx Foundation Fund (2006)
 Rye Scholarship Fund (1977)

S
 Myrten G. & Lillian V. Saake Memorial Fund (1994)
 Daniel Saccomanno Fund (1996)
 Bonnie & Peter Sacerdote Family Fund (1975)
 Samuel Sacks Funds (1970)
 Safer-Fearer Fund (1998)
 *Nola J. Safro Fund (2006)
 Dr. Abraham & Shirley Saifer Fund (1992)
 Herbert & Nancy Salkin Fund (1975)
 Samaritropia Fund (1995)
 Nathan & Nancy Sambul Fund (1997)
 Stacey Sanders Fund (2001)
 Sarah A. Sanford Fund (1949)
 Linda U. Sanger Charitable Fund (1999)
 Louis & Carolyn Sapir Family Fund (1998)
 Michael Sasse Charitable Fund (2001)
 James & Sarah Scanlon Fund (2003)
 Philip Scaturro Fund (2000)
 Brigitte Holmen Schattenfeld Family Fund (2002)
 Marielle J. Scheff Fund (2002)
 Scheide Fund (1971)
 Schein Family Memorial Fund (1987)
 Henry Schein Inc, Company Fund (2003)
 Jacob H. Schiff Memorial (1924)
 Jacqueline Schiller Fund (1998)
 Max G. Schlapp Mental Hygiene Fund (1979)
 Schlegel Family Fund (2005)
 Shain Schley Fund (1999)
 Grace & Edith Schneider Memorial Fund (1949)
 Schneiderman Family Fund (1994)
 Anna E. Schoen-Rene Fund (1942)
 Scholarships for Kids Fund (1993)
 Anthony & Elizabeth Schulte Fund (1997)
 John W. Schulz Memorial Fund (2000)
 Alan D. Schwartz Family Fund (2000)
 Stephen A. Schwarzman Fund (1999)
 Robert J. Schweich Fund (1981)
 Alfred H. Schwendtner Fund (1996)
 Walter D. Scott Fund (1985)
 Gail Aidinoff Scovell & Edward P. Scovell Fund (1986)
 Sea Cliff Fund (1986)
 Seal Point Foundation (1966)
 Sealion Charitable Fund (1998)
 Eleanor T. Seidel Memorial Fund (1984)
 Selby/Vail Fund (2001)
 Mamie Seller Memorial Fund (1978)
 Jerome & Joan Serchuck Fund (1971)
 Alfred M. Serex Fund (1999)
 J. Walter & Helen C. Severinghaus Fund (1988)
 William H. Seward, Jr. Fund (1962)
 Shah-Domenicali Family Fund (2005)
 Harris Shapiro Fund (1996)
 Shaw Foundation Fund (1964)
 Shearman & Sterling Fund (1999)
 Sheinberg Family Fund (1996)
 Annette & William Sherman Fund (1999)
 Lola J. Sherman Fund (1937)
 *Fannie Sherr Fund (2006)
 Sherrow Family Fund (1998)
 Jack & Dorothy Shulman Memorial Fund (1984)
 Catherine & Andrew Sidamon-Eristoff Family Fund (2003)
 Elizabeth Sidamon-Eristoff Fund (2003)
 Simon Sidamon-Eristoff Fund (2003)
 Siebert Family Fund (2001)
 Jayne M. Silberman Fund (1986)
 Lois & Samuel Silberman Building Fund (1992)
 Lois & Samuel Silberman Charitable Fund (1993)
 Lois & Samuel Silberman Grant Fund (1992)
 Ruth & Marvin Silberman Memorial Fund (1967)
 Al & Rosa Silverman Fund (1994)
 Alan Silverman Fund (2004)
 *Lynn Silverman Family Fund (2006)
 Marty & Dorothy Silverman Fund (2001)
 Arlene B. Simon Fund (1986)
 Suzanne Cohn Simon Fund (2003)
 Simpson Thacher & Bartlett Fund (1995)
 Cecile Singer Fund (2000)
 Stephen Sirkin Memorial Fund (1984)
 Skilen Fund (1996)
 *Skipjack Fund (2006)
 *Randy Slifka Philanthropic Fund (2006)
 Deborah A. Smith Fund (1986)
 Jacqueline & Albert Smith Fund (1993)
 Jeffrey R. Smith Memorial Scholarship Fund (2001)
 Richard L. Snyder Fund (1991)
 Laura Solinger Fund (1993)
 L. & S. Soll Fund (1998)
 David & Nancy Solomon Fund (2000)
 Hannah Fox Solomon Fund (2002)
 Solow Foundation Philanthropic Fund (1988)

Abe, Lena & Irin Soskis Memorial Fund (1984)
 Abe, Lena & Irin Soskis Memorial Fund No. 2 (1985)
 Fernando Soto, Jr. Fund (2000)
 Alireza Soudavar Fund (1986)
 Mammadi Soudavar Memorial Fellowship Fund (1982)
 Patricia & Michael Sovern Fund (2003)
 Rose M. Soybel Rose Garden Fund (1997)
 Carol & Charles Spaeth Memorial Fund (1986)
 Special Fund No. 11 (1968)
 Special Fund No. 14 (1950)
 Special Fund No. 20 (1962)
 Tivy Spence Achievement Fund (1999)
 Arthur L. Spencer Memorial Scholarship Fund (2002)
 Sperry Van Ness/Joe French Endowment Fund (2004)
 Marion R. Spinnler Education Fund (1970)
 *Spurlino Family Fund (2006)
 Squadron A Fund (1983)
 Nicholas Warren Squires Family Fund (1991)
 Squirrel Fund (2005)
 Stack Family Fund (1994)
 Stadler Fund (1997)
 Ilma Stafford-Greene Fund (1977)
 Alma Timolat Stanley Fund (1987)
 Ruth & Frank Stanton Fund (1973)
 Starry Night Fund (1998)
 Stars & Stripes Fund (1988)
 Betty J. Stebman Fund (2003)
 Steinberg Charitable Fund (2005)
 Albert & Marie Steinert Fund (1991)
 Chris Stemland Fund (1991)
 Stephens Bequest (1942)
 Sterling Fund (1985)
 Henry J. Stern & Robert F. Wagner, Jr. Fund (1982)
 Ettie Stettheimer Memorial Fund (1960)
 Gertrude Stewart Memorial Scholarship Fund (1971)
 Kate H. Stiassni Fund (1999)
 Stonehome Fund (1956)
 Barnard Sachs Straus Fund (1986)
 Edward K. Straus Fund (1951)
 Stronach-Buschel Fund (1995)
 Stroock Spirit of New York Fund (2001)
 Carole Stupell Travel Award Program (2003)
 Subia Fund (2004)
 Sunrise Fund (1996)
 Billy Sunshine Memorial Scholarship Fund (1985)
 Surrogate's Court Fund (1991)
 Robert J. Suslow Fund (1998)
 Kelso F. & Joanna L. Sutton Fund (1998)
 R. Swayze Gay & Lesbian Youth Fund (1996)
 John & Devereux Swing Philanthropy Fund (1998)

T

Hazaros Tabakoglu Scholarship Fund (1994)
 Robert A. Taft Institute of Government Trust (1969)
 Peter Talbert Charity Fund (1999)
 W. Pike Talbert Charitable Fund (1986)
 James Talcott Fund (1974)
 Helen S. Tanenbaum Fund (1954)
 Helen S. Tanenbaum Award Fund (2004)
 Nicki & Harold Tanner Fund (2001)
 Rachel Tanur Memorial Fund (2002)
 Dave Taylor Memorial Fund (1995)
 William J. Taylor Fund (1939)
 TechnoServe Fund (1993)
 William Clark Terry Scholarship Fund (1983)
 Ethel & Dominick Tesoriero Charitable Fund (2005)
 Thackeray Fund (2005)
 Third Millennium Fund (1973)

Thomas Fund (1995)
 Thomas COPD Fund (1996)
 Marvin & Doris Thomas Fund (1996)
 Grandchildren of Fred & Florence Thomases Fund (1999)
 Judith Dana Thorne Fund (1990)
 Nathan C. & Margaret Y. Thorne Fund (2004)
 Nathan & Nicholas Thorne Fund (2003)
 Olaf J. & Margaret L. Thorp Fund (1987)
 316th Association Memorial Fund (1994)
 316th Infantry Monument Fund (1969)
 Three Ninety Fund (1972)
 George H. & Elizabeth E. Tilghman Fund (2004)
 Nancy H. Tilghman Fund (1999)
 Jane M. Timken Charitable Fund (1987)
 Tisser Family Fund (1998)
 Tobacco Pink Fund (1977)
 Carol H. Tolan Fund (1997)
 Nathaniel & Sarah Tooker Fund (1972)
 Tor Family Fund (1999)
 Arnold & Caren Toren Fund (2004)
 Raymond & Beverly Tower Fund (1997)
 Town Hill School Fund (1993)
 Tozer Family Fund (1987)
 Traer Fund (1976)
 Charles Welford Travis Trust (1981)
 Trevor Fund (1986)
 Harry D. Triantafillu Fund (1986)
 Trinity Chapel Home Fund (1960)
 Tripod Fund (1979)
 Jean L. & Raymond S. Troubh Family Fund (1998)
 John B. & Louisa S. Troubh Fund (1993)
 Elizabeth D. Trussell Fund (2005)
 Turanski Family Compassionate Acceptance Fund (2004)
 Turner Fund (1999)
 Christopher Turner & Tracy Turner Charitable Fund (2005)
 Paul N. Turner Bequest (1960)
 Twenty-First Century Fund (1981)
 Charles P. Twichell Fund (1995)
 Two Kids from the Bronx Fund (1986)
 2005 Charitable Trust Fund (2005)

U

Beth M. Uffner Arts Fund (1998)
 Don & Patricia Underwood Fund (2003)
 United Way Humancare Fund (1984)

V

Vacolo Fund (2000)
 Gilad Vaday Fund (2000)
 Anne van Biema Fund (1996)
 van Hengel Family Fund (1980)
 Edward & Sally Van Lier Fund (1988)
 Lottie Grace Vanderveer Fund (2003)
 Lottie Grace Vanderveer Fund for Saranac Lake High School (2003)
 Vaughan/Winton Fund (1995)
 Nancy Veith Fund (2003)
 Lillian Vernon Foundation Fund (2001)
 Nicholas M. & Susan J. Verrastro Memorial Scholarship Fund (1998)
 Rudolf & Anna Marie Vetter Memorial Fund (1977)
 R.G. Viault Family Fund (1999)
 Viburnum Trilobum Fund (2003)
 Anna Glen Butler Vietor Memorial Fund (2005)
 John L. Vigorita, M.D. Memorial Fund (1991)
 *Vimont Fund (2006)
 Vital Projects Fund (1977)
 Vo Van Jacques & Thai Thi Tam Memorial Fund (2004)

David & Johanna Voell Family Fund (2001)
Gregory & Elyzabeth Voell Family Fund (2001)
Jeffrey & Stephanie Voell Family Fund (2001)
Richard & Virginia Voell Family Fund (1986)
*Vogel Family Charitable Fund (2006)
Hans A. Vogelstein Memorial Scholarship Fund (1982)
Mrs. Claus von Bulow Fund (1971)
Enders M. Voorhees Fund (1973)

W

*Michael & Marcy Wade Family Fund (2006)
Marian Marcus Wahl Memorial Fund (1985)
Walker Fund (2003)
Bayard Walker, Jr. Charitable Fund (2003)
Julia & Carter Walker Fund (1997)
Walker-Pratt Family Fund (2003)
J. Miller Walker Fund (2005)
Wallace Education Fund (1988)
Wallace Special Projects Fund (1991)
DeWitt Wallace New York Hospital Fund (1984)
DeWitt Wallace St. Christopher's School Fund (1974)
DeWitt Wallace Youth Travel Enrichment Fund (1982)
Lila Acheson Wallace Theater Fund (1984)
Frederick J. & Theresa Dow Wallace Fund (1977)
Theresa Dow Wallace Scholarship Fund (1975)
Waller-Davidson Fund (1980)
Anthony W. & Lulu C. Wang Fund (1996)
N.T. & Mabel Wang Charitable Fund (2004)
Moritz & Charlotte Warburg Memorial (1925)
*Elizabeth & Andrew Ward Charitable Fund (2006)
David Warfield Funds (1951)
David & Mary Warfield Funds (1973)
Mary Warfield Fund (1971)
Bradford A. & Nancy H. Warner Fund (1985)
Watcha Fund (1988)
Wattles Family Charitable Trust Fund (1981)
Alice W. Wattles Fund (1974)
James Howard Wattles Fund (1947)
Samuel Hughes Watts Memorial Fund (1973)
Weber Family Fund (2002)
Damon Weber Fund (2005)
Weigel Family Fund (1999)
Karl & Vally Weigl Fund (1980)
John L. Weinberg Family Fund (2003)
Edna & Frederick Weingarten Fund (1984)
Seymour & Kathleen Weingarten Fund (2005)
Seymour & Rose Weinstock Fund (1999)
Weintz Family Foundation (1980)
Weintz Family Fund (1995)
Mabel W. Weir Trust (1978)
Nathan H. Weiss Memorial Fund (1999)
Rebecca & Nathan Weiss Fund (1997)
WellMet Group Fund (1999)
Wellsford Charitable Fund (2000)
William E. Welsh Jr. Family Fund (1978)
West End Road Fund (1988)
Herbert B. West Fund (1989)
Wheeler Fund (1992)
Betty Wheeler Fund (1991)
Letitia M. Whipp Memorial Fund (1972)
Bill Whitehead Award Fund (1993)
Edward B. Whitney Fund (1986)
Frederic J. Whiton Fund (1960)
Wiccopee Fund (1986)
Mary L. Wiener/Sanford M. Cohen Fund (1986)
Stephen R. Wiener Fund (1997)
Jeremy Wiesen Fund (1985)
Carleton Wiggins & Donald Bain Trust (1982)

Donna Bain Wiggins Trust (1982)
Robert O. Wilder Fund (1989)
Mason Wiley Memorial Fund (1995)
Cynthia & Alan Wilkinson Fund (2003)
Henry K. S. Williams Trust No. 1 (1944)
Henry K. S. Williams Trust No. 2 (1944)
Mildred Anna Williams Fund (1940)
Oscar Williams & Gene Derwood Fund (1971)
Robert I. Williams Fund (1996)
Sarah Williams & Andrew Kimball Fund (1999)
Bruce R. Williamson Fund (1998)
Douglas Williamson Fund (1997)
Willkie Farr & Gallagher Fund (1984)
Sam Wilner Fund (1997)
John H. T. Wilson Fund (1988)
William Ross Reid Wilson Memorial Fund (1991)
Wilton-Risdon Fund (1994)
Wiltwyck School Fund (1988)
Wind Down Fund (1989)
Winnie Knowe Fund (2003)
Windsor Fund (1977)
Jay Winston Scholarship Fund (1997)
John Winston Fund (1999)
Winterer Fund (1986)
Winthrop Family in America Fund for Groton Church (1982)
John Winthrop Fund (1970)
Margaret S. Winthrop Fund (1972)
Leone Scott Wise Fund (1986)
Witches' Fund (1998)
Witkin Family Fund (1988)
Kate & Richard Witkin Family Fund (1988)
Joanne Witty & Eugene Keilin Fund (1986)
C. Theodore Wolf & Francis X. Decolator II Fund (1996)
Ross Wollen Charitable Fund (1997)
Wood Thrush Fund (2004)
World Trade Center Hoboken Memorial Scholarship Fund (2002)
World-Wide Fund (2002)
World-Wide Holdings, Inc. Fund (2002)
Clara Kennon Worley Fund (1973)
Worth Fund (1992)
Wray Family Fund (1986)
Thomas & Maureen Wright Family Fund (2005)
Seymour B. Wurzler Bequest (1963)
Thomas H. Wyman Family Fund (2002)

Y

J. Ernest Grant Yalden Memorial Fund (1956)
Yamin Family Fund (1994)
Yancey Family Fund (1986)
Yaseen Lectures on the Fine Arts (1971)
Samuel McC. & Lizora M. Yonce Fund (1986)
You Can't Take It With You Fund (1986)
H. R. Young & Betty G. Young Fund (1979)
Nancy Young & Paul B. Ford, Jr. Fund (1986)
Thomas & Elsie Young Fund (2000)
Stephane Yulita Children's Fund (1989)
Stephane Yulita & Inge Kadon Fund (2000)

Z

Judith & Stanley Zabar Fund (1993)
John & Catherine Zacharias Family Fund (2003)
Eileen E. Zaglin Scholarship Fund (1993)
Steve Zang Fund (1999)
Zimmerman Family Fund (2002)
Joel Zimmerman Fund (1996)
Zofnass/Ring Family Fund (1991)
ZPM Fund (1986)

grants in 2006

A

Abyssinian Development Corporation, \$30,000
Academy of American Poets, \$29,650
Academy of Mount Saint Ursula, \$50,000
Academy of Our Lady of Good Counsel, \$34,152
Achievement First (Conn.), \$250,000
Ackerman Institute for the Family, \$50,880
Actors' Fund of America, \$60,250
Adirondack Community Trust, \$251,900
Adirondack Council, \$20,050
Adirondack Historical Association, \$20,950
Adventure Unlimited (Colo.), \$800,000
Advocates for Children of New York, \$346,700
Africa-America Institute, \$30,100
African-American Media Network, \$25,000
African Services Committee, \$80,000
Africare (D.C.), \$32,500
AFS-USA, \$376,600
Agnes Scott College (Ga.), \$22,500
AIDS Center of Queens County, \$30,000
AIDS Community Research Initiative of America, \$25,500
Albert Einstein College of Medicine of Yeshiva University, \$103,000
Albert G. Oliver Program, \$35,000
Alianza Dominicana, \$56,250
Alliance for Quality Education, \$265,000
Alliance to Protect Nantucket Sound (Mass.), \$200,000
Alpha Workshops, \$25,000
Alvin Ailey Dance Foundation, \$55,000
Alzheimer's Disease & Related Disorders Association (Ill.), \$32,350
American Academy of Achievement (D.C.), \$25,000
American Academy of Arts & Sciences (Mass.), \$32,000
American Cancer Society Eastern Division, \$61,860
American Civil Liberties Union Foundation, \$28,990
American Civil Rights Education Services, \$25,000
American Dental Association Health Foundation (Ill.), \$75,000
American Farm School, \$52,000
American Farmland Trust (D.C.), \$124,950
American Foundation for AIDS Research, \$110,750

American Friends of the Hebrew University, \$72,400
American Friends of Meir Medical Center (Fla.), \$100,000
American Friends Service Committee, \$119,050
American Friends of Tel Aviv University, \$40,000
American Heart Association, Heritage Affiliate, \$320,270
American Heart Association Westchester/Putnam Region, \$32,890
American Hospital of Paris Foundation, \$25,000
American Jewish Committee, \$132,650
American Jewish World Service, \$39,252
American Museum of Natural History, \$190,515
American Patrons of the Tate Gallery Foundation, \$25,000
American Prospect (Mass.), \$350,000
American Red Cross in Greater New York, \$166,380
American Red Cross/National Headquarters (D.C.), \$32,750
American Rivers (D.C.), \$176,000
American Society for the Prevention of Cruelty to Animals, \$75,660
American University in Cairo, \$25,000
Americans for Oxford, \$34,500
Alliances for UNFPA, \$66,050
Amherst College (Mass.), \$56,571
Amigos del Museo del Barrio, \$50,500
Amnesty International of the USA, \$22,125
Anchor, \$74,575
Andrews School (Ohio), \$350,000
Anti-Defamation League of B'nai B'rith, \$98,900
Appalachian Community Fund (Tenn.), \$275,000
Arab American Association of NY, \$30,000
Arab-American Family Support Center, \$60,000
Arcadia University (Pa.), \$55,000
Arthritis Foundation, New York Chapter, \$52,050
Arthur Ashe Institute for Urban Health, \$103,500
Arts Horizons, \$30,000
ArtsConnection, \$22,000
Asia Society, \$28,520
Asian American Coalition for Children & Families, \$70,000
Asian American Legal Defense & Education Fund, \$30,000

Asian Americans for Equality, \$30,000
Association of the Bar of the City of New York Fund, \$107,400
Association for the Cure of Cancer of the Prostate (Calif.), \$77,900
Atlantic Theater Company, \$30,000
Audubon Nature Institute (La.), \$25,000
Avon Old Farms School (Conn.), \$30,500

B

Bach-Archiv Leipzig, \$500,000
Bailey House, \$25,000
Baldwin-Wallace College (Ohio), \$24,000
Ballet Theatre Foundation, \$243,620
BAM Local Development Corporation, \$60,000
Bank Street College of Education, \$179,593
Bargemusic, \$56,200
Barium Springs Home for Children (N.C.), \$90,990
Barnard College, \$55,950
Barrow Group, \$75,000
Bay Shore High School Alumni Association, \$30,000
Bay Shore Schools Arts Education Fund, \$25,000
Bedford Stuyvesant Restoration Corp., \$60,000
Beit Shalom, \$40,000
Bennington College (Vt.), \$61,175
Berkshire School (Mass.), \$257,500
Beth Israel Medical Center, \$200,300
Bethany House of Northern Virginia (Va.), \$50,000
Bethel Mission Station Church, \$23,000
Bethesda Missionary Baptist Church of Jamaica, \$25,000
Beyond Pesticides/National Coalition Against the Misuse of Pesticides (D.C.), \$65,000
Big Apple Circus, \$35,000
Black Leadership Commission on AIDS, \$75,000
BoardSource (D.C.), \$51,000
Boat People SOS (Va.), \$47,000
Boston University (Mass.), \$68,530
Bowdoin College (Maine), \$39,400
Bowne House Historical Society, \$50,500
Boy Scouts of America, Greater New York Councils, \$127,670
Boy Scouts of America, Theodore Roosevelt Council, \$20,250
Boys' Club of New York, \$173,300

Boys & Girls Club of Geneva, \$50,000
Boys & Girls Harbor, \$60,000
Brandeis University (Mass.), \$77,500
Brick Presbyterian Church, \$110,000
Bridge Academy (Conn.), \$70,000
Bridge Fund of New York, \$40,000
Bridgehampton Child Care & Recreational Center, \$30,350
Bridgeport Child Advocacy Coalition (Conn.), \$75,000
Bridgeport Hospital Foundation (Conn.), \$50,000
Brighton Neighborhood Association, \$40,000
British Schools & Universities Foundation, \$51,250
Broadway Housing Communities, \$36,200
Bronx Addiction Services Integrated Concepts Systems, \$117,000
Bronx Council on the Arts, \$60,000
Bronx Defenders, \$128,300
Bronx Jewish Community Council, \$47,000
Brooklyn Academy of Music, \$40,000
Brooklyn Arts Exchange, \$100,000
Brooklyn Bar Association Volunteer Lawyers Project, \$40,000
Brooklyn Botanic Garden Corporation, \$23,400
Brooklyn Bridge Park Conservancy, \$39,000
Brooklyn Children's Museum Corporation, \$93,000
Brooklyn College Foundation, \$26,500
Brooklyn Conservatory of Music, \$54,000
Brooklyn Education Collaborative, \$100,000
Brooklyn Greenway Initiative, \$210,000
Brooklyn Historical Society, \$42,750
Brooklyn Legal Services Corporation A, \$120,500
Brooklyn Museum, \$182,815
Brooklyn Philharmonic Symphony Orchestra, \$55,250
Brooks School (Mass.), \$139,500
Brown University (R.I.), \$418,400
Brunswick School (Conn.), \$105,000
Bryant University (R.I.), \$202,280
Bryn Mawr College (Pa.), \$48,000
Buckley School, \$46,425
Builders for the Family & Youth of the Diocese of Brooklyn, \$47,000
Burden Center for the Aging, \$50,250
Bushwick Housing Independence Project, \$40,000
Business Council for International Understanding, \$38,000
Business Executives for National Security (D.C.), \$25,000
Business Outreach Center Network, \$75,000

C
Cambridge in America, \$20,400
Campaign for Fiscal Equity, \$220,000
Campaign for the Westchester Children's Museum, \$25,000

Cancer Care, \$737,470
Cancer Research Institute, \$31,750
Canterbury School (Conn.), \$188,000
Caramoor Center for Music & the Arts, \$49,320
CARE USA Northeast Region, \$47,760
Career Gear, \$40,000
Carnegie Hall Society, \$60,810
Carpenter's Boat Shop (Maine), \$25,400
CAST Resources (Mass.), \$475,000
Catholic Charities Community Services, Archdiocese of New York, \$131,500
Catholic Charities of the Diocese of Rockville Centre, \$53,000
Catholic Relief Services of the U.S. Catholic Conference (Md.), \$61,820
Catholic Schools Foundation (Mass.), \$25,000
Cause Effective, \$52,000
Cedars of Marin (Calif.), \$1,050,000
Center for Alternative Sentencing & Employment Services, \$30,350
Center for American Progress (D.C.), \$280,400
Center for Arts Education, \$21,500
Center for Community Alternatives, \$68,500
Center for Community Change (D.C.), \$124,600
Center for Employment Opportunities, \$60,000
Center for Governmental Research, \$60,000
Center for Public Integrity (D.C.), \$22,800
Center for Reproductive Rights, \$76,100
Center for Spiritual Exchange, \$35,000
Center for Strategic & International Studies (D.C.), \$35,000
Center for Traditional Music & Dance, \$53,600
Central American Legal Assistance, \$50,000
Central American Refugee Center-CARECEN NY, \$22,275
Central Park Conservancy, \$184,950
Centurion Ministries (N.J.), \$500,000
Century Foundation, \$700,000
Chabad of Glen Cove, \$26,000
Chamber Music Society of Lincoln Center, \$57,400
Chapin School, \$37,750
Chatham United Methodist Church (N.J.), \$32,500
Chesapeake Bay Foundation (Md.), \$90,000
Chess-in-the-Schools, \$161,500
Chhaya Community Development Corporation, \$40,100
Child Care Council of Westchester, \$165,000
Child Welfare Organizing Project, \$38,500
Childcare Learning Centers (Conn.), \$34,000
Children, Incorporated (Va.), \$26,500
Children's Aid Society, \$85,730
Children's Storefront, \$31,500
Children's Village, \$21,000
Chinatown Manpower Project, \$62,000
Chinese Staff & Workers' Association, \$40,000
Choate Rosemary Hall Foundation (Conn.), \$157,300

Christ Hospital Foundation (N.J.), \$47,964
Christodora, \$67,360
Christ's Church of Rye, \$40,000
Church Avenue Merchants Block Association, \$50,000
Church of the Heavenly Rest, \$34,700
Church of St. Paul & St. Andrew, \$25,000
Circumpolar Conservation Union (D.C.), \$50,000
Citiwide Harm Reduction Program, \$30,000
Citizens Advice Bureau, \$108,146
Citizens Budget Commission, \$32,650
Citizens' Committee for Children of New York, \$52,900
Citizens for NYC, \$193,000
Citizens Union Foundation of the City of New York, \$72,000
City Center 55th Street Theater Foundation, \$122,000
City College Fund, \$27,000
City Harvest, \$134,275
City Lore, \$250,250
City Seminary of New York, \$70,000
City University of New York, \$248,250
City of White Plains, \$40,000
City Year (Mass.), \$122,600
Citymeals-On-Wheels, \$122,800
Clarkson University, \$85,000
Classical America, \$42,000
Clean Production Action, \$75,000
William J. Clinton Presidential Foundation (Ark.), \$25,000
Closter Volunteer Ambulance & Rescue Corps (N.J.), \$25,000
Coalition for the Homeless, \$498,950
Coalition of Voluntary Mental Health Agencies, \$50,000
Cold Spring Harbor Laboratory, \$190,030
College Summit (D.C.), \$26,500
Collegiate School, \$62,750
Colorado College (Colo.), \$60,250
Columbia University, \$697,040
Columbia University, College of Physicians & Surgeons, \$557,500
Columbia University, Graduate School of Business, \$250,000
Columbia University, Graduate School of Journalism, \$77,430
Columbia University, Mailman School of Public Health, \$204,000
Columbia University, School of Nursing, \$125,000
Commission on the Public's Health System, \$45,400
Committee for Economic Development (D.C.), \$51,000
Committee to Protect Journalists, \$25,000
Common Cents New York, \$40,250
Common Good Institute, \$50,000

Commonweal (Calif.), \$81,000
Communications Leadership Institute (Calif.), \$45,000
Community Church of Douglaston, \$25,000
Community Foundation for the National Capital Region (D.C.), \$34,000
Community Foundation for Palm Beach & Martin Counties (Fla.), \$31,500
Community Health Action of Staten Island, \$50,000
Community Health Care Association of New York State, \$150,000
Community of the Cross Ministries (Conn.), \$129,584
Community Resource Exchange, \$120,520
Community Service Society of New York, \$289,830
Community Studies of New York, \$50,000
Community Training & Assistance Center (Mass.), \$30,000
Community Voices Heard, \$37,000
Compassion & Choices of New York, \$20,250
Concord Coalition Corp (Va.), \$56,100
Congregation Emanu-El of the City of New York, \$36,985
Congregation Or Zarua, \$25,000
Congregation Rodeph Sholom, \$51,018
Connecticut Public Broadcasting (Conn.), \$25,150
Conservation International (Va.), \$124,500
Consortium of New York Geriatric Education Centers, \$80,000
Consumers Union of the United States, \$52,000
Cooke Center for Learning & Development, \$103,850
Co-op America Foundation (D.C.), \$28,400
Cooper Union for the Advancement of Science & Art, \$49,700
Coral Bay School, \$30,000
Cornell University, \$113,279
Council for Excellence in Government (D.C.), \$50,000
Council on Foreign Relations, \$4,272,000
Council on Foundations (D.C.), \$44,700
Council of Peoples Organization, \$40,000
Council for Secular Humanism, \$62,000
Court Appointed Special Advocates (CASA), \$35,250
Covenant House New York, \$22,350
Creative Capital Foundation, \$50,000
Credit Where Credit Is Due, \$40,000
Crippled Children's Hospital Foundation (Tenn.), \$90,990
Crossnore School (N.C.), \$90,990
CSC Repertory, \$92,050
Cuban Artists Fund, \$20,750
Cure Alzheimer's Fund (Mass.), \$31,000
Cypress Hills Local Development Corporation, \$40,000
Cystic Fibrosis Foundation (Md.), \$46,100
Cystic Fibrosis Foundation, Greater New York Chapter, \$37,000

D
Dalton School, \$223,700
Damayan Migrant Workers Association, \$40,000
Dana-Farber Cancer Institute (Mass.), \$37,500
Dartmouth College (N.H.), \$2,128,190
De La Salle Academy, \$27,250
Deafness Research Foundation (D.C.), \$73,000
DeCordova Museum & Sculpture Park (Mass.), \$30,000
Deettee Holden Cummer Museum Foundation (Fla.), \$25,000
Defenders of Wildlife (D.C.), \$108,750
Denison University (Ohio), \$200,500
Devereux Glenholme (Conn.), \$47,500
Diocese of Helena, Montana (Mont.), \$260,000
Direct Relief International (Calif.), \$36,000
Directions For Our Youth, \$60,000
Dixie College Foundation (Utah), \$25,000
Doctors without Borders U.S.A. \$119,910
Doe Fund, \$27,200
The Door-A Center of Alternatives, \$119,000
Dorot, \$21,960
DOVA, \$93,150
Drisha Institute for Jewish Education, \$20,126
Duke University (N.C.), \$126,650
Dwa Fanm, \$40,000
Dwight School Foundation, \$150,000

E
E. Monte Motion, \$106,000
EARTHJUSTICE (Calif.), \$23,150
East Harlem Tutorial Program, \$24,550
Eastern Farm Workers Association, \$25,000
Ecclesia Ministries (Mass.), \$25,500
Echoing Green Foundation, \$500,000
Ecology Center (Mich.), \$75,000
Economic Club of New York, \$30,000
Education Development Center (Mass.), \$25,000
Education Through Music, \$70,000
Education & Work Consortium, \$142,000
Educational Broadcasting Corporation/Channel 13, \$246,830
Educational Priorities Panel, \$30,000
Educators for Social Responsibility Metropolitan Area, \$53,000
Edwin Gould Services for Children & Families, \$310,000
El Barrio's Operation Fightback, \$50,000
El Centro de Hospitalidad, \$40,000
Eldridge Street Project, \$25,000
Elizabeth Glaser Pediatric AIDS Foundation (Calif.), \$35,000
Empire Justice Center, \$45,000
Empire State Pride Agenda Foundation, \$40,000
Endeavor Initiative, \$65,313
Environmental Advocates of New York \$56,070
Environmental Defense, \$210,000
Episcopal Charities, \$25,000
Episcopal Social Services of New York, \$34,720
Equality Now, \$75,000
ERASE Racism, \$156,800
Esperanza del Barrio, \$60,000
Ethical Culture Fieldston School, \$51,100
Evidence, \$75,000
Exodus School, \$31,100
Exodus Transitional Community, \$242,000

F
Facing History & Ourselves National Foundation (Mass.), \$140,050
Fairfield County Community Foundation (Conn.), \$1,896,400
Families for Freedom, \$40,000
Family Centers (Conn.), \$56,100
Family & Children's Association, \$146,000
Family Service League of Suffolk County, \$45,225
Family Service of Westchester, \$79,725
Family YMCA at Tarrytown, \$35,000
Farms for City Kids Foundation, \$280,000
F. D. Barstow Memorial School (Vt.), \$25,000
Federation of Protestant Welfare Agencies, \$36,000
Fenway Community Health Center (Mass.), \$25,000
Fessenden School (Mass.), \$50,000
Fifth Avenue Committee, \$35,000
Fiji Theater Company, \$75,000
Film Society of Lincoln Center, \$73,225
FilmAid International, \$205,260
First Congregational Church (N.J.), \$25,000
First Congregational Church of Westfield (N.J.), \$25,000
Fiscal Policy Institute, \$75,000
Flatbush Development Corporation, \$40,000
Folksbiene Yiddish Theatre, \$84,250
Food Bank for New York City, Food for Survival, \$234,550
Food-People Allied to Combat Hunger, \$20,450
FoodChange, \$50,000
Fordham University, \$47,305
Fordham University, Graduate School of Social Service, \$165,000
Forest Ethics (Calif.), \$100,000
Forest Hills Community House, \$40,000
Forman School (Conn.), \$200,000
Fortune Society, \$34,710
47 Palmer Inc. (Mass.), \$25,000
Foundation for Dance Promotion, \$85,500
Foundation Fighting Blindness (Md.), \$35,250
Fountain House, \$65,290

Francis J. Logan, Jr. Foundation, \$25,000
 Franklin Medical Center (Mass.), \$35,530
 Frederick Douglass Academy, \$32,500
 Freer Gallery of Art of the Smithsonian Institution (D.C.), \$57,180
 Fresh Air Fund, \$118,078
 Frick Collection, \$121,160
 Friends of Alice Austen House, \$29,000
 Friends of Bronx Preparatory Charter School, \$25,000
 Friends of the High Line, \$332,800
 Friends of Hudson River Park, \$105,100
 Friends of Khmer Culture (Conn.), \$28,500
 Friends of the New York City Fire Department Collection, \$110,000
 Friends & Relatives of Institutionalized Aged, \$40,000
 FSH Society (Mass.), \$55,000
 Fund for Public Health in New York, \$600,000
 Fund for Public Schools, \$135,875
 Fund for Social Change, \$130,300
 Futures & Options, \$80,000

G

Gay Men of African Descent, \$80,450
 Gay Men's Health Crisis, \$186,250
 George School (Pa.), \$103,100
 Georgetown University (D.C.), \$43,528
 Getting the Word Out, \$50,000
 Ghetto Film School, \$55,000
 Girl Scout Council of Greater New York, \$27,150
 Girls Incorporated, \$26,500
 Glimmerglass Opera, \$48,250
 Global Fund for Children (D.C.), \$50,000
 God's Love We Deliver, \$109,350
 Good Samaritan Hospital Foundation, \$52,500
 Good Shepherd Services, \$50,000
 Governor's Committee on Scholastic Achievement, \$101,000
 Grace Church of Brooklyn Heights, \$28,000
 Grace Church Community Center, \$30,600
 Grace Church School, \$30,000
 Grandfather Home for Children (N.C.), \$90,990
 Grassroots Environmental Education, \$38,350
 Greater Centennial Community Development Corporation, \$40,000
 Greater Newark Conservancy (N.J.), \$55,000
 Greater Yellowstone Coalition (Mont.), \$25,500
 Green Blue Institute (Va.), \$74,000
 Greens Farms Academy (Conn.), \$25,750
 Greenwich Village Youth Council, \$31,000
 Groundwork Yonkers, \$105,000
 Grymes Memorial School (Va.), \$30,000
 Guild Hall of East Hampton, \$55,750

H

Habitat for Humanity International (Ga.), \$91,200
 Habitat for Humanity New York City, \$33,600

Hackley School, \$28,000
 Hagedorn Little Village School, \$25,000
 Hala: Rachel Nash Jerusalem Comprehensive Breast Clinic, \$25,000
 Hamilton College, \$63,050
 Hancock Shaker Village (Mass.), \$55,000
 Harlem Children Society, \$142,500
 Harlem Children's Zone, \$22,300
 Harlem Congregations for Community Improvement, \$40,000
 Harlem RBI Incorporated, \$73,250
 Harm Reduction Coalition, \$30,000
 Harvard College (Mass.), \$3,041,775
 Harvard University Medical School (Mass.), \$61,700
 Harvestworks, \$50,000
 Haverford College (Pa.), \$22,000
 Head-Royce School (Calif.), \$41,334
 Health Care Without Harm (Va.), \$50,000
 Health & Welfare Council of Long Island, \$45,200
 Healthcare Foundation of Cape Cod (Mass.), \$34,995
 Hebrew Home for the Aged at Riverdale, \$25,000
 Hebrew Union College-Jewish Institute of Religion, \$25,750
 Heifer Project International (Ark.), \$360,500
 Helen Keller International, \$52,250
 Helen Keller Services for the Blind, \$35,330
 HELP USA, \$40,000
 Helping Out People Everywhere, \$25,000
 Hempstead Boys & Girls Club, \$25,000
 Henry H. Kessler Foundation (N.J.), \$25,300
 Henry Street Settlement, \$68,050
 Herbert H. Lehman College Foundation, \$21,500
 Herstory Writers Workshop, \$25,500
 Highbridge Community Life Center, \$139,466
 Highlands Coalition (Pa.), \$150,000
 Hill School (Pa.), \$24,000
 Historic Districts Council, \$100,000
 Historic House Trust of New York City, \$51,000
 Historical Society of the Town of Greenwich (Conn.), \$81,000
 HIV/AIDS Health Care Advisory Panel, \$75,000
 Hofstra University, \$578,050
 Holy Cross Church (Fla.), \$100,000
 Holy Name Foundation, \$50,000
 Homeless Animal Rescue Team of Maine (Maine), \$31,000
 Hope College (Mich.), \$40,000
 Horace Mann School, \$24,450
 Horizons Foundation (Calif.), \$100,000
 Hospice Care Network, \$41,900
 Hospital for Special Surgery, \$73,250
 Hotchkiss School (Conn.), \$34,256
 Hour Children, \$42,400
 House Foundation for the Arts, \$75,000

Housing Conservation Coordinators, \$40,000
 Housing First!, \$25,000
 Howard Center for Human Services (Vt.), \$47,000
 H.T. Dance Company, \$25,000
 Hudson Guild, \$75,000
 Hudson Health Plan, \$25,000
 Hudson River HealthCare, \$25,300
 Hudson Valley Center for Contemporary Art, \$30,000
 Human Development Services of Westchester, \$78,250
 Human Rights Campaign (D.C.), \$100,200
 Human Rights First, \$122,100
 Human Rights Watch \$522,350
 Human Services Council (Conn.), \$25,000
 Human Services Council of New York City, \$50,000
 Hunter College of CUNY, \$54,600
 Hunter College of CUNY/Bellevue School of Nursing, \$259,960
 Hunter College Foundation, \$31,800

I

I Have a Dream Foundation, \$35,000
 IAA Education Program, \$68,000
 Immigration Equality, \$40,000
 Impact Young Lives Foundation (Mass.), \$25,000
 Improving Mentor Practices & Communication Techniques Coalition, \$100,000
 Independent Press Association (Calif.), \$55,000
 Indian Mountain School (Conn.), \$71,410
 inMotion, \$65,000
 Inner-City Scholarship Fund, \$141,650
 Institute for Agriculture & Trade Policy (Minn.), \$100,250
 Institute for Higher Education Policy (D.C.), \$150,000
 Institute of International Education \$32,450
 Institute for Rational Urban Mobility, \$222,860
 Institute for Student Achievement, \$50,000
 Interagency Council of Mental Retardation & Developmental Disabilities Agencies, \$46,000
 Interfaith Nutrition Network, \$143,500
 International Arts Relations, \$30,000
 International Council for Local Environmental Initiatives, USA (Calif.), \$100,000
 International Crisis Group, \$27,000
 International Documentary (Calif.), \$150,000
 International Longevity Center-USA, \$25,000
 International Rescue Committee, \$157,100
 International Social Service, United States of America Branch (Md.), \$81,520
 International Student Exchange Program (D.C.), \$100,000
 International Tennis Hall of Fame (R.I.), \$43,420
 International Women's Health Coalition, \$30,200
 International Youth Leadership Institute, \$35,000

Internationals Network for Public Schools,
\$100,000
Isabella Geriatric Center, \$75,000

J

Jackie Joyner-Kersey Foundation (Ill.), \$50,000
Jacob Burns Film Center, \$27,850
James Foundation, \$1,040,500
Jazz at Lincoln Center, \$281,500
Jewish Board of Family & Children's Services,
\$34,920
Jewish Center of the Hamptons, \$21,150
Jewish Child Care Association of New York,
\$61,700
Jewish Community Center of Harrison, \$25,000
Jewish Community Center of Staten Island,
\$26,300
Jewish Community Center on the Upper West
Side \$25,000
Jewish Community Council of Greater Coney
Island, \$40,000
Jewish Community Relations Council of New
York, \$80,000
Jewish Guild for the Blind, \$129,200
Jewish Museum, \$32,800
Johns Hopkins University (Md.), \$44,800
Joyce Theater Foundation, \$32,750
Juilliard School, \$64,750
Julia Dyckman Andrus Memorial, \$25,000
Just Food, \$37,000
Juvenile Diabetes Foundation International,
\$24,300

K

Kansas University Endowment Association
(Kans.), \$15,344
Keep Antibiotics Working: The Campaign to End
Antibiotic Overuse (Ill.), \$50,000
John F. Kennedy Center for the Performing Arts
(Va.), \$56,600
Robert F. Kennedy Memorial (D.C.), \$65,000
Kings Majestic Corporation, \$50,500
Kipp, \$37,000
Kneisel Hall (Maine), \$45,300

L

La Fuente, A Tri-State Worker & Community
Fund, \$60,000
LaGuardia Community College Education Fund,
\$125,000
Larchmont Avenue Church, \$26,000
Latin American Integration Center, \$70,000
Latino Commission on AIDS, \$75,000
LawHelp/NY, \$50,000
Lawrenceville School (N.J.), \$100,000
Lawyers Alliance for New York, \$45,000
Lawyers Committee for Civil Rights Under Law
(D.C.), \$25,250

League of Women Voters of the City of New York
Education Fund, \$40,000
Learning Leaders, \$37,000
Leg Up (Conn.), \$30,000
Legal Action Center of the City of New York,
\$80,000
Legal Aid Society, \$691,310
Legal Aid of West Virginia, (W.Va.), \$65,000
Legal Momentum, \$88,050
Legal Services for New York City, \$73,500
Lehman College Art Gallery, \$30,000
Lenox Hill Hospital, \$58,880
Lenox Hill Neighborhood House, \$59,800
Lesbian & Gay Community Services Center,
\$83,000
Let's Get Ready!, \$22,850
Leukemia & Lymphoma Society, \$60,250
Levindale Hebrew Geriatric Center & Hospital
\$500,000
Leviticus 25:23 Alternative Fund, \$25,000
Library of American Landscape History (Mass.),
\$25,000
Library Association of La Jolla (Calif.), \$25,000
Life Force: Women Fighting AIDS, \$30,000
Lighthouse International, \$512,630
Lincoln Center for the Performing Arts, \$142,860
Lincoln Clinic & Centre for Psychotherapy,
\$25,000
Lincoln Square Neighborhood Center, \$40,000
Literacy Partners, \$32,250
Littig House Community Center, \$25,000
Little Hill Foundation (N.J.), \$50,000
Little Orchestra Society, \$50,000
Lois & Samuel Silberman Fund, \$220,875
London School of Hygiene & Tropical Medicine,
\$700,000
Long Island Association for AIDS Care, \$21,000
Long Island College Hospital, \$43,100
Long Island Educational Television Council,
\$30,100
Long Island Fund for Women & Girls, \$101,060
Long Island Jobs with Justice, \$35,000
Long Island Progressive Coalition, \$41,000
Long Island University, \$210,000
Long Term Care Community Coalition, \$55,000
Loomis Chaffee School (Conn.), \$20,600
Los Angeles Free Clinic (Calif.), \$25,000
Louisiana Disaster Recovery Foundation (La.),
\$25,000
Lower East Side Ecology Center, \$41,000
Lower East Side People's Federal Credit Union,
\$40,000
Lower East Side Tenement Museum, \$67,640

M

Madison Avenue Presbyterian Church, \$21,100
Magical Music for Life Foundation (Conn.),
\$25,000

Maimonides Medical Center, \$85,000
Make-a-Wish Foundation of Metro New York,
\$23,300
Make the Road by Walking, \$75,100
Manhasset/Great Neck Economic Opportunity
Council, \$100,550
Manhattan Eye, Ear & Throat Hospital, \$74,180
Manhattan Theatre Club, \$263,100
Market Ministries (Mass.), \$50,000
Marlboro School of Music (Pa.), \$65,000
Martha Entenmann Tinnitus Research Center
(Vt.), \$100,000
Mary Louis Academy, \$175,000
Massachusetts General Hospital (Mass.), \$33,250
Massachusetts Institute of Technology (Mass.),
\$53,150
Medical Education for South African Blacks
(D.C.), \$136,750
Medical & Health Research Association of New
York City, \$154,000
Medicare Rights Center, \$100,000
MedShare International (Ga.), \$35,000
Meet the Composer, \$50,500
Meeting Street Center (R.I.), \$75,000
Memorial Sloan-Kettering Cancer Center,
\$630,742
Memorial United Methodist Church, \$32,390
Mental Health Association of Nassau County,
\$80,000
Mental Health Association of New York City,
\$65,500
Mercantile Library Association of the City of New
York, \$30,000
Mercy College, \$54,000
Mercy Haven, \$30,000
Metropolitan Council on Jewish Poverty, \$56,000
Metropolitan Museum of Art, \$891,191
Metropolitan Opera Association, \$618,850
Metropolitan Russian American Parents
Association, \$23,000
Middle Country Library Foundation, \$50,000
Middlebury College (Vt.), \$32,500
Midwood Development Corporation, \$40,000
Millbrook School, \$25,000
Minnesota Project (Minn.), \$125,000
Mixteca Organization, \$40,000
Mobility International USA (Oreg.), \$80,000
Mollie Biggane Melonoma Foundation, \$85,113
Montclair Art Museum (N.J.), \$50,000
Montclair Volunteer Ambulance Unit (N.J.),
\$40,000
Montefiore Medical Center, \$165,000
Montreat College (N.C.), \$90,990
Morgan Library & Museum, \$462,250
Morningside Retirement & Health Services,
\$28,250
Mosholu Montefiore Community Center,
\$53,000

Mount Sinai Hospital, \$55,500
 Mount Sinai Medical Center, \$278,220
 Mount Sinai School of Medicine of New York University, \$243,880
 Mountainside Hospital Foundation (N.J.), \$75,000
 Moving Image, \$21,100
 Ms. Foundation for Women, \$45,000
 Muhlenberg Foundation (N.J.), \$34,000
 Museum of the City of New York, \$65,300
 Museum of Fine Arts, Houston (Tex.), \$350,000
 Museum of Modern Art, \$342,650
 Museum of Television & Radio, \$171,000
 Music & Arts Center for Humanity (Conn.), \$25,000
 Musica Omnia (Mass.), \$25,000
 Muslim Women's Institute for Research & Development, \$65,000
 Mutual Housing Association of Southwestern Connecticut (Conn.), \$40,000

N

NAACP Legal Defense & Educational Fund, \$540,180
 Nah We Yone, \$60,000
 Nantucket Land Council (Mass.), \$31,000
 Nantucket Lighthouse School (Mass.), \$110,000
 Nassau County Coalition Against Domestic Violence, \$54,400
 Nassau County Museum of Art, \$55,000
 National Academy of Design, \$21,500
 National Alliance for the Mentally Ill of New York City, \$118,000
 National Alliance for Research on Schizophrenia & Depression, \$22,600
 National Audubon Society, \$54,611
 National Campaign for Sustainable Agriculture, \$50,250
 National Center on Addiction & Substance Abuse at Columbia University, \$121,500
 National Center for Law & Economic Justice, \$53,000
 National Center for Learning Disabilities, \$29,500
 National Dance Institute, \$81,950
 National Environmental Education & Training Foundation (D.C.), \$50,000
 National Environmental Trust (D.C.), \$125,000
 National Family Planning & Reproductive Health Association (D.C.), \$50,000
 National Forest Foundation (Mont.), \$25,000
 National Foundation for Facial Reconstruction, \$62,500
 Natl. Fdn. for Teaching Entrepreneurship to Handicapped & Disadvantaged Youth, \$30,000
 National Multiple Sclerosis Society, \$33,980
 National Osteoporosis Foundation (D.C.), \$35,000

National Partnership for Women & Families (D.C.), \$26,000
 National Public Radio (D.C.), \$27,700
 National Rowing Foundation (Conn.), \$125,000
 National Society for Gifted & Talented (Conn.), \$61,700
 National Wheelchair Sports Fund (Fla.), \$187,678
 National Wildlife Federation (Va.), \$80,100
 Natural Resources Council of Maine (Maine), \$40,000
 Natural Resources Defense Council, \$315,105
 Nature Conservancy (Va.), \$50,900
 Nature Conservancy, Eastern New York Chapter, \$20,200
 Nature Conservancy of New York, \$66,500
 Nature Conservancy New York, Long Island Chapter, \$22,500
 Naumburg Orchestral Concerts, \$50,720
 Neighborhood Family Services Coalition, \$30,000
 Neighborhood Housing Services of Jamaica \$40,000
 Neighborhood Network Research Center, \$34,000
 Neighbors Helping Neighbors \$40,000
 Neurosciences Institute (Calif.), \$50,000
 New Alternatives for Children, \$35,950
 New America Foundation (D.C.), \$383,000
 New Destiny Housing Corporation, \$200,000
 New Energy Foundation (N.H.), \$30,000
 New England Home for Little Wanderers (Mass.), \$21,000
 New Federal Theater, \$75,000
 New 42nd Street, \$67,250
 New Israel Fund (D.C.), \$38,550
 New Jersey Center for Visual Arts (N.J.), \$25,000
 New Jersey Work Environment Council (N.J.), \$50,000
 New Orleans Bar Foundation (La.), \$87,000
 New School, \$157,100
 New Song Urban Ministries (Md.), \$70,000
 New Visions for Public Schools, \$249,630
 New York Academy of Medicine, \$223,000
 New York Acquisition Fund, \$156,000
 New York AIDS Coalition, \$99,000
 New York Botanical Garden, \$1,546,800
 New York Cares, \$38,350
 New York City Alliance Against Sexual Assault, \$50,000
 New York City Ballet, \$289,090
 New York City Coalition Against Hunger, \$25,500
 New York City Early Childhood Professional Development Institute, \$25,000
 New York City Employment & Training Coalition, \$100,000
 New York City Financial Network Action Consortium, \$75,000

New York City Health & Hospitals Corporation, \$266,000
 New York City Justice Project, \$100,000
 New York City Mission Society, \$79,410
 New York City Opera, \$64,190
 New York City Police Foundation, \$24,800
 New York Civil Liberties Union Foundation, \$67,850
 New York Clinical Information Exchange, \$75,000
 New York Committee for Occupational Safety & Health, \$27,000
 New York Gilbert & Sullivan Players, \$20,500
 New York Hall of Science, \$127,600
 New York Historical Society, \$54,250
 New York Immigration Coalition, \$417,300
 New York Industrial Retention Network, \$43,000
 New York Open Center, \$525,500
 New York Police & Fire Widows' & Children's Benefit Fund, \$75,250
 New York-Presbyterian Hospital, \$892,690
 New York Preservation Archive Project, \$30,000
 New York Public Library Astor, Lenox & Tilden Foundations, \$348,890
 New York Restoration Project, \$61,450
 New York Society for the Prevention of Cruelty to Children, \$85,000
 New York State Defenders Association, \$25,000
 New York State Tenants & Neighbors Information Service, \$30,000
 New York University, \$295,210
 New York University, Leonard N. Stern School of Business, \$41,500
 New York University, Robert F. Wagner School of Public Service, \$95,300
 New York University School of Medicine, \$58,600
 New York Weill Cornell Medical Center Fund, \$5,028,600
 New Yorkers for Accessible Health Coverage, \$75,000
 New Yorkers Against Gun Violence Education Fund, \$50,550
 New Yorkers for Children, \$124,100
 New Yorkers for Parks, \$50,950
 Newport Art Museum & Art Association (R.I.), \$25,000
 Newton-Wellesley Hospital Charitable Foundation (Mass.), \$25,000
 Nightingale-Bamford School, \$113,500
 92nd Street YM-YWHA, \$45,100
 Nonprofit Coordinating Committee of New York, \$75,250
 Nonprofit Finance Fund, \$80,000
 North American Friends of Israel Oceanographic Research, \$21,500
 North Carolina State University (N.C.), \$38,500
 North Country School & Camp Treetops, \$20,250

North Oakland Community Charter School (Calif.), \$21,500
North Shore Child & Family Guidance Association, \$39,000
North Shore-Long Island Jewish Health System Foundation, \$150,750
Northern Westchester Hospital Association, \$22,000
Northfield Community Local Development Corp of Staten Island, \$40,000
Northfield Mt. Hermon School (Mass.), \$22,000
Northside Center for Child Development, \$394,550
Northwest Bronx Community & Clergy Coalition, \$40,000
Northwestern University (Ill.), \$27,700
NPower New York, \$60,000
NYC Department of Youth & Community Development, \$50,000
NYCharities.org, \$75,000
NYU Downtown Hospital, \$50,000
NYU Hospitals Center, \$100,000

O

Ocean Conservancy (D.C.), \$24,800
Oceana (D.C.), \$100,000
Ohel Children's Home & Family Services, \$138,412
Ohio State Legal Services Association (Ohio), \$32,000
Ohio University Foundation (Ohio), \$80,000
Old Dartmouth Historical Society/New Bedford Whaling Museum (Mass.), \$100,300
Old Westbury College Foundation, \$125,000
One Stop Senior Services, \$40,000
Ontological-Hysteric Theater, \$60,000
Open Door Family Medical Center, \$100,700
Oregon Environmental Council (Oreg.), \$100,000
Orthopaedic Scientific Research Foundation, \$100,000
Osborne Association, \$95,500
Ossining Union Free School District, \$40,000
Out2Play, \$25,000
Outreach Project, \$60,000
Overlook Hospital Foundation (N.J.), \$101,300
Oxfam America (Mass.), \$46,050

P

Pace University, \$35,250
Pace University School of Law, \$95,500
Pacific Council on International Policy (Calif.), \$31,000
Pancreatic Cancer Awareness Foundation (D.C.), \$50,000
Paper Bag Players, \$20,610
Parsons The New School for Design, \$54,500
Partners in Health (Mass.), \$27,000

Partnership for After School Education, \$27,000
Pathfinder International (Mass.), \$130,000
Pathways to College (Mass.), \$37,500
Patrons of the Arts of the Vatican Museums (Fla.), \$36,000
Peconic Land Trust, \$52,250
Pegasus Therapeutic Riding (Conn.), \$20,500
Pelham Education Foundation, \$25,000
PEN American Center, \$82,000
People for the American Way Foundation (D.C.), \$72,750
People-To-People Health Foundation (Va.), \$31,300
Peterson Institute for International Economics (D.C.), \$8,500,000
Phelps Memorial Hospital Center, \$37,300
Phelps-Stokes Fund (D.C.), \$30,000
Philharmonic-Symphony Society of N.Y., \$108,050
Phillips Exeter Academy (N.H.), \$20,231
Pickersgill (Md.), \$30,000
Pick-Up Performance Company, \$30,000
Pig Iron Theatre Company (Pa.), \$70,000
Pine Creek Valley Watershed Association. (Pa.), \$100,000
Planned Parenthood of Connecticut (Conn.), \$44,000
Planned Parenthood Federation of America, \$22,850
Planned Parenthood Hudson Peconic, \$49,750
Planned Parenthood of Nassau County, \$109,700
Planned Parenthood of New York City, \$271,570
Playwrights Horizons, \$43,500
Police Athletic League, \$86,450
Political Research Associates (Mass.), \$28,500
Polytechnic Preparatory Country Day School, \$132,500
Port Chester Carver Center, \$67,648
Portland State University (Oreg.), \$525,000
Pratt Area Community Council, \$30,000
Prep for Prep, \$112,850
Presbyterian Church (U.S.A.) Foundation (Ind.), \$52,050
Presbytery of New York City, \$34,700
Primary Care Development Corporation, \$65,000
Princeton Healthcare System Foundation (N.J.), \$500,000
Princeton Theological Seminary (N.J.), \$30,000
Princeton University (N.J.), \$1,612,256
Pro Bono Net, \$40,000
Pro-Choice Massachusetts Foundation (Mass.), \$25,000
Pro Mujer, \$45,500
Proctor Academy (N.H.), \$121,000
Project A.L.S., \$25,500
Project Enterprise, \$26,500
Project GRAD Long Island, \$43,500
Project Hospitality, \$27,500

Project Reach Youth, \$60,650
Pronto of Long Island, \$70,000
Prospect Park Alliance, \$76,850
Public Citizen Foundation (D.C.), \$29,393
Public Health Institute, \$75,000
Public/Private Ventures (Pa.), \$349,000
Public Theater, \$176,500
Puerto Rican Legal Defense & Education Fund, \$130,400
Purchase College Foundation, \$54,500
Putnam Hospital Center, \$48,380

Q

Queens College Foundation, \$36,125
Queens Council on the Arts, \$49,000
Queens University of Charlotte (N.C.), \$90,990

R

Rainforest Alliance, \$100,500
R.C. Church of St. Margaret Mary, \$25,000
Reading Team, \$26,500
Redefining Progress (Calif.), \$25,000
Regional Aid for Interim Needs, \$25,000
Regional Emergency Medical Services Council of New York City, \$30,000
Regional Plan Association, \$350,250
Regional YMCA of Western Connecticut (Conn.), \$25,000
Replications, \$50,000
Resources for Children with Special Needs, \$85,150
Rhode Island School of Design (R.I.), \$850,000
Rhodes College (Tenn.), \$90,990
River Network (Oreg.), \$50,000
Riverdale Mental Health Association, \$61,000
Riverdale Senior Services, \$40,300
Riverkeeper, \$97,380
Riverside Park Fund, \$21,350
Robin Hood Foundation, \$181,500
Rockefeller University, \$285,350
Rosie's Broadway Kids, \$40,000
Roulette Intermedium, \$52,000
Roundabout Theatre Company, \$24,840
Row New York, \$163,500
Rye Country Day School, \$24,250

S

Safe Horizon, \$29,100
Safe Passage (Maine), \$50,000
Safe Space, \$95,000
Sage Eldercare (N.J.), \$50,000
Saint Michael Academy, \$160,000
Salvation Army of Greater New York, \$208,760
Samaritan Village, \$64,000
Samuel Field YM & YWHA, \$40,000
San Diego Museum of Art (Calif.), \$25,000
Sanctuary for Families, \$86,550
Sarah Lawrence College, \$87,550

Sauti Yetu Center for African Women, Inc, \$40,000
 Scenic Hudson, \$118,000
 Scholarship & Welfare Fund of the Alumni Association of Hunter College, \$35,910
 School of American Ballet, \$92,000
 Sea Research Foundation (Conn.), \$120,000
 Seafarers & International House, \$49,000
 Second Stage Theatre, \$24,000
 Seeds of Peace, \$33,450
 Senior Care & Activities Center (N.J.), \$50,000
 Services & Advocacy for GLBT Elders (SAGE), \$55,400
 Sesame Workshop, \$5,120,000
 Shalom Task Force, \$49,000
 Shared Interest, \$30,600
 Shinnecock Indian Nation Fund, \$110,000
 Sierra Club Foundation (Calif.), \$83,500
 Silicon Valley Toxics Coalition (Calif.), \$75,000
 Sinergia, \$50,000
 Sisters of Charity of Saint Elizabeth (N.J.), \$425,500
 Skidmore College, \$28,730
 Skowhegan School of Painting & Sculpture, \$23,500
 S.L.E. Foundation, \$61,550
 SmartPower (Conn.), \$100,000
 Smile Train, \$23,550
 Smith College (Mass.), \$153,600
 Smithsonian Institution (D.C.), \$275,200
 Smithtown Historical Society, \$26,990
 Social Science Research Council, \$81,000
 Society for Progressive Supranuclear Palsy (Md.), \$26,000
 Solar Community Corp, \$30,000
 Sonoran Institute (Ariz.), \$75,000
 South Brooklyn Legal Services, \$61,700
 South County Hospital Healthcare System (R.I.), \$100,000
 South Street Seaport Museum, \$84,040
 Southampton Fresh Air Home, \$25,750
 Southampton Hospital Foundation, \$21,500
 Southampton Youth Services, \$37,500
 Southeast Louisiana Legal Services (La.), \$75,000
 Southern Maine Medical Center (Maine), \$25,000
 Southern Poverty Law Center (Ala.), \$25,305
 Special Olympics International (D.C.), \$25,250
 Spence School, \$119,550
 Spring Creek Community Corporation, \$40,000
 St. Andrew's Presbyterian College (N.C.), \$90,990
 St. Anthony High School (N.J.), \$100,000
 St. Barnabas Hospice & Palliative Care Center (N.J.), \$60,000
 St. Bernard's School, \$110,500
 St. Christopher's School (Va.), \$26,024
 St. Christopher's, \$33,920
 St. Fanourios Greek Orthodox Church (N.J.), \$50,000
 St. James Episcopal Church of New York, \$22,400
 St. Jean Baptiste Church, \$115,000
 St. John's University, \$42,500
 St. Jude Children's Research Hospital (Tenn.), \$111,340
 St. Luke's Chamber Ensemble, \$65,000
 St. Luke's Roosevelt Hospital Center, \$25,280
 St. Mary's Foundation for Children, \$988,500
 St. Nicholas Neighborhood Preservation Corporation, \$50,000
 St. Paul's Center of New York, \$70,000
 St. Paul's Evangelical Lutheran Church, \$25,000
 St. Peter's Church of Bay Shore, \$60,000
 St. Sebastian's School (Mass.), \$22,500
 St. Theresa's Church (Conn.), \$60,000
 St. Timothy's School (Md.), \$500,000
 St. Vincent Hospital Foundation (N.Mex.), \$100,000
 St. Vincent's Services, \$25,000
 Stages of Learning, \$48,844
 Stanford University (Calif.), \$127,800
 Stanley M. Isaacs Neighborhood Center, \$36,430
 Starworks Foundation, \$95,000
 State Alliance for Federal Reform of Chemicals Policy (Wash.), \$100,000
 Stephen Petronio Dance Company, \$90,000
 Steppingstone Foundation (Mass.), \$280,000
 Stony Brook Foundation, \$553,000
 Stony Brook University SUNY, \$21,750
 Storyville Center for the Spoken Word, \$30,000
 Student Advocacy, \$53,950
 Student/Sponsor Partnership, \$77,000
 Studio Museum in Harlem, \$30,750
 Summer on the Hill, \$61,000
 Summer Search Foundation (Calif.), \$100,000
 SUNY, State College of Optometry, \$179,500
 Sustainable Long Island, \$192,350
 Sustainable Nantucket (Mass.), \$80,000
 Swarthmore College (Pa.), \$83,500
 Symphony Space, \$36,250
 Synergos Institute, \$35,000
 Syracuse University, \$20,730

T
 Taft Institute for Government, \$38,470
 Taft School (Conn.), \$45,000
 Tanzanian Children's Fund (Maine), \$50,000
 Taproot Foundation (Calif.), \$50,000
 Target Margin Theater, \$62,500
 Teach for America, \$82,300
 Teachers College, Columbia University, \$125,500
 Teachers Network, \$60,200
 Teaching Matters, \$51,000
 Technoserve (Conn.), \$68,040
 Theatre for a New Audience, \$80,000
 32nd Degree Masonic Learning Centers for Children (Mass.), \$30,000
 Thomas Hartman Foundation for Parkinson's Research, \$70,000
 Thread of Hope for Economic Advancement Foundation, \$22,000
 Threshold Dance Projects, \$61,000
 Tides Foundation (Calif.) \$4,001,000
 T.J. Martell Foundation, \$37,100
 TOUCH Foundation, \$100,000
 Touro College, \$125,000
 Transfiguration Church, \$21,000
 Trees New York, \$73,400
 Trevor Day School, \$58,000
 Trey Whitfield School, \$100,000
 Trickle Up Program, \$43,500
 Trinity Church Trinity Place Community Center, \$25,000
 Trinity College (Conn.), \$37,300
 Trinity College School Fund (Mass.), \$52,000
 Trinity Episcopal School Corporation, \$20,100
 Tri-State Transportation Campaign, \$385,000
 Trudeau Institute, \$80,050
 Trust for Public Land (Calif.), \$54,275
 Trustees of Tufts College (Mass.), \$63,650
 Tulane University Administrators' Educational Fund (La.), \$31,500

U
 UJA/Federation of Jewish Philanthropies of New York, \$744,874
 Unified New Cassel Community Revitalization Corporation, \$85,000
 Union College, \$106,000
 Union of Concerned Scientists (Mass.), \$119,500
 Union Free School District of the Tarrytowns, \$35,450
 Unitarian Church of All Souls, \$26,700
 United Bronx Parents, \$50,000
 United Hospital Fund, \$122,567
 United Nations Association of the United States of America, \$48,250
 United Nations Foundation (D.C.), \$35,000
 United Negro College Fund (Va.), \$26,627
 United Neighborhood Houses of New York, \$181,100
 United States Fund for UNICEF, \$49,819
 United States Golf Association Foundation (N.J.), \$31,000
 United Way of Greenwich (Conn.), \$32,600
 United Way of Long Island, \$33,370
 United Way of New York City, \$217,720
 United Way of Rhode Island (R.I.), \$150,000
 United Way of Tri-State, \$62,500
 United Way of Westchester & Putnam, \$33,230
 Universite Montpellier II, \$78,000
 University at Buffalo, SUNY, \$21,448
 University of California (Calif.), \$50,000

University of California, San Francisco (Calif.), \$25,000
 University of Chicago (Ill.), \$406,250
 University of Connecticut (Conn.), \$40,280
 University of Illinois Foundation (Ill.), \$181,000
 University of Miami School of Medicine (Fla.), \$35,000
 University of North Carolina at Chapel Hill (N.C.), \$68,343
 University of Pennsylvania (Pa.), \$167,950
 University of Pittsburgh (Pa.), \$243,000
 University of Rochester, \$26,000
 University of Scranton (Pa.), \$23,425
 University of the State of New York Regents Research Fund, \$250,000
 University of Tennessee (Tenn.), \$27,500
 University of Texas (Tex.), \$65,000
 University of Vermont (Vt.), \$25,680
 University of Washington (Ill.), \$116,439
 Unkechaug Nation of Indians of Poospatuk Indians, \$30,000
 Upper Manhattan Together, \$50,000
 Urban Agenda, \$52,500
 Urban Assembly, \$100,000
 Urban Genesis (Pa.), \$30,000
 Urban Health Plan, \$75,000
 Urban Justice Center, \$41,000
 Urban Youth Collaborative, \$100,000
 US Civilian Research & Development Foundation (Va.), \$20,548
 USA Cycling Development Foundation (Colo.), \$26,000

V

Vassar College, \$69,675
 Villanova University (Pa.), \$27,000
 Visiting Neighbors, \$40,000
 Visiting Nurse Association of Long Island, \$25,000
 Visiting Nurse Service of New York, \$23,610
 Vivian Beaumont Theater/Lincoln Center Theater, \$113,250
 Vocational Foundation, \$60,100

W

Waldorf School of Garden City, \$122,000
 Walter W. Naumburg Foundation, \$72,080
 Washington Institute for Near East Policy (D.C.), \$25,000
 Washington Monthly (D.C.), \$100,000
 Washington University (Mo.), \$24,500
 Wellesley College (Mass.), \$51,200
 West Harlem Environmental Action, \$83,500
 Westchester Arts Council, \$20,450
 Westchester Community College Foundation, \$30,750
 Westchester Jewish Community Services, \$68,650
 Westchester Land Trust, \$58,650

Westhab, \$26,940
 Weston Playhouse Theatre Company (Vt.), \$25,000
 White Mountain School (N.H.), \$156,500
 White Plains Hospital Center, \$108,640
 Whitney Museum of American Art, \$79,365
 Wilderness Society (D.C.), \$77,300
 Wildlife Conservation Society, \$508,555
 William J. Brennan, Jr. Center for Justice, \$75,450
 Williams College (Mass.), \$366,125
 Warren Wilson College (N.C.), \$90,990
 Woodrow Wilson International Center for Scholars (D.C.), \$70,000
 Windward School, \$127,000
 Winthrop-University Hospital, \$103,000
 WNYC Radio, \$330,500
 Women's Division, \$21,020
 Women's Leadership Fund, \$25,600
 Women's Prison Association & Home, \$22,240
 Wooster Group, \$90,000
 Workforce Professionals Training Institute, \$100,000
 Working Playground, \$56,000
 Workplace Project, \$28,250
 Workshop in Business Opportunities, \$35,000
 World Cares Center, \$50,000
 World Golf Foundation (Fla.), \$150,000
 World Learning (Vt.), \$332,350
 World Music Institute, \$50,000
 World Resources Institute (D.C.), \$105,000
 World Trade Center Memorial Foundation, \$50,000
 World Union for Progressive Judaism, \$75,000
 Wyckoff House & Association, \$30,000

Y

Yale University (Conn.), \$493,236
 Yale University, School of Forestry & Environmental Studies (Conn.), \$69,800
 YMCA of Central & Northern Westchester, \$33,140
 YMCA of Fanwood-Scotch Plains (N.J.), \$60,000
 YMCA of Greater New York, \$411,484
 YMCA of Long Island, \$67,600
 Yonsei University College of Medicine, \$35,000
 Yorkville Common Pantry, \$32,000
 Young Audiences, \$32,500
 Young Korean American Service & Education Center, \$40,000
 Young Survival Coalition, \$50,000
 Youth Environmental Services, \$42,000
 Youth Renewal Fund, \$45,000
 Youth for Understanding USA (Md.), \$40,000
 YWCA of Brooklyn, \$225,940
 YWCA of Metropolitan Chicago (Ill.), \$22,940

Grants listed: \$143,154,388
Grants under \$20,000: \$14,289,682
TOTAL: \$157,444,070

credits

The photographs on pages 1, 4, 6, 7, 11, 16, and 22 were taken by Metin Oner.
The photographs on pages 2, 3, and 31 were taken by Sean Sime.
Cover photograph, Getty Images.

- p. 8 Neighborhood Housing Services of Jamaica, *photo*: Pablo Sanchez
- p. 12 Career Gear, *photo*: John Sanful
- p. 13 IMPACT Coalition, *photo*: Shana Bryce
- p. 14 New York Restoration Project, *photo*: Tom Campbell
- p. 14 Project Enterprise, *photo*: Anthony Ponds Photography
- p. 15 NPower, *photo*: NPower New York
- p. 18 SAGE, *photo*: Doreen Bermudez
- p. 20 Northside Center for Child Development, *photo*: Annie Etheridge
- p. 35 Long Island Immigrant Alliance, *photo*: Long Island Immigrant Alliance
- p. 37 Bridge Fund of Westchester, *photo*: Ken Ben-Ari

Writer/Editor

Ani F. Hurwitz

Design

Van Gennep Design

Printing

Rasco Graphics

A copy of our latest annual report filed with the New York Secretary of State may be obtained upon request addressed to:

909 Third Avenue, 22nd Floor, New York, NY 10022

or

Office of the Attorney General Charities Bureau

120 Broadway, New York, NY 10271

The New York Community Trust

909 Third Avenue, 22nd Floor
New York, NY 10022
(212) 686-0010
www.nycommunitytrust.org

Long Island Community Foundation

Nassau Hall
1864 Muttontown Road
Syosset, NY 11791
(516) 348-0575
www.licf.org

Westchester Community Foundation

200 North Central Park Avenue, Suite 310
Hartsdale, NY 10530
(914) 948-5166
www.wcf-ny.org