




Cultivating Charitable Giving

JOHNSON COUNTY COMMUNITY FOUNDATION | ANNUAL REPORT 2009



**“It takes a noble person to
plant a seed to grow a tree
that will one day provide
shade to those whom one
may never meet.”**

Dr. David E. Trueblood





“Let us develop the resources of our land, call forth its powers, build up its institutions, promote all its great interests, and see whether we also, in our day and generation, may not perform something worthy to be remembered.”

Daniel Webster



Table of Contents, Letter from Board Chair & President/CEO	inside cover - 1
Growing Philanthropists: YPIJC	2-3
Grants, How to Apply	4-5
JCCF Scholarship Recipients	6-7
Starlight Express Gala, Friends of JCCF	8-9
JCCF Funds & Donors to the Funds, The Legacy Society, Memorial Gifts	10-18
JCCF Circle of Friends, Giving Options	19
Financial & Investment Profile, Grant Growth	20-21
Board of Directors & Staff Photos, Committees	22-23
Annual Meeting 2009, Sponsors	24
Sponsors	25

A MESSAGE FROM THE BOARD CHAIR & PRESIDENT/CEO

Cultivating Charitable Giving

The Johnson County Community Foundation plants seeds in your neighborhood. The seeds of charitable giving have been and are being sown from Greenwood to Franklin to Trafalgar to Edinburgh. The foundation has harvested and scattered more than **\$6,000,000 back into the community** since the first philanthropic “pharmers” began the planting process almost 25 years ago!

Consider us as the large oak tree with the foundation organization being the roots and the trunk. We are a well established, tax-exempt, nationally-certified agency that distributes our funds to local students via scholarships and to local not-for-profit organizations via grants. We provide the stability to hold up the rest of the tree.

The branches of the tree represent the donors; the leaves represent the students and not-for-profit organizations. Without the foundation, the rest of the tree would collapse and Johnson County would wilt. This is why the relationships that we sow with donors are critical to the circle of life in Johnson County.

Sowing the seeds early for a charitable lifestyle is the key to success. The seeds for change were sown many years ago with one such donor, Margaret Beeson. Through her vision to help forever grow the City of Franklin, her bequest to

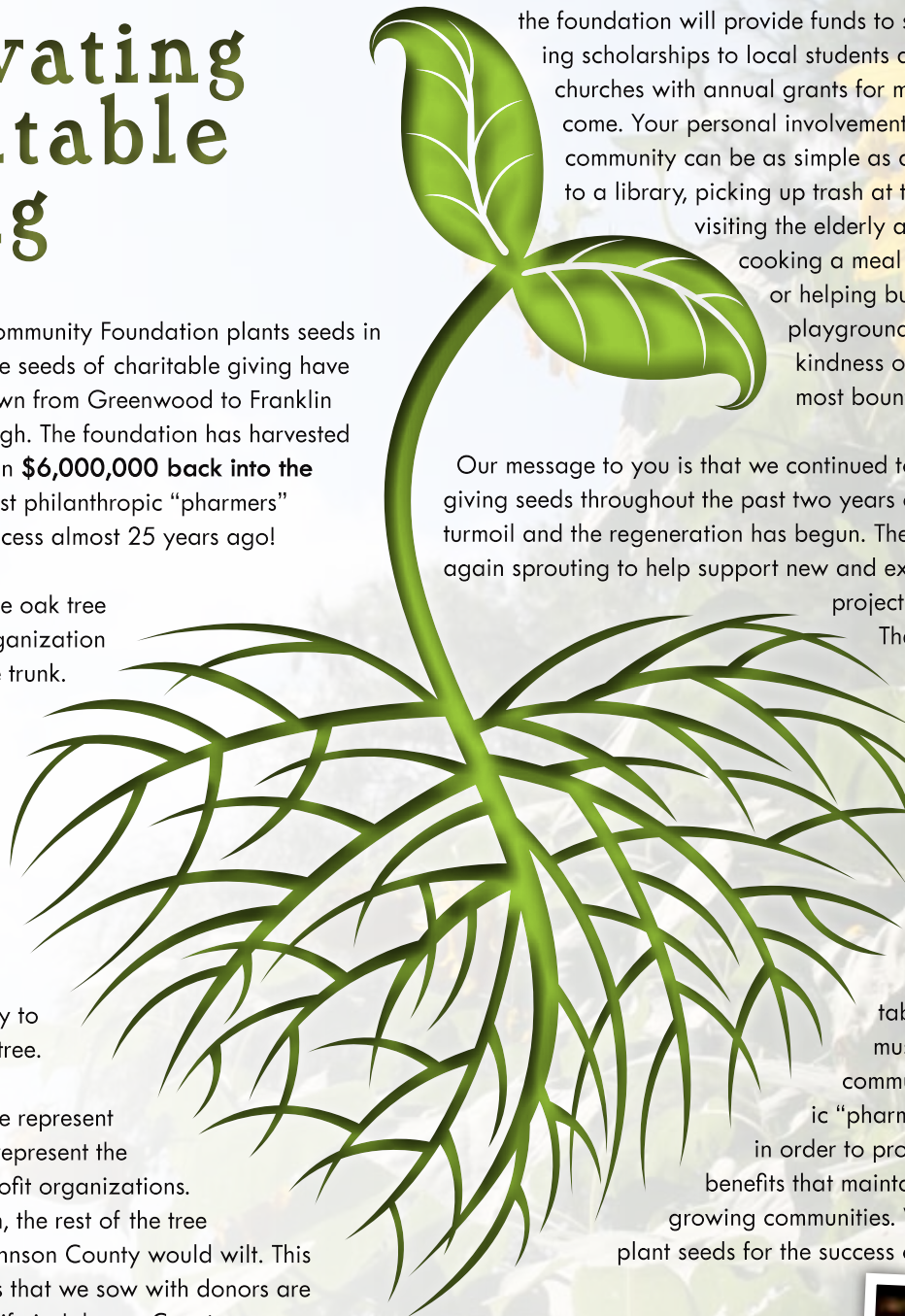
“It takes a noble person to plant a seed to grow a tree that will one day provide shade to those whom one may never meet.” Dr. David E. Trueblood (Earlham College)

the foundation will provide funds to support nursing scholarships to local students and assist two churches with annual grants for many years to come. Your personal involvement in growing your community can be as simple as donating a book to a library, picking up trash at the local park, visiting the elderly at a nursing home, cooking a meal for those in need or helping build a new school playground. Simple acts of kindness often result in the most bountiful harvests!

Our message to you is that we continued to plant charitable giving seeds throughout the past two years of economic turmoil and the regeneration has begun. The seeds are again sprouting to help support new and exciting community projects and initiatives.

These tiny sprouts will become sturdy plants that can be harvested in the form of scholarships and grants for years to come.

But, these charitable giving seeds must be re-sown by community philanthropic “pharmers” continuously in order to provide bountiful benefits that maintain healthy and growing communities. Will you help us plant seeds for the success of tomorrow?



Gail



Gail Richards,
President & CEO



Anne Young,
Board Chair

Anne



Growing philanthropists

“All of the flowers of all the tomorrows are in the seeds of today. INDIAN PROVERB

Carah Austin, Adrienne Bay, Bradley Denton, Maggie Ketchum, Derek Littlejohn, and Emma Wells have awarded hundreds of dollars of grant money to worthy causes in Johnson County, yet they are still in their teens. These students from high schools across the county serve on the Youth Philanthropy Initiative of Johnson County (YPIJC) Action Board.

The Youth Philanthropy Initiative of Johnson County (YPIJC) is the first countywide youth leadership program focused on inspiring excellence in young people. The program equips young people with opportunities, resources, mentors and tools to solve serious community issues while developing a lifelong commitment to philanthropy.

Derek Littlejohn said, “Before I became involved with YPIJC, I did not believe that the youth in our community could have such a profound effect on society. However, having witnessed many ambitious youth present their ideas on how to allow our community to blossom, I believe that we can allow our community to reach new heights, no matter what our age.”

YPIJC gives county youth the opportunity to experience what it is to grant funds to others. The YPIJC Action Board serves as the grant review panel as well as the YPIJC program board of directors. The YPIJC Action Board is comprised of youth and adult members who work together to promote and execute the YPIJC program.

“These students are a pleasure to work with”, said Kim Minton, director of grants and scholarships for the Johnson County Community Foundation. “I have been quite impressed with their dedication to the program and their passion for giving.”



Adrienne Bay learned about YPIJC while she was in middle school. She had helped write grants to fund a Veteran's Day celebration and “Day of Caring.” Seeing what impact YPIJC was having in her community made her want to be involved.

From the example set by her parents and brothers, Maggie Ketchum learned the importance of giving back.

“Philanthropy means helping people and giving to others in need. Corinthians 13:8 says, ‘Charity never faileth.’ I believe this is true with all my heart. I believe that means above all, charity is the best thing to do,” said Ketchum.

The program is teaching young people that they can make a difference.



“YPIJC has helped me realize just what to do to help my community thrive. Most people don’t know where to start to make a difference, and I have learned that it’s not that complicated. Anyone can do it,” said Emma Wells.

YPIJC president, Bradley Denton said, “YPIJC has taught me that philanthropy is a very important aspect of life. I plan to not only participate in YPIJC for as long as I can, but to also be a lifelong philanthropist.”

GRANT OPPORTUNITIES

YPIJC provides grant money for youth-led service projects, with grants ranging between \$50 and \$500. Grants are awarded

to 501(c)(3) nonprofit organizations and other groups including community organizations, schools, classrooms, religious organizations and youth groups.

Grant applications are available upon request at Youth Connections, Purdue Extension Johnson County office, Johnson County Community Foundation or online at www.jccf.org.



YPIJC members Emma Wells, Adrienne Bay and Derek Littlejohn sold snowcones at a community event in Trafalgar to raise funds for the YPIJC program.

YPIJC VISION

That young people from all walks of life in Johnson County will develop leadership skills and become aware, educated and actively involved in philanthropy.



Sharing the harvest

The foundation serves thousands of people who share a common concern – improving the quality of life in Johnson County. Our funds help meet the challenges of changing times. Each year we award grants to many of the humanitarian, educational and cultural organizations in this remarkable county we call home. We love sharing the harvest.

Please note: The endowments and other funds administered by the foundation might not make grants in a particular year. There are a number of possible reasons for this including donor recommendations, lack of a qualifying grantee or candidate, giving an endowment time to grow for the future, etc. To follow is a list of grant recipients, amount of grant and purpose of the grant, listed by the fund gifting each grant for 2009:

John K. & Merrillyn R. Bass Fund Garfield Park Baptist Church \$3,166 To provide general operating support	Johnson County Historical Society \$219 To provide general operating support	Arthur Baxter YMCA \$5,000 To provide support for the Before & After school program
Capacity Building Fund Johnson County Community Foundation \$10,000 To provide support to update JCCF website	Dick & Janet Martin Fund Whiteland Community High School \$500 To provide program support to the Whiteland High School boy's basketball and baseball programs	Big Brothers Big Sisters of Central Indiana \$1,500 To provide support to their one-to-one mentoring program
Kate Comiskey Memorial Fund Brown County High School \$500 To provide support to financial assistance to needy students	Daniel P. Mercer Family Fund Franklin Community Middle School \$750 To provide support to the "Set a Good Example" program	Christian Help, Inc. \$4,300 To provide support to establish a transitional housing program in Edinburg
Corporate Cup Challenge Fund Big Brothers Big Sisters of Central Indiana \$3,000 General operating support	Indiana Bulls \$1,500 For the Bulls Scholarship Program	CICOA - Access Network, Inc. \$3,500 To support the delivery of meals to seniors age 60 and over
Special Olympics Johnson County \$3,000 General operating support	Marie Pitcher Fund Franklin Symphonic Council \$1,000 General operating support	College Mentors for Kids \$2,000 To provide assistance to help support 25 at risk youth in Franklin through 30 Franklin College mentors
The Benevolent Protective Order of the Elks No. 1818 Fund Franklin Heritage, Inc. \$1,500 To provide continued support to the Artcraft Building Renovation	Redwood Fund Fair Haven Foundation, Inc. \$13,390 General operating support	Council on Foundations \$1,430 Membership & dues
Barbara Garton Fund Johnson County Community Foundation \$698 To provide operating funds for program services	Shaul Family Fund Franklin College \$200 To provide support for the "Read for the Record" day on October 8th	Eastside Elementary School \$3,000 To provide support for the CAMP Program – a skills based mentoring program for 3rd - 5th graders
Alexander Hamilton Good Citizens & American History Essay Award Fund Alexander Van Gorden \$100 2009 DAR Good Citizens Award Recipient	Lyman A. and Corbalou A. Snyder Family Fund Aunt Ginny Fund \$307 General operating support	Franklin College \$300 To provide support to the "Read for the Record" day on October 8th
Catherine Reese \$100 2009 DAR Good Citizens Award Recipient	Boys & Girls Club of Franklin \$250 General operating support	Franklin Study Connection \$5,000 To provide support to the Franklin Study Connection program
Whitney Phillips \$100 2009 DAR Good Citizens Award Recipient	Gary Brackett's Impact Foundation \$200 General operating support	Girls Inc. of Franklin \$5,168 To provide support to grow and expand Outreach Services throughout the county for the SMART program
Aunt Ginny Fund Indian Creek Elementary School \$282 To provide support to children in need	Johnson County Historical Society \$250 General operating support	Greater Greenwood Chamber of Commerce \$1,250 Learn to Lead Series – Jones Family Foundation, Inc.
Indian Creek Intermediate School \$282 To provide support to children in need	Johnson County Historical Society \$250 General operating support	Habitat for Humanity of Johnson County \$5,000 To provide support for the development of the organization's marketing plan and to help for first ever Greenwood build
Webb Elementary School \$564 To provide support to children in need	St. Francis Healthcare Foundation NICU \$200 Gift in honor of Marla McKibben	Interchurch Food Pantry \$500 To provide support for the Johnson County Thanksgiving Banquet
LeMasters Fund Historical Society of Burlington, Vermont \$100 General operating support	St. Pierre Youth Leadership Fund Youth Connections Johnson County \$904 To provide support to the YPIJC program	Johnson County Senior Services \$5,000 To provide support for the transportation of seniors in the county
Hopewell Presbyterian Church \$219 General operating support	Tree of Caring Fund United Way of Johnson County \$2,150 To provide support to the Christmas Angels program	Leadership Johnson County \$2,500 To provide support to the Education Program Day in January 2010
Humane Society Johnson County \$219 General operating support	Unrestricted Community Impact Fund Alternative Care Experience (ACE) \$5,000 To provide support for after school care for kids	Marriage Investors, Inc. \$2,500 To provide support to conduct an annual educational conference for married couples and additional educational programs



At the Mystery Breakfast on October 29, Rhett Cecil, Habitat Executive Director, applauded Gail Richards when she announced that Habitat for Humanity was awarded a \$5,000 grant. Habitat for Humanity received \$5,000 to invest in the development of their marketing outreach and Greenwood build.



This gentleman received the first tracking device of Project Lifesaver from fireman David Porter. The pilot program, started in Bargserville, provides a preventative approach to people who have a disease that causes them to wander. Equipment tracks individuals, helping caregivers find them more quickly in instances when they wander. Project Lifesaver received a \$5,000 grant. This program will provide the framework for other public safety personnel in the county.

GRANT GUIDELINES

how to apply

We encourage contact between grant seekers and foundation staff before, during and after the proposal review process. We provide applicants with general advice about our process and funding priorities. Grant seekers must use our grant application and established annual grant cycles. However, we are responsive to emergency needs or time sensitive opportunities, so contact us at any time.

To be eligible, an organization must qualify under the regulations of the U.S. Treasury codes as a nonprofit. The community foundation works to further charitable projects in compliance with these regulations, as well as in compliance with nondiscrimination practices.

Nonprofits may make a letter of inquiry that contains a brief statement of needs and enough information about the project for us to determine if a formal application is necessary. If so, we will provide you with an application and comprehensive guidelines. You may also obtain additional information regarding our grant guidelines by visiting our website at www.jccf.org.

Partnership for a Healthier Johnson County	\$5,000	Elmon & Lucile G. Williams Fund	
To provide support for five free dental clinics throughout Johnson County to those who qualify		Franklin College	\$3,000
Prevent Blindness Indiana	\$3,000	To provide support for Law Day	
To provide support to 3,700 children In Johnson County		Turning Point	\$5,000
Project Lifesaver Johnson County	\$5,000	To provide support for local safety programs, education about the cycle of violence, and advocacy for other local services	
To provide general operating support to start a pilot program of Project Lifesaver in Johnson County		Lucile G. Williams Gift Fund	
The Refuge, Inc.	\$3,000	Johnson County Community Foundation	\$6,886
To provide support for non-perishable food items for their food pantry		General operating support	
The Salvation Army	\$6,000	Youth Philanthropy Initiative of Johnson County Fund	
To provide matching funds for a state grant that will support unemployed residents of Johnson County		Youth Connections of Johnson County	\$1,449
United Way of Johnson County	\$5,000	To provide support to the YPIJC spring grants program	
To provide support for the Economic Assistance Plan matching program		AGENCY FUNDS	
Volunteer Fair Fund	\$1,000	Franklin Symphonic Council Agency Fund	
To provide general operating support for Johnson County Volunteer Fairs		Franklin Symphonic Council	\$5,593
WindRose Health Network, Inc.	\$4,900	General operating support	
To provide support for the Edinburgh Family Health Center		Franklin United Methodist Home Agency Fund	
Youth Connections	\$647	Franklin United Methodist Community	\$5,881
To provide support to the YPIJC spring grant program		2009 Distribution	
Youth Connections	\$3,000	Johnson County Historical Society Agency Fund	
To provide additional support to their community outreach programs		Johnson County Historical Society	\$391
Youth Philanthropy Initiative of JC	\$1,000	General operating support	
To provide a 1:1 match for YPIJC fundraising efforts		The Greenwood Rotary Club Fund	
Charles and Kathleen O. Van Nuys Family Fund		Greenwood Rotary Club	\$1,136
Franklin Heritage Inc.	\$2,000	To provide support to the club's charitable giving program	
General operating support		Reach for Youth Agency Fund	
Pat Van Valer Donor Advised Fund		Reach for Youth	\$168
Franklin College	\$2,000	2009 Distribution	
General operating support		Tara Treatment Center Agency Fund	
Sertoma Club of Greenwood Dr. Robert Hamill Memorial Scholarship Fund	\$2,000	Tara Treatment Center	\$113
To provide support for 2009 scholarship		2009 Distribution	
		Turning Point Agency Fund	
		Turning Point	\$363
		2009 Distribution	



Cultivating dreams

“I was fortunate to get a scholarship...Somebody was kind enough to spend their money to educate people that they would never get to know. That’s what I think philanthropy is about.”

LEE IACOCCA

The Johnson County Community Foundation administers 56 scholarship funds. These scholarships are made possible through the generosity of our donors. Their vision enables the foundation to assist future generations in meeting their educational goals – cultivating dreams.



Daniel Bechman



Alisha Bowles



Jessica Buchanan



Chelsea Bujarsky



Mackenzie Church



Amanda Churney



Amy Coffman



Ethan Coffman



Amelia Daily



Joy DeBaun



Jacqueline Erickson



Shelby Fink



Arden Gervase



Natalie Grisson



Danielle Hainley



Kyle Hart



Jonathan Haugh



Jennifer Hines



Taylor Hole



Chelsea Hook



Krista Hull



Courtney Huter



Sarah Kelsay



Jonathan Kersey



Katelyn Kessler



Aaron Kidwell



Olivia Koenig



Dan Lee



Nancy Lin



Samantha Martin



Havanna Nally



Nicole Nichols



Chad Percifield



Leah Streeval



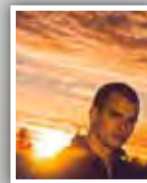
Coral Vannoy



Lyndsey Wall



Anna Watkins



Jacob Watkins



Chris Webb



Rachel Weller



Chelsea Wessel



Amanda Workman

2009 JCCF Scholarship Recipients by Fund

Please note: All scholarship funds administered by the foundation might not grant awards every year. There are a number of possible reasons for this including donor recommendations, lack of a qualifying candidate, giving a fund time to grow for the future, etc. To follow is a list of scholarship recipients for the funds that awarded scholarships in 2009:

Marc Adams School of Woodworking Scholarship

Stuart Denniss
William Ross
Anne Shellabarger

Sonya Baker-Hallett Tri Delta Fund

Anne Kaylor

Dr. Earl E. Blemker Memorial Scholarship

Jonathan Kersey

Marie M. Borden Scholarship

Heather Sampson

Clarence "Buck" Boyce, Jr. Memorial Scholarship

Jacob Watkins

Karl Bradlyn Memorial Scholarship

Shelby Fink

Kate Comiskey Memorial Scholarship

Courtney Huter

Renewal:

Kolby Harrell
Jordan Schaaf

Davidson Brothers Scholarship in Memory of Eugenia & Maurice Davidson

Danielle Hainley

Dr. James Dixon Memorial Scholarship

Jessica Buchanan

Franklin Dollars for Scholars Scholarship

Daniel Bechman
Mackenzie Church
Jacqueline Erickson
Kyle Hart
Havanna Nally

Franklin Rotary Scholarship

Amelia Daily
Olivia Koenig
Nancy Lin
Whitney Phillips

Greenwood White River Rotary Club Scholarship

Kierstin Veldkamp
Chelsea Wessel

Nisha Grimm Memorial Scholarship

Amanda Churney

Jim Halik "Kids are Special People" Scholarship

Amanda Workman

Greenwood Sertoma Club/The Dr. Robert L. Hamill Memorial Scholarship

Rachel Weller

Hamann Family Memorial Scholarship

Christopher Webb

Renewals:

Cassie Parrish
Sarah Schutter

Marvin Dale Hamilton Memorial Scholarship

Jonathan Haugh

Janet Hansen Memorial Edinburgh Scholarship (Edinburgh High School)

Jennifer Hines
Hope Shepherd

Ethan C. Hertler Memorial Scholarship

Ethan Coffman

Isom Pride Scholarship

Joy DeBaun

Johnson County Community Scholarship

Chelsea Hook
Katelyn Kessler
Hope Shepherd

Greg Lee, Jr. Memorial Scholarship (Whiteland Community High School)

Nicole Nichols
Michael Robison

Lilly Endowment Community Scholarship

Krista Hull
Leah Streeval

Renewals:

Dillon Etter
Anne Kaylor
Alyssa McPherson

Chelsi Mobley
Joe Paulson
Rachel Williams

Rick Machledt Memorial Fund

Jake Long

W. Joan Murphy Scholarship

Chelsea Bujarsky

Marion and Eva Peeples Foundation Trust Scholarship

Shelby Chew
Samantha Clodfelter
Samantha Crouch
Brittany Daugherty
Carly Hensley
Kelly Lazzell
Samantha Jo Martin
Whitney Phillips
Shelby Reynolds
Kaitlin Sutton
Cayla Tait
Jeff Tessman

Renewals:

Christine Allen
Katie Collins
Megan Ertel
Emma Ferrell
Megan Fitzpatrick
Jessica Ganshorn
Kelly Hackney
Brooke Hartkorn
Ciara Hershauer
Hillary Hiemenz
Daniel King
Richard Marcinko
Melissa Mast
Codi McConnell
Shannon Owen
Jennifer Pate
Angela Rizzo
Courtney Sickman
Kendyl Thorne
Kathryn Wenning
Sarah Whitworth
Brittany Winebrenner
Jenna Yeage

Shaul Family Parent Scholarship

Katelyn Kessler

Umbarger Show Feed Scholarship in Memory of Steve Taylor

Daniel Bechman



The 2009 scholarship recipients pose for a group photo at the foundation's annual meeting in June 2009.

James A. Voland Scholarship

Daniel Bechman
Alisha Bowles
Chelsea Bujarsky
Mackenzie Church
Amy Coffman
Kerri Cragen
Natalie Grissom
Taylor Hole
Aaron Kidwell
Sarah Kelsay
Daniel Lee
Chad Percifield
Whitney Phillips
Matthew Pittman
Natalie Snyder
Anna Watkins
Lyndsey Wall
Amanda Workman

Aaron Zeiher Memorial Scholarship

Jonathan Haugh



Gathering seeds



SPONSORS

RUBY SPONSOR (\$7,500)
Johnson Heating & Cooling

SAPPHIRE SPONSOR (\$5,000)
Vectren Foundation

GOLD SPONSORS (\$2,500)
Caterpillar
Daily Journal
First Merchants Bank
Franklin College
Johnson Memorial Hospital & Community Health Network

SILVER SPONSORS (\$1,250)
Dean Abplanalp & Tom Armor
Fifth Third Bank
Heartland Community Bank
Mid America Health
Mutual Savings Bank
Old National Bank
Sherman & Armbruster, LLP
The Skillman Corporation
Waddell & Reed, Inc. — Janette & Walter Koon
Wertz Timber & Veneer
Wilson St. Pierre Funeral Service & Crematory

BRONZE SPONSORS (\$625)
Allied Technologies Food Equipment, Inc.
Baker & Daniels, LLP

SPECIAL THANKS
Bargersville Liquors
Christy's of Indiana
DESIGNations
The Flower Market
Freedom 95.9
IndyCity Gift Baskets — Kim Shell
Jonathan Byrd's
Lakeside Sounds DJ
Monarch Beverage
Padgett's Signs
Pro-Tek Photography
Rafael Sanchez

EGYPTIAN EXPERIENCE

Egyptian-themed decor and authentic belly dancers set the stage for an Egyptian Experience at JCCF's 2009 Starlight Express Gala on November 14, but a highlight of the evening was Gala co-chair Brian Biehn's rendition of Steve Martin's "King Tut."



The 2009 Starlight Express Egyptian Experience brought out the best in Johnson County philanthropy. Guests to the 15th Annual Starlight Express Gala generously donated more than \$50,000 to JCCF on November 14. Funds raised help support a variety of community initiatives throughout the year.

The event drew over 250 individuals who were treated to Egyptian-themed décor, food, auctions and entertainment. The lively commentary by RTV6's own Rafael Sanchez set the tone for an enjoyable evening of hors d'oeuvres, gourmet food and chocolate raspberry torte for dessert. The performance by JCCF Board member, Brian Biehn lipsyncing to Steve Martin's "King Tut" was second to none. Christy's of Indiana capped off the evening by helping raise thousands of dollars during the live auction.

Save the date for the 16th Annual Starlight Express Gala – November 13, 2010. Travel back in time with us to the Roaring 20s!

2009 Friends of JCCF Donors to the Operating Fund

Please note: All donors to the operating fund are listed here, including donors, sponsors, attendees and volunteers of the Gala and other operating fund donors.

- | | | | | |
|--|---|--|-------------------------------|---|
| Allied Technologies Food Equipment, Inc. | Delta Delta Delta Chapter of Franklin College | Indianapolis Symphony | David & Abra Myers | Pam Smith |
| Anonymous | B.J. Deppe | Indianapolis Zoo | National Bank of Indianapolis | Smokey Bones |
| A Piece of Cake | Deppe Fredbeck & Boll | IndyCity Gift Baskets | Mark Need | Lyman & Corbie Snyder |
| A Trophy Business | DESIGNations | The Inn at Aberdeen, Ltd. | Mark Nelson | Loren Snyder & Jennifer Correale |
| Dean & Dorcas Abplanalp | Destination Garden Center | Joe & Jill Jansen | Newport Aquarium | South Grove Eye Care |
| Steff Adams | John & Sandy Ditmars | JP Morgan Chase Bank | Peter Norton | John & Debbie Spista |
| Jim & Beth Admire | Gary & Nancy Dorman | Steve & Kate Jarosinski | Not Just Popcorn | St. Francis Hospital |
| AirTran | Dennis Drake | Mike & Sandy Jarvis | Bill & Fran Oakes | Michael & Betty St. Pierre |
| All About You Day Spa | Dunham Rubber & Belting Corp. | Troy & Cindy Jarvis | Ossip Optometry | Steven & Deb St. Pierre |
| Kevin Allen & Audra Ferguson-Allen | Gordon Dunn & Dolores McGovern-Dunn | Johnson County Solid Waste Management District | Padgett's Signs | Step Back In Time |
| Amos Hill Associates, Inc. | Edward D. Jones Inc. | Johnson Heating & Cooling | Panera Bread | John & Pat Stevens |
| Anytime Fitness | Steve & Karen Eickman | Johnson Memorial Hospital | Paradise Bakery & Café | Doug Stewart |
| Marty & Carol Armbruster | Elliott Company of Indianapolis, Inc. | Jonathan Byrd's | Dawn Passifume | William & Elaine Stewart |
| Tom & Sue Armor | Jerry & Terri Engle | Kyle Kasting | David Payne & Garnet Vaughn | The Stitch Smith |
| Gina Atwood | Essig Golf LLC | Bill & Jennifer Kiesel | Pet Supplies Plus | Stone Creek Dining Company |
| Baker & Daniels LLP | John & Vickie Barker | John & Pat Kneebone | Tom Peters | John Strickland |
| Bargersville Liquors | Steve & Jeannie Barnett | Larry & Shari Koenes | PeyBack Foundation | Joe & Tina Surface |
| John & Vickie Barker | William Barrett | Justin & Amy Koenes | Jon Pickett | Scarlett Syse |
| Steve & Jeannie Barnett | Steve Bechman | Walter & Janette Koon | Barb Pierse | Jason Tapp |
| William Barrett | Dr. Bruce & Sherri Bender | Rick & Mary Lou Kovacs | Piper's Grand Manor | Mike Tapp |
| Steve Bechman | Benjamin's Coffeehouse | Bruce Laduke | Ralph & Andra Poehls | Texas Roadhouse Restaurant |
| Dr. Bruce & Sherri Bender | Rob & Gloria Berg | Lakeside Sounds DJ | Brian & Stacy Lane | Tom & Jill Thompson |
| Benjamin's Coffeehouse | Allen & Rebecca Berger | Eric Feathers | Stephanie Lehman | Townhouse Gifts |
| Rob & Gloria Berg | Pat & Cathy Berghoff | Fifth Third Bank | Benjamin Lippert | Trane Company |
| Allen & Rebecca Berger | Shirley Best | First Merchants Bank | Jennifer Lopez | John & Stephanie Travis |
| Pat & Cathy Berghoff | Jakim Bialek | Kregg & Vicki Fisher | M & I Bank | Larry & Pam Tucker |
| Shirley Best | Brian Biehn & Jennifer Clark | The Flower Market | Martha Mahoney | United Way of Johnson County |
| Jakim Bialek | Jennifer Billesbach | Franklin College | Mallow Run Winery | Urban Euphoria |
| Brian Biehn & Jennifer Clark | Rosie Black | Franklin Heritage/Artcraft | Malone's Catering | Kelsey VanArsdall |
| Jennifer Billesbach | Mike & Mary Blanchet | Franklin Insurance Agency | Market Street Inn B & B | Keith & Linda VanDeman |
| Rosie Black | Ben Blanton | Franklin Printing | Mitzi Martin & Jeff Atwood | Vectren Foundation |
| Mike & Mary Blanchet | Bonefish Grill | Frechette Eye Center | Richard & Macie Martin | Waddell & Reed |
| Ben Blanton | Bose McKinney & Evans | Freedom 95.9 WIDM Radio | Mayor Fred & Michelle Paris | Andy & Yvonne Walker |
| Bonefish Grill | Barbara Bryan | Justin & Amanda Furr | Susan McCarty | Kevin & Kim Walls |
| Bose McKinney & Evans | Buca di Beppo | Generations Collision Service | McCarthy Mulch | Keith & Angie Walls |
| Barbara Bryan | Build-A-Bear Workshop | Ben & Jenni Gill | Dr. Charlie & Jan McCormick | Kelsey Walls |
| Buca di Beppo | Jay & Heidi Burgess | Karl & Evelyne Glander | Tim & Connie McCurdy | Joe & Julie Waltermann |
| Build-A-Bear Workshop | State Rep. Woody Burton | Gold Coast Tanning Salon | McGee & Company Fine Jewelers | The Wampler House B'n B |
| Jay & Heidi Burgess | Zachary Burton | Grand Victoria Casino | Timothy McKone | Chuck & Suzanne Wells |
| State Rep. Woody Burton | Dan & Debbie Callon | Greenwood Animal Clinic | Trent & Cookie McWilliams | Craig & Julie Wells |
| Zachary Burton | Campbell Family Farm | Greater Greenwood Chamber of Commerce | The Melting Pot Restaurant | Richard & Becky Wertz |
| Dan & Debbie Callon | Canary Creek Cinemas | Friends of Greenwood Public Library | Mark & Jackie Mensing | Wertz Timber & Veneer |
| Campbell Family Farm | Martha Carpenter | Ron & Lisa Griesemer | Bart & Phyllis Meyer | Susan Wheeler |
| Canary Creek Cinemas | Michael Carter | John & Ellen Griffin | Mid America Health | Williams Barrett & Wilkowski, LLP |
| Martha Carpenter | Casino Aztar | John & Barbara Grimmer | Mike's Carwash | Jon & Daris Williams |
| Michael Carter | Caterpillar | Jim & Susan Haines | Jackie Miller | Jeff & Debbie Wilson |
| Casino Aztar | CenturyLink | Rick & Kathleen Hash | James & Barb Miller | Wilson St. Pierre Funeral Service & Crematory |
| Caterpillar | Carol Chappel | Heartland Community Bank | Nicol Miner | Andy & Dee Woods |
| CenturyLink | The Cheesecake Factory | Ben & Mrs. Hedenberg | Josh & Kim Minton | Barbara Woods |
| Carol Chappel | The Children's Museum of Indianapolis | Rob & Brandi Henderson | David & Raeann Moore | Mary Ellen Woods & John McNutt |
| The Cheesecake Factory | Jack Christy | James & Linda Hensley | Wesley Morgan | Bob & Nancy Wright |
| The Children's Museum of Indianapolis | Christy's of Indiana | Bob & Paula Heuchan | Kim & Eileen Mosby | Wright's Car Wash |
| Jack Christy | Cincinnati Reds | Larry & Jodie Heydon | Dr. Jay & Candace Moseley | Yellow Rose Carriages |
| Christy's of Indiana | Clark Appliances | Hickory Stick Golf Club | Mutual Savings Bank | Steve & Anne Young |
| Cincinnati Reds | Clearview Family Christmas Trees | Matt & Brooke Higdon | | Steven & Shelese Woods |
| Clark Appliances | Dr. Dave & Angie Clendening | Hilliard Lyons | | |
| Clearview Family Christmas Trees | Rick & Christi Coffey | Hillview Country Club | | |
| Dr. Dave & Angie Clendening | Dave & Susan Coffey | Thom & Amy Hord | | |
| Rick & Christi Coffey | The Columbia Club | Holiday World & Splashin Safari | | |
| Dave & Susan Coffey | Community Health Network | Hoosier Jewelry | | |
| The Columbia Club | Cooper Tires | Whitney Howard | | |
| Community Health Network | Christina Cosner | Ernest & Paula Huber | | |
| Cooper Tires | Courtyard by Marriott | Humane Society of Johnson County | | |
| Christina Cosner | Sherri Cullison | Huntington Bank | | |
| Courtyard by Marriott | Ken & Rosemary Cunningham | Imagination Station | | |
| Sherri Cullison | Daily Journal/South Magazine | Indiana Bank & Trust Co. | | |
| Ken & Rosemary Cunningham | Jon & Sandy Daniels | Indiana Downs | | |
| Daily Journal/South Magazine | Deer Valley Golf Course | Indiana Heart Hospital Physicians | | |
| Jon & Sandy Daniels | Ed & Judy Deiwert | Indiana Live Casino | | |
| Deer Valley Golf Course | | Indiana Repertory Theatre | | |
| Ed & Judy Deiwert | | Indiana State Fairgrounds | | |
| | | Indiana State Museum | | |
| | | Indianapolis Colts | | |
| | | Indianapolis Museum of Art | | |



A table of guests at the 2009 Gala ~ Ruby Sponsor, Johnson Heating and Cooling



Enriching lives, strengthening community

The Johnson County Community Foundation is the home of more than 240 funds established by donors to fund their philanthropic passions. Following is a list of our established funds and those who donated to them during 2009. These donors are enriching lives and strengthening our community.

UNRESTRICTED FUNDS

To meet ever changing needs and opportunities, donors place no restrictions on how these funds are to be used, leaving those decisions to the Grants Committee and the Board of Directors of JCCF.

The Unrestricted Community Impact Fund – Established and grown by pooled gifts from Johnson County community members and others to support community needs and opportunities in the areas of education, health and human services, arts and culture, and community development
Michael Gonterman
Greater Greenwood Chamber of Commerce
Dr. Jeffrey and Sarah Mishler
Maleta Schmidt

Anonymous Fund – Established by an anonymous donor

The Jim and Mary Barnaby Family Fund – Established by Jim and Mary Barnaby

The Jeff and Sharon Beck Praise Acres Fund – Established by Jeff and Sharon Beck

The Charles F. and Martha Deppe Fund – Established by B.J. Deppe in memory of his parents

The Directors' Fund – Established by the JCCF Board of Directors as a means for past, current and future board members to support the unrestricted grantmaking program of the community foundation

Bishop Edwin and Marion Garrison Fund – Established by Marion Garrison in memory of her husband

The Max Carter and Iris Lucille Hardin Fund – Established by Rebecca Tallman in memory of her parents

The Kay and Bob Heiskell Family Fund – Established by Tim and Patty Kegley

The Orris and Patsy Hughes Fund – Established by Orris and Patsy Hughes

The Mike and Sandy Jarvis Family Fund – Established by Mike and Sandy Jarvis

The Reis-Nichols Fund – Established by Reis-Nichols

The Dr. Don Scroggins Memorial Fund – Established by Doris Scroggins and supported by community colleagues, friends and family in Dr. Scroggins' memory

The Shaul Family Fund – Established by Steve Shaul to support a range of charitable organizations and community needs
Steven and Alma Shaul

The Daniel C. and Eddie Lea Smajo Fund – Established via bequest to support a wide range of community needs

The Beverly and Pat Van Valer Fund – This fund is in memory of Dr. Harold Richardson

The Blankenship Family Fund – Established by Mayor Norman and Linda Blankenship to fund Franklin's patriotic displays and activities

Linda Blankenship
Gracie Caudill
Susan Caudill
Thomas and Debra Pahl

The Willard Bridgewater Children's Fund – Established through the will of Willard Bridgewater, to provide support to organizations and programs that serve children and their families who do not have the financial ability to meet their educational, physical, social and/or developmental needs

The Kate Comiskey Memorial Fund – Established by Steve and Nancy Comiskey, this fund will provide financial assistance to students in the Nineveh-Hensley-Jackson and Brown County school systems for educational, health, or personal needs
Steve and Nancy Comiskey

Community Alliance to Promote Education (CAPE) Fund – This fund was established with a gift from Lilly Endowment and shall support the CAPE program in Johnson County, a program that systematically targets and improves early childhood literacy in partnership with Franklin College

The Education in Drugs, Narcotics, and Alcohol Fund – Established in the name of Robert Clark, drug enforcement officer now deceased, to provide support to schools/governmental units for drug and alcohol education, resources and scholarships

Anonymous
Louis Belch
Linda Boothe
Bob Clark Foundaton
Alison McCormick
Charles Rolph
D.A. Schlarb
Dr. Steven Smith
Betty

The Embarq Educational Excellence Fund – Established by Sprint, Inc. to provide grants to projects that advance educational excellence in youth

The Emergency Fund – Established by the JCCF board to support organizations in crisis
United Way of Johnson County

The Aunt Ginny Fund – Established by Lyman and Corbalou Snyder and friends of Virginia Mullinix as a surprise for her 85th birthday and for financial assistance to children at Webb Elementary and Indian Creek Intermediate schools
Milton and Marilyn Gilbert
Benjamin and Virginia Lippert
Lyman and Corbalou Snyder

The Good Cheer of Johnson County Fund – This fund perpetuates support for the county's needy
Donna Sipe

The Alexander Hamilton Chapter NSDAR Historical Preservation Fund – Established by the chapter to support education programs and projects that pay homage to veterans and/or preserve history

The Alexander Hamilton NSDAR Good Citizens and American History Essay Award Fund – Established by an anonymous donor to support the Daughters of the American Revolution-Alexander Hamilton Chapter's annual youth essay contest

The Marvin Dale Hamilton Endowment Fund – Established by Michael Leland Hensch in memory of Marvin Hamilton, this fund provides scholarship support to deserving graduating male seniors of Indian Creek High School

The Holiday Lighting Fund – Established by Dean Abplanalp to support the annual holiday display in downtown Franklin
Betsy Schmidt

FIELD OF INTEREST FUNDS

Donors specify a broad or specific purpose or geographic area for which the funds are to be spent and the Foundation makes grants to the most appropriate programs or organizations.

The Holiday Lighting Current Needs Fund – Established to provide support for downtown holiday lighting displays in Franklin

Dean and Dorcas Abplanalp
American Family Insurance
Anonymous
Art's Cleaners
John and Nancy Auld
Steve and Debbie Bechman
Benjamin's Coffehouse
Allen and Rebecca Berger
Betty Blakley
Chili's
Kimberly Clark
Deppe, Fredbeck & Boll
Duke Energy
Stacey Eads
First Financial
First Financial Bank Fund
First Merchants Bank
First National Bank
Robert Foist
Franklin Chamber of Commerce
Franklin Insurance Agency
Green Owens Insurance
Grill Bar
Kurt and Janet Hass
James and Mary Pat Higdon
Lee and Helen Hodgen
Holbrook Manufacturing
Huddleston & Huddleston Law Firm
Ideal Interiors
Johnson, Gray & MacAbee
Kellie Plumbing, Inc.
KORN Country Radio
Mark and Ingrid Loyd
Miller Heating & Cooling
Drs. Craig and Diana Moorman
Ted and Joan Murphy
Mutual Savings Bank
Tony Nally and Deb Brown-Nally
Mike and Marti Ramsey
Rexam
Paul and Donna Sappenfield
Rob and Janet Schafstall
Betsy Schmidt
Jack and Emma Jean Scott
Donna Sipe
John and Nancy Spiker
William and Elaine Stewart
Syndicate Theatres
Thanks for the Thyme
Steve and Anne Young
Sam and Patricia Yount
Geraldine Zehr

Johnson County Club of 100 Fund – Established by community members to provide immediate financial assistance to families of police or fire fighters that lost their lives in the line of service

The Lawrence Family Fund – Established by Albert Lawrence to provide support to agencies and programs to provide education, referral, services and/or advocacy for the treatment of those with mental illness. It will be advised by a committee of mental health service providers or consumers
Victoria Carver-Vennetti

The Herschel and Mary Mason Children's Fund – Established by Mary Mason to support children's educational, physical, or developmental needs

The Boyd Musgrave Memorial Fund – Established by his family for annual awards to honor Johnson County 4-H Clover Members who show swine at the fair

The Nineveh Community Fund – Established by the Nineveh Community Group to support programs and projects to increase the quality of life and meet the needs of Nineveh area residents

Terry and Dian Ankney
Luke and Doris Buck
Rebekah Dennis
Timothy and Mary Kate Fortner
Generation Art and Frame, Inc.
Linda Gyles
Thomas and Jonetta Knight
Patsy McKee
Vince and Marlene Miller
Taffy Pfaehler
Ernest and Wendi Rodabaugh
Steven and Jacqueline Smith
Rob and Bonnie Wilson

The Public Schools' Orchestra Fund – Established by Harold and Mildred Richardson to support orchestral education

The St. Pierre Family Youth Leadership Fund – Established in tribute to Wilson St. Pierre Funeral Service's 100th anniversary by Michael, Steven and Paul St. Pierre to support leadership training and philanthropy to youth through youth service organizations

The Sylvan Tackitt Fund – Established by Mr. Tackitt to honor his parents and grandparents, Mitchell W. and Blanche Stewart Tackitt and Silas Wright and Martha Annetta Taylor Tackitt, and to support the renovation of Banta Community Hall

The Ginger Van Valer Fund – Established to honor Ginger's many years of community service and support Greenwood beautification

The Brent Williams Memorial Fund – Established in memory and celebration of Brent Williams' life by his parents, Steve Williams and Sherry Williams Rochford, to support youth with learning disabilities

The Elmon and Lucile G. Williams Fund – Established in memory of Elmon Williams to promote responsible citizenship and education of legal and ethical behavior

The Washington Jefferson Williams Fund – Dedicated to the principles of freedom, citizenship and public safety with emphasis on serving at-risk youth

DESIGNATED FUNDS

Donors create funds designated to provide support for one or more specific organizations. Or, a non-profit organization itself may wish to establish a permanent endowment to provide a stable source of income forever (an agency endowment fund).

The Dean Abplanalp Fund – Established by Dean Abplanalp to provide operating support to the Johnson County Community Foundation
Eric and Jan Fredbeck

The Elisabeth Adams Fund – Established by the JCCF board in appreciation of an intern from Franklin College and to provide stipends to future interns

The Arms of Life Fund – Established by JCCF to encourage community wide support for the purchase and installation of railroad crossing signals for unmarked crossings
Mark and Margo Fritz

The Artcraft Theatre Fund – Established by Walter and Janette Koon to support renovation and maintenance efforts of the historic theatre by Franklin Heritage, Inc.

The Artcraft Theatre Restoration Fund – Established by Rob Shilts to promote support for the restoration

of the historic Artcraft Theatre.
Raymond and Ann Harrier

Camp Atterbury Meditation Garden Fund – Established to provide support to re-build and maintain the Camp Atterbury Meditation Garden.

W. Bob Allred
Anonymous
Tom and Judy Bastnagel
Junie and Wilma Bingham
Betty Blakely
Jack and Emma Byrum
Jim and Carolyn Carey
Norman and Mary Carr
Charles and Elsie Carter
Walter and Carol Christie
William and Shirley Cook
Emma Ruth Cooke
Jim and Loretta Crane
Diane Crane
Joseph Crane
Betty Dalton
John and Joyce Elliott
J. Patrick Forbes
William Ginn
Wayne and June Hess
F.D. and Vesta Hill
James and Mildred Hixson
J.E. and J.S. Hoadley
Verne and Jane Johnson
Howard and Doris Laut
William and Marilyn Lindstaedt
Norma Martin
Paul McClure
Jacqueline Miller
Harold and Virginia Morrical
Leon Nicholson
David Mark and Sherrie Owens
Eldon Rebhorn
Pauline Reyhorn
R.L. and C.J. Routh
Jesse and Shirley Shively
James and Cleo Simpson
Dan and Jeanie Tapke
Floyd and Alice Trueblood
William and Carol VanDeman
Harry and Ruth Westcott
Paul Williams and Maggie Taylor-Williams

CONTINUED . . .

Margaret (Margie) Beeson was the quintessential philanthropist in Johnson County. She lived in Franklin all of her life and felt that if you live in a community, you should give back to the community. When Beeson passed away in 2007, in her Will, she named the Johnson County Community Foundation the protector of her assets.



Her beneficiaries include Shiloh Community Church and Grace United Methodist Church. In addition, she set up a scholarship fund for students graduating from Johnson County High Schools.



Cultivating Charitable Giving

JCCF FUNDS & 2009 DONORS TO THE FUNDS CONTINUED . . .

Beeson Church Fund – Established by Margaret Beeson, in memory of George, Nina, Katheryn and Margaret Beeson, to support programs of the Shiloh Community Church and Grace United Methodist Church

The Jim Boggs Memorial Fund – Established by JCCF Board on its 10th anniversary to memorialize JCCF founder James A. Boggs and to support Center Grove Band Boosters

The Elba L. and Gene Portteus Branigin Fund – Established by the Branigin Foundation to provide operating support to the Johnson County Community Foundation
Branigin Foundation

The Wilma I. and Melvin S. Bush Fund – Established by the Bushes' daughters, Kathie Weddle and Karen Runnebohm, in honor of their parents and to support the preschool program of Fletcher Place Community Center

The Marian Callon Fund – Established by Marian Callon, this fund provides general operating support for the Trafalgar United Methodist Church

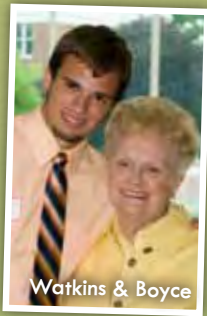
The Central Nine Career Center Fund – Established by Central Nine to encourage community support of its programs

The Circle City Ringers Bell Fund – Established by an anonymous donor to provide support to the Circle City Ringers for the purchase of new bells and equipment as needed

The Circle of Friends Fund – Established by the JCCF Board of Directors to help support annual giving to the JCCF operating fund

Dean and Dorcas Abplanalp
James and Elizabeth Admire
Brian Biehn and Jennifer Clark
Derrick and Jeanene Christy
Jon and Sandy Daniels
Ed and Judy Deiwert
Gordon Dunn and Dolores McGovern-Dunn
Carey Craig & Christy McIntyre
Craig Jim and Susan Haines
Joe and Jill Jansen
Michael and Sandy Jarvis
Walter and Janette Koon
Don and Barb Pierce
Steven and Alma Shaul
Pat Van Valer
Andy and Yvonne Walker
Craig and Julie Wells

Richard and Becky Wertz
Steve and Anne Young



At the 2009 Annual Meeting and Scholarship Awards Recognition, Laura Boyce met Jacob Watkins, the 2009 recipient of the Clarence "Buck" Boyce, Jr. Memorial Scholarship.

The Clark Pleasant Community School Corporation Fund – Established by the corporation to encourage community support of its programs

The Mason and Shinako Cox Memorial Fund – Established by Rena Cox in memory of her parents, the fund will provide operating or program support to the Humane Society of Johnson County

Rena Cox

The Sandy Daniels Fund for Leadership in Philanthropy – Established by Pat Van Valer in honor of Sandy Daniels' years of service to JCCF, Johnson County and the field of philanthropy to recognize individuals or organizations annually who selflessly promote philanthropy

The Marian W. Davis Memorial Fund – Established by Sue Christiansen and Martha Hauser to provide support to Grace United Methodist Church in Franklin, Indiana for their annual Christmas Celebration
Sue Christiansen

FCHS Musical Endowment Fund – Established by Ray & Goldie Jones and the Elizabeth Jones families to support the Franklin High School Musical or to be used at the music teachers discretion

Franklin Community School Corporation
Ray and Goldie Jones

The Franklin Symphonic Council Fund – Established by the FSC board to encourage perpetual support of the Council and its community grant making
Branigin Foundation

The Franklin Trails Expansion Fund – Established by the Franklin Parks and Recreation Department to encourage community support for the maintenance and expansion of Franklin's historic greenway trails system

The Eugene and Marilyn Glick Fund – Established by the Eugene and Marilyn Glick Foundation to celebrate their 50th wedding and business anniversary and support Central Nine Career Center's Building Trades Program

The Alma Maley and John W. Graham Memorial Fund – Established by descendants of Alma Maley and John W. Graham for the Edinburgh Wright-Hageman Public Library's outreach and educational programs

Greenwood Community School Corporation Endowment Fund – Established by the corporation to encourage community support of its programs and make grants to teachers for special projects
Isom Central Elementary School

Lowell B. & Edith G. Griffin and Raymond & Carolyn Shatto Fund – Established to provide support to education and religious needs through grants and scholarships
Hilliard Lyons
Raymond and Carolyn Shatto Estate

The Ralph Henry Trust Fund – Established to support Franklin College and Greenwood United Methodist Church

The Historic Franklin Greenway Trail Endowed Fund – Established by Suzanne Findley, this fund will encourage community support for perpetual maintenance of the trails system

The Humane Society of Johnson County Fund – Established by Margaret Beeson to support the Humane Society's mission

The Independence Park Fund – Established by Chris Johnston with the Johnson County Parks Department to support park repairs

The Interchurch Food Pantry of Johnson County Fund – Established by the board of directors and funded by an anonymous donor, this fund shall provide a means for people in the community to support the ever-increasing demands for services provided by the pantry for our county's needy and hungry

The Johnson County 4-H Fund – Established by Sandy Jarvis in tribute to her husband, Mike Jarvis, to support the 4-H program

The Johnson County Community Foundation Fund – Established by the board of directors and grown through gifts from community donors, this fund will provide perpetual support for operations and programs of JCCF to meet ever-increasing needs of our community

The Johnson County Historical Society Fund – Established by Jim and Carolyn Dresslar on behalf of Dresslar Manufacturing Company for the Johnson County Historical Society's acquisition and growth of museum collections

Johnson County Warning Sirens Fund – Established by the Johnson County emergency management agency to encourage community-wide support to purchase and install tornado warning sirens in the unincorporated areas of the county

The Johnson County Veterans Fund – Established by the late Gene Robinson on behalf of the Johnson County Veterans Service Office in partnership with JCCF to raise funds for the purchase and operations of a van dedicated to transport Johnson County veterans to and from Roudebush VA Hospital; the fund will continue to provide support for licensed drivers as needed

The Johnson County Youth Connections Fund – Established by Pat and Beverly Van Valer to support Youth Connections

The Scarlett Autumn Kapke Memorial Fund – Established in Scarlett's memory by her grandparents, Terry and Louise Hogan, to support the Greenwood Public Library children's division
Eric and Anndrea Kapke

The Capacity Building Fund – Established by the JCCF Board and funded by Lilly Endowment's GIFT IV Challenge Grant, this fund supports plans to build the technological staffing and service structure of the foundation

The Center Grove Trails Fund – Established by Anita Knowles to fund the planning, building and maintenance of trails and greenways in White River Township

The Central Indiana Land Trust, Inc. Fund – Established with a gift from CILTI trustee, Ted Harris, to preserve natural spaces in the region
Theodore Harris, Jr.

The Frank Kasting Fund – Established via bequest, this fund shall support the First Presbyterian Church of Franklin's maintenance of the pipe organ

The LeMasters Fund – Established by Lyman and Corbalou Snyder on behalf of their family in memory of J. Edwin LeMasters and Dora J. (Bobbie) LeMasters to support the Humane Society of Johnson County, Hopewell Presbyterian Church, the Johnson County Historical Society and the historical society serving Burlington, Vermont

The Debbie Long Memorial Fund – Established by Wanda Long and family to provide support to the Johnson County Public Library and the Johnson County Animal Shelter

The Manor Fund – Established for maintenance of the JCCF facilities

The Herschel and Mary Mason Fund – Established through the will of Mary Mason, this designated fund shall support the Indiana Masonic Home, the JC Historical Society, The Christian Chapel of Morgantown and the Herschel and Mary Mason Scholarship Fund

The Dolores McGovern-Dunn Fund – Established to provide JCCF operating support

The Daniel Mercer Special Project Fund – Established in memory of Daniel Mercer to benefit the FCHS Student Book writing special projects

Dean and Dorcas Abplanalp
Edward and Suzanne Albany
Doug and Kathy Andrews
Johnson County REMC
Glenn and Kim Bartholomew
Dr. Joe and Linda Beardsley
Gregory and Lisa Beasley
Jeff Parish
Dan and Theresa Bingham
LOI Limited Partnership
First National Bank
Baker & Daniels LLC
Lee Boyd
Dr. Doug and Gayla Bullington
Hugh Burns
Contractors Floor Covering, Inc.
J. Glenn Campbell
Jerry and Teresa Crossman
Thomas and Nancy Cummins
Deppe, Fredbeck & Boll
DeWee's Construction Inc.
Richard and Linda Dillion
Mark and Shawn Dilts
Victoria's
William and Jennifer Doty
Ehlen Heldman & Company
Ned and Barbara Fox
Joe and Michele Fox
Frechette Eye Center
Jay and Emily Goad
Gordon Artistic Ironworks
Forrest Grissom
Craig and Karla Grow
Marvin and Mary Lou Habicht

Ricardo and Renee Hall
Michael and Marilyn Hall
Rodger and Peggy Hall
Greg and Linda Hardin
Greta Hass
Green Owens Insurance
Dennis and Annette Henderson
Sharp Graphics
Mutual Savings Bank
Curt and Christine Holcroft
Brad and Kimberly Hole
Jim and Patricia Hopper
Hoyt Brokerage Company
Dennis Kas
Edward and Kathleen Kaucher
Michael and Tonya Kieffer
Robert and Martha Kieffer
Phillip and Judith Kunkel
Hass, Vandivier and Norris Law Firm
Ruthie Leeth
Michael and Janna Long
Mark and Ingrid Loyd
Lumsdon Chiropractic
John and Jean Madia
Flinn & Maguire Funeral Home
Matlock Ford-Mercury
Scott May
Wilbur and Ruby McCarty
Heartland Community Bank
James and Barbara Mercer
Charles and Ruth Mercer
Jacqueline Miller
Jeff and Debra Miller
Franklin Coin Shop
Frank Motley
Michael and Peggy Mundy
Jeff and Joanne Parish
James and Debbie Perkins
Joseph and Tracey Perkins
William and Shelli Reckert
James and Cindy Reese
Henderson Pharmacy
Charley and Ann Robertson
Rick and Pam Rosburh
Ron and M.L. Schludecker
David and Patricia Schmisser
Gregory and Elizabeth Scott
Newman and Georgia Sharp
Robert and Ellen Shirley
Erica Short
Todd and Denise Shuck
Tanya Smythe
Dr. Robert Stephens
Gregory and Danielle Taylor
Kurt and Brandi Terrell
Jeffrey and Mari Thielking
Farmers Insurance Group
Epler Parke Dentistry
Joseph and Nancy Tutterrow
Jeff and Debra Ulrey
Mark Yarling

The Margaret Runshe Million Fund – Established by Rick Chase, this fund supports the Johnson County 4-H program and is in memory and appreciation of Margaret for her committed service to the 4-H Council

The Nonprofit Library Fund – Established by JCCF to support a relevant and ever-growing collection of educational resources for area nonprofits via a library housed at JCCF

CONTINUED . . .

THE Legacy Society

JCCF is pleased to recognize the founding members of The Legacy Society. These individuals have shown a commitment to their community by letting us know that they have included the foundation in their estate planning through wills, trusts, and beneficiary or co-beneficiary of insurance or retirement plans.

The Legacy Society recognizes community members who are leaving a legacy, a lasting impact on Johnson County through a planned gift. Below is a list of all members who finalized gift arrangements and qualified as founding members:

- Dean Abplanalp
- Sonya Baker-Hallett
- Margaret Beeson
- Marie M. Borden
- Mrs. Clarence Boyce, Jr.
- Brian and Darci Cohoon
- Jon and Sandy Daniels
- Gordon Dunn and Dolores McGovern-Dunn
- Joe Gossman
- John and Barbara Grimmer
- Jim and Susan Haines
- Bud and Ann Herron
- Pam Hicks
- Phil and Linda Hougland
- John and Linda Knight
- Walter and Janette Koon
- Mitzi Martin
- Patsy A. McKee (and Orris A. Hughes, deceased)
- Mary Jo Mozingo
- Marie Pitcher
- Carolyn Shatto
- Steve and Alma Shaul
- William G. and Rebecca Hardin Tallman
- Nicholas J. and Peri S. Wallace and Family
- Jon and Daris Williams
- Steve and Anne Young

For more information about how to join The Legacy Society, please contact Gail Richards at 317-738-2213.



Cultivating Charitable Giving

JCCF FUNDS & 2009 DONORS TO THE FUNDS CONTINUED . . .

The PSI Energy/Cinergy Foundation Fund – Established by PSI Energy via the Cinergy Foundation to support JCCF operations and community service programs

The Rainey Family Fund – Established by Dolores P. Rainey to support the Franklin Symphonic Council

Thomas and Sue Armor
Wendy Boyle
Larry and Judith Campbell
Jean Campbell
Richard Halladay
Kurt and Janet Hass
Mary Holeman
Benjamin Lippert
William and Joyce Liverett
S.A. and C.A. Scott
Darnell Shuart Schoen

The Redwood Fund – Established to provide support to the Fair Haven Foundation

Doug and Lynda Boehme
Nancy Miller

Rex Riessen ALS Support Fund – Established by Carrie Riessen and family to provide support for families with ALS that live in Johnson County

Brett and Deborah Barnhart
Mutual Savings Bank
Rosemarie Kimmel
Benjamin and Virginia Lippert
Scott Miles

The Royal Oak Youth Golf Fund – Established by Ron West on behalf of the club's membership to support golf programs of Center Grove Community Schools

The Southwest SCORE Playground Project Fund – Established to provide support to Southwest Elementary School to build and maintain a playground at the Southwest Elementary School site

Melissa Dawson

The Special Needs Academic Camp for Kids (SNACK) Fund – Established by Special Services of Johnson County Schools to encourage community support of a summer academic camp for special needs children in the Center Grove School system, preventing the decline of academic and skills progress made during the regular school year

Ronald Henderson
Jay and Rhonda Lumsdon

The Jon and Peggy Sutton Instrumental Music Fund – Established to provide support to the Greenwood Band Parents Organization,

Inc. whose mission is to assist the Greenwood Community High School instrumental music program

Larry Ash
Harold and Lucia Crawford
William and Maria Dampier
C. Caldwell Davis
Thomas and Connie Dirks
Shelley Hall and Megan Zaborowsky
Steve Handley
Bo and Beth Hannah
Raymond and Marcia Hauser
Mark and Karen Hetrick
Richard and Barbara Jenkins
Roger and Ellen Kinsey
John and Jennifer Longworth
Patricia Meyer
Allen and Deborah Miller
Melissa Morris
Mindy Papendick
Jeffrey Russell and Susan Bushue-Russell
Dorothy Short
Gordon and Charla Simons
Penny and Lexie Stuart
Howard and Marjorie Taylor
Michael Tillman & Family
Jennifer Watson
James and Lynn Watson
Susan Watson
Paul Wingate
Peter and Nancy Wiser
Robin and Jeri Woodcock
William, Jane and David Zimmer

Beverly and Pat Van Valer Fund – Established by the Van Valers to provide operating and program support in perpetuity to the Johnson County Community Foundation

The Volunteer Fair Fund – Established to help develop volunteerism in Johnson County and bring together volunteers in our community with nonprofit agencies

Roger and Rita Abell
Americare Hospice
Baxter YMCA
Van and Jane Beers
Big Brothers Big Sisters of Central Indiana
CASA
Franklin Beautification Committee
Franklin Boys & Girls Club
Franklin United Methodist Community
Emily Gage
Gateway Services
Girls Inc. - Franklin
Humane Society of Johnson County
Jack's Dogs
JCCOAD
Johnson County Public Library
St. Francis Hospice

Wildlife Conservation & Education Growing Fund of Johnson County

– Established by the Atterbury Fish and Wildlife Area to provide support to the Atterbury Fish and Wildlife Area of the Indiana Department of Natural Resources for outdoor education and sports and recruitment events
Raymond Shepherd

The Lucile G. Williams Gift Fund – Established by Lucile Williams for JCCF operations and community service programs

The Windhorst Family Fund in Memory of Frona Mary Griffith – Established by Charles and Sarah Windhorst in memory of Sarah's mother to support the Pleasant Valley Church

The Genny Worsham Fund – Established by Genny in loving tribute to her sister, Jean Grider, a recipient of Gateway's services, to fund Gateway

The Aaron Zeiher Johnson County Sheriff's Post Fund – Established by Richard and Amy Zeiher in memory of their son, this fund will provide support for the JC Sheriff's Post, a youth leadership development program for youth exploring law enforcement as a career

DONOR ADVISED FUNDS
Donors create advised funds to achieve maximum convenience and flexibility by making contributions at any time and then making recommendations to specific charitable institutions and causes that communicate the individual's or family's charitable values.

Hugh K. and Eleanor D. Andrews Family Fund – Established via a charitable remainder trust to support a variety of community needs

The Tom and Sue Armor Family Fund – Established by Tom and Sue, this fund will support the full range of community needs and will encourage the Armor family to actively participate in impactful philanthropy

The Custer and Jessie Baker and Sally Carter Gillum Fund – Estab-

lished by Joseph and Ramona Carter to support a variety of charitable organizations

Joseph and Ramona Carter

The John K. and Marilyn R. Bass Fund – Established by John and Marilyn Bass to support Garfield Park Baptist Church and other organizations

John and Marilyn Bass

The Benevolent Protective Order of the Elks No.1818 Fund – Established by the Franklin Elks to support various charitable organizations

Corporate Cup Challenge Fund – Established to provide support for programs or activities that fulfill charitable goals and are consistent with the mission and purposes of the foundation

Roger and Rita Abell
Michael and Janice Carpenter
Larry and Jane Clark
Ronald and Patricia Collins
Daniel and Julianne Corcoran
Frank and Tonja Eagan
Brian and Lisa Fisk
Friends of the Greenwood Public Library
Dr. Richard Halstead
Indiana Bank and Trust
Indiana Members Credit Union
Kindred Hospital
Jacquelyn Kleine
Don Miller
Andrea Munn
Performance Chiropractic and Sports Rehabilitation
Hunter and Heather Rackley
Lowell and Leisa Rader
Right at Home
Arin Schellenberg
Servicemaster Restoration Services
Joe and Connie Van Valer
Wojtowicz, Inc.

The Max and Lois Fitzpatrick Fund – Established by the Fitzpatricks to support charitable organizations

The Barbara Garton Fund – Established by former Senator Robert Garton to honor his wife and provide support to meet pressing community needs

Girls Gone Generous (GGGs) Fund – Established by JCCF and funded by GGG members for programs to support women and girls

The Greater Greenwood Trails Fund – Established by community members to provide support for trails in Greenwood

Donald Cummings

The Ted and Marcia Grossnickle Fund – Established by the Grossnickles to support charitable organizations

Hansen Pass-Thru Fund – Established by Brad Hansen to support the Janet Hansen Memorial Scholarship and other charitable organizations that Janet supported
Brad Hansen

The Hicks Family Fund – Established by David and Pam Hicks to perpetuate the Hicks family charitable interests and community service values and allow future family generations to participate in the legacy of caring

The Logsdon Family Fund – Established by Ivy and Louise Logsdon to support programs that strengthen adoptive families

The Dick and Janet Martin Fund – Established by the Martins to support institutions, organizations and community projects

The Daniel P. Mercer Family Fund – Established in memory of Daniel Mercer by Jeff and Pam Mercer to make annual awards for teenagers to participate in Indiana Bulls team and awards to local youth organizations
Dean and Dorcas Abplanalp
Anonymous
Dawn Burton
Michael Carter
Darrell and Joanna Everroad
Fay Gohl
Todd Miller
Timothy and Rebecca Reineke
Trent and Melissa Staggs-Laughrey
Mitchell and Diana Stonerock
Edgar Zehr

The Peyton R. and Martha L. Vaughn Morris Fund – Established to receive earnings from a family partnership, this fund will be donor advised by the Morris Family to support a wide range of community needs and organizations

The William T. and Joan Murphy Fund – Established by William and Joan Murphy for a range of charitable programs and church organizations

Marie Pitcher Fund – Established to provide support to various local charitable organizations

Seventy-two Charities – Established to assist in building technology support for nonprofit corporations to further their missions

The W.B. and Mary Katherine Smith Endowed Fund – Established by an anonymous donor in honor of family ancestors to support worthwhile charitable organizations

The Lyman A. and Corbalou A. Snyder Family Endowed Fund – This is advised by the Snyder family to perpetuate the family's charitable interests and allow future family generations to be involved in a legacy of caring and philanthropy

The Lyman A. and Corbalou A. Snyder Fund – Established by the Snyders to support charitable organizations

The Mark E. and Amy L. Snyder Fund – Established by the Snyders to support their church and worthwhile organizations

The C. Mark and Kathyeleen E. Tompkins Family Fund – Established in memory of Mark Tompkins to support programs that advance the practice of law

Tree of Caring – Established by Teresa Waltz to take care of those in need in the greater Trafalgar community throughout the Holiday Season and beyond
Cline Doors
Jeff and Eric Eisenmenger
First Christian Church of Morgantown
G.R. Smith & Company Contracting
Jerrelle's Barber Shop
Mutual Savings Bank
Nineveh Clover Rovers
Trafalgar United Methodist Women
Teresa Waltz

The Charles B. and Kathleen O. Van Nuys Family Fund – Established by Kathleen Van Nuys to support a variety of charitable organizations
Kathleen VanNuys

The Pat Van Valer Donor Advised Fund – Established by Pat Van Valer, to support JCCF and other charitable organizations
Pat Van Valer

AGENCY FUNDS

An agency or organization may create a fund for ongoing support for operations and programs. Anyone at anytime may make contributions to the funds.

Boys and Girls Club of Franklin – supports the organization's programs and operations

Center Grove Band Boosters – Supports the programs and activities of the band programs and leadership opportunities for youth participants

Center Grove Education Foundation – Supports the mission and grants program

Center Grove Scholarship Foundation – Supports the scholarship program

First Presbyterian Church of Franklin – Provides general operating support to the church and foundation's programs

Flags for Greenwood – Supports the purchase, installation and maintenance of American flags along Greenwood streets

Franklin College – Provides general operating and program support

Franklin Community School Corp. – Supports the corporation to carry out its role and message

Franklin Symphonic Council – Provides and encourages perpetual support of the Council and its community grant making

Franklin United Methodist Community – An expression of community partnership in furtherance of its charitable mission to provide care to the indigent

Girls Inc. of Franklin – Supports the operations and programs of the agency

Greenwood Community School Corp. Foundation – Supports the corporation to carry out its role and message

Johnson County Health Foundation – Supports the programs of JCHF in its mission to serve the health needs of the community

Johnson County Historical Society Endowment – Supports the mission and program of the Johnson County Historical Society

Johnson County Youth in Philanthropy – Supports organized youth philanthropy and is a means for foundations and donors to assure the future of youth philanthropy in our community
Dean and Dorcas Abplanalp
James Larkin
John and Barb Miller
Katie Schlafer
John and Kathryn Schlafer

Morgan Trust – Provides scholarship assistance to employees of Johnson Memorial Hospital for continuing education and professional development

Reach for Youth, Inc. – Supports the operations and programming of Reach for Youth, Inc. (formerly Southside Youth Council, Inc.)
Ken and Cheryl Shearer

Rotary Club of Greenwood Scholarship – Supports the club's charitable giving programs

Tara Treatment Center – Supports the mission and operations of Tara Treatment Center, a drug and alcohol rehabilitation center

Turning Point – Supports the agency's programs and activities for victims of domestic violence

United Way of Johnson County – Supports the operations and programs of UWJC

SCHOLARSHIP FUNDS

Donors create a fund to provide scholarships so that deserving students may pursue the education they desire. Donors can specify eligibility criteria, specific schools and/or areas of study.

The Sonya Baker-Hallett Tri Delta Fund – Established by Sonya Baker-Hallett for scholarships to Tri Deltas of Franklin College who exemplify Tri Delta's mission of advancing women's education and philanthropy
Maleta Schmidt

Beeson Scholarship Fund – Established to provide scholarships for qualified students graduating from Johnson County, Indiana, High Schools who are deserving of financial assistance and who are likely to succeed as college or university students.
Margaret Beeson Estate

The Diane Black Servant Leader Award Fund – Established by the Leadership Johnson County Alumni Association to provide LJC awards
Tandy Shuck

The Earl Blemker Memorial Scholarship Fund – Provides scholarships to Greenwood Community High School academic honors students to perpetuate the spirit of caring and leadership of Earl Blemker
Mary Blemker

CONTINUED . . .



Cultivating Charitable Giving

JCCF FUNDS & 2009 DONORS TO THE FUNDS CONTINUED . . .

The John C. and Marie M. Borden Scholarship Fund – Established by Marie Borden for scholarships to Johnson County students pursuing a degree in music or music education
Edward D. Jones

The Clarence "Buck" Boyce, Jr. Memorial Scholarship Fund – Established by Laura Boyce to provide scholarships to students studying in the field of materials or mechanical engineering

The Karl Bradlyn Memorial Scholarship Fund – Established in memory of Karl Bradlyn for scholarships to seniors of area schools
Ted Willer

The Center Grove Scholarship Fund – Established by the Center Grove Scholarship Foundation to support the scholarship program
Michael Gonterman

The Donald E. Clark Scholarship Fund – Established by the estate of Donald E. Clark to provide scholarship funds to Roncalli High School graduates who participated in varsity football and are enrolling full-time in an Indiana college

Roger Cliffe Memorial Scholarship Fund – Established by the alumni of the Marc Adams School of Woodworking, Whiteland, IN, to provide scholarship assistance to students enrolled in the school

Anonymous
Harry Aristidou
Jacob Aune
Phil Coneybeer
Thomas and Suzie Davidson
Suzanne Dunham
David and Sharyl Elgin
Kathleen Fauth
Greg Fecteau
Jerry and Linda Forshee
Michael Fortune
David Gooding
Jeffrey and Nancy Greenberg
Steve Hoover
John and Malinda Knight
Lie-Nielsen Toolworks, Inc.
Kenny Long
Edward and Barbara McDonald
Douglas and Claudia McKirly
Donald and Barbara Metcalf
Richard Need
David Nesting
Mark Osgood
David Reilly
David Shepherd
Kevin Smith
Earl Spencer
Roy Tuller
William and Joann Wells
G. Robert Wiggins
Richard Wilkins

The Kate Comiskey Memorial Scholarship Fund – Established by Steve and Nancy Comiskey in memory of their daughter, a school teacher, this advised fund shall provide scholarships to deserving graduates of Indian Creek High School

The Community Scholarship Fund – Established by the JCCF board to receive gifts for scholarships

The Mary H. Craig Memorial Journalism Scholarship Fund – Established in memory of Mary H. Craig for scholarships to Franklin College journalism students

The Richard H. Crosser Memorial Scholarship Fund for Whiteland Community High School, and Franklin Community High School – Established by Richard Crosser, renamed by his company to "Memorial Scholarship" following his death, for scholarships to students from the respective schools

Davidson Brothers Scholarship Fund in Memory of Maurice and Eugenia Davidson – Established by Tom, Mike and Andy Davidson in honor of their parents to provide scholarships to deserving graduates of Greenwood Community High School to continue their education via college and/or trade school
M. Andy and Lee Ann Davidson
Thomas and Suzie Davidson

The Catherine Denney Memorial Scholarship Fund – Established by the first graduates of Leadership Johnson County and funded through the ongoing support of the LJC Alumni Association to provide scholarships for LJC enrollees
Tandy Shuck

The Dr. James Dixon Memorial Scholarship Fund – Established by Deborah Dixon, with the support of family and friends, in memory of Dr. Dixon and his dedication to education and community
Deborah Dixon

The EAA Chapter 1354 Greenwood Pilots Association Aviation Scholarship Fund – Provides scholarships to Johnson County residents or members of the Greenwood Pilots Association who pursue a career as a commercial pilot, air transport pilot or aeronautical engineering at a certified FAA-approved university

The Franklin Dollars for Scholars Fund – Supports deserving students of Franklin High School
Branigin Foundation
Kappa Kappa Kappa – Zeta, Franklin

The Franklin Rotary Club Scholarship Fund – Established by the Franklin Rotary Club

The Jed Moses Fulmer Scholarship Fund – Established by Jay and Karen Fulmer in memory of their son, the fund provides scholarships to students pursuing a career in law enforcement who possess good sportsmanship and leadership
Deloris Amick
Douglas, Cyndie and Rachel Campbell
Kenneth and Debra Campbell
Dallas and Barbara Campbell
James and Martha Compton
Joseph and Nancy DeHart
Jim and Carolyn Fulkerson
Robert and Ruthann Hensley and Family
Charles and Angie Hart

Nicki Kasting
Kyle Kasting
Thomas and Phyllis Kasting
Donna Kelley
Josh and Kim Minton
Ken Muncy
Ronald and Candace Reese
Pamela and Madison Rossman
Randall and Pamela Rossman
Paul Rossman
William and Elaine Stewart
Stinson Dayne
Brad Tittington
Raymond and Sharon Williams
Claude and Barbara Wood
Wright's Carwash

The Molly K. Gibson Memorial Scholarship Fund – Established by Bob and Pam Gibson, friends and family, to perpetuate Molly's memory and to provide scholarships for Franklin High School swim team members
Shannon Benedict
Andy and Erika Bridge
Joseph and Kelly Brouger
Benjamin and Kristyn Davidson
Derek Dyer
Betty Gibson
Michael Gonterman
David and Nisa Hensley
J. Mason Hughes
Clifton and Vicki Jones
Timothy Litwin
Jay and Rhonda Lumsdon
James and Lisa Mercer
Natalie Moster
Rebecca Oliver
Jonathan and Stacie Oliver
Robert Petersen
Michael Sniadecki
C. Scott and Rachel Stafford
Brad Stafford
Megan Taylor
Richard and Linda Witt
Wright's Carwash

Nisha Grimm Memorial Scholarship Fund – Established by Jerry and Sheron Miller and given in memory of Nisha Grimm, class of 1988, to provide scholarship monies to graduating seniors from Franklin Community High School who are pursuing a college degree in medicine, with a priority given to nursing

Greenwood White River Rotary Scholarship Fund – Established by the Greenwood White River Rotary Club to award scholarships for post-secondary education to graduating seniors of Center Grove High School
White River Rotary – Greenwood



Founders of the The Women's Leadership Fund held a fun and successful fundraising event at the Bonefish Grill in Greenwood. The event raised more than \$2,500. The fund was established in 2009 to provide scholarships for women business owners who have applied and are accepted to the Leadership Johnson County Program of Franklin College or other leadership programs deemed appropriate.

2009 Memorial gifts

The Jim Halik "Kids Are Special People" Scholarship Fund – Established in 2004 by Franklin school teachers and friends to honor the years of service of Jim Halik as educator, this fund shall provide scholarships to deserving graduating seniors of Franklin Community High School who plan to pursue a teaching career

Janet Hansen Memorial Edinburg Scholarship Fund – Established to provide scholarships to graduating seniors from Edinburg High School

Brad Hansen
Chris and Vanessa Hansen
Kenneth and Carol Sue Hansen
Nancy Plake and Judy Hess
Charles Hessman
Don and Barb Pierce

Johnson County Fair Board Scholarship Fund – Established to provide scholarships to 10-year Johnson County 4-H members

Johnson County 4-H Fair Board

The Hamann Family Memorial Scholarship Fund – Established by the Hamann family to provide scholarships to students in need of financial assistance for post-secondary education

Steve and Penny Beasie
Walter and Holly Beaver
Nancy Beaver and Leah Hays
M. Kathleen Bockelman
Richard and Mary Bresnahan
John and Susan Caito
Patrick and Jill Carmody
R. Scott and Cassidy Connell
Natalie DiPietro
Brian Engman
Robert and Janet Feczko
Gene and Laura Hack
Steve Hamann
Carolyn Hamann
Mary Hamann Living Trust
John and Patricia Jentz
J. and Rebecca Klee
Jeffrey and Kelli Knapp
Keith and Karyn Kraske
Chris and Linda Linn
David and Rachel Luebbe
Kimberly Owens
Jeff and Kim Peters
David and Michelle Phares
Timothy and Cheryl Phillips
Christopher and Molly Powell
Doris Ruschhaupt
Jacob Ruschhaupt
Will Ruschhaupt
Max and Diana Ruschhaupt
Gerard and Margaret Shepherd
Bradley and Ellen Soutz
Dale and Jennifer Strabala
Jessica Thomas
Marilyn Thompson
Charles and Patricia Tokarek

Michael and Anna Wardell
Martin and Tami Zinser

The Ralph Henry Scholarship Fund – Provides scholarships to deserving Greenwood High School seniors

Ethan C. Hertler Memorial Scholarship – Established to provide scholarships to Franklin Community High School graduating seniors pursuing a degree in secondary math education

Betty Blakley
Linda Jacobsen

The Kenneth Wayne Himsel Memorial Scholarship Fund – Established by family members to provide scholarships to Greenwood High School students with experience or interest in the National Guard or ROTC

Johnson County Community Foundation Scholarship Fund – Whiteland Community High School – Established to provide scholarships to graduating seniors of Whiteland High School

The Greg Lee, Jr. Memorial Scholarship Fund – Established by Greg Lee, Sr. and Cindy Driver to provide college scholarships to Whiteland Community High School students possessing good sportsmanship and leadership

Ron Condra
Janis Daugherty
Bruce and Cindy Driver
Carey and Carla Hall
Greg Lee
Dr. Vickie Poole-Hoffman
Patrick and Helga Scaringe
Max and Patricia Tichenor
Tynan Equipment

Lilly Endowment Community Scholarship Program Fund – Established by Lilly Endowment Inc. to provide full-tuition scholarships to county residents

The Rick Machledt Memorial Fund – Established by Greenwood Community Schools to provide a scholarship to a senior active in the athletic program

Greenwood Community School Corporation

The Mitzi Harris Martin Scholarship Fund – provides scholarships to deserving individuals already working in the long term health-care field that wish to pursue an LPN or CNA designation

Mitzi Martin and Jeff Atwood

The Herschel and Mary Mason Scholarship Fund – Established through the will of Mary Mason, this fund will provide scholarships to support the post-secondary education in nursing of graduates of Franklin Community High School

The Maurice "Mo" Hughes McCarty Fund – Established by Georgiann McCarty and community friends to perpetuate the memory of Maurice "Mo" McCarty and provide scholarships to agricultural science students

William, Jane and David Zimmer

Charles Owen "Corky" McCormick IV Memorial Scholarship Fund – Established by Charles McCormick III and Janet McCormick in memory of their son for post-secondary education scholarships for Johnson County students studying theatre performance or education

David Mitchell Memorial Scholarship Fund – Established by the Sons of the American Legion Post #205, to provide scholarships for graduating seniors from Franklin Community High School who show excellence in education, community service and Patriotism, and who must have veteran family member

Sons of the American Legion

The W. Joan Murphy Scholarship Fund – Established by Ted Murphy in honor of his wife to provide scholarships to Franklin Community High School seniors planning to major in education

Ted and Joan Murphy

Blair Parsley Memorial Scholarship Fund – Established by Edward and Denise Parsley in memory of their son to provide scholarships for post-secondary education at accredited schools to study aviation and become a pilot, either commercial or transport

The Marion A. and Eva S. Peeples Scholarship Fund – Provides scholarships to students statewide to pursue degrees in nursing, dietetics, and/or technology education

The Psi Iota Xi Judy Georges Memorial Scholarship Fund – Established by Psi Iota Xi membership in memory of Judy Georges and to provide scholarships to students at Greenwood, Whiteland and Center Grove high schools

Mary Jean Alexander

Jim Blakely

Norman Blankenship

Jean Campbell

Jeff Caudill

Martha Crane

John Crane

Jordan Crist

Jed Fulmer

Molly Gibson

Bob Gibson Sr.

Janet Hansen

Donald Martin

Captain Robert Miller

Dr. Ernest and Mrs. Doris Mishler

Blair Parsley

Dolores Rainey

Rhianna Schmidt

Milton Trotter

Wayne Walters

Tom Wardrup

Omer Wildman

Gary Zimmer

Zack Zimmer



Gibson



Fulmer



Hansen



Rainey

CONTINUED . . .



Cultivating Charitable Giving

JCCF FUNDS & 2009 DONORS TO THE FUNDS CONTINUED . . .

Refuge Scholarship Fund – Established to provide scholarships to students of accredited institutions of higher learning and in particular to graduates of Greenwood High School who show strong academic achievement, community service and financial need

Jack W. Scherer Memorial Scholarship Fund – Established by Jack Scherer in memory of Jack W. Scherer, past principal of Union Elementary School, to provide scholarships to graduating seniors from Franklin Community High School to pursue a post-secondary degree in education

Maude T. Scott Memorial Scholarship – Established by trust transfer, this fund shall provide scholarships to deserving graduating seniors of Franklin Community High School who are pursuing post-secondary education in nursing

The Sertoma Club of Greenwood Dr. Robert L. Hamill Memorial Scholarship Fund – Established in memory of Dr. Hamill by his wife, Beverly, to provide scholarships to graduating seniors of Johnson County who are pursuing a major in microbiology, chemistry or biochemistry with the Sertoma Club of Greenwood serving as the selection committee
Sertoma Club of Greenwood

Shaul Family Parent Memorial Scholarship – This scholarship fund was created by the Shaul Family in memory of Steve's father for the primary purpose of providing support to deserving seniors of FCHS who have lost a natural or adoptive parent

The Laura B. Smith Memorial Fund – Established by Hershel Smith in memory of his wife, this fund will provide scholarships to graduating seniors from Whiteland Community High School or residents of Whiteland to pursue a degree in nursing

The Robert Day and James H. Smith Trumpet Memorial Scholarship Fund – This fund memorializes these musicians and provides financial assistance for students to study trumpet and is advised by the Indianapolis Brass Choir
James Williams

The Irv Stringer Memorial Scholarship – Established in memory of Irv Stringer by David Stringer for scholarships to Center Grove seniors who play in the female soccer program

The Umbarger Show Feed Scholarship Fund in Memory of Steve Taylor – Established by Roy Umbarger and Sons Inc., and friends and family of Mr. Taylor to provide scholarships to students active in 4-H and other volunteer activities

The Union Township Alumni Association Scholarship Fund – Established by the association to provide scholarships to residents of Union Township

The URS Corporation Scholarship Fund – Established by the URS Corporation to provide scholarships to graduating Greenwood High School seniors to attend Ball State University's School of Architecture

Judith Butler Van Valer Art Scholarship Fund – Established to provide scholarships to graduating seniors from Greenwood High School pursuing a degree in art
John Butler
Kelvin and Joan Maxfield

The James A. Volland Scholarship Fund – Established by Betty Volland to memorialize her husband and for scholarships to students at Franklin Community High School
Key Foundation
Key Private Foundation

Women's Leadership Fund – Established to provide scholarships for women business owners who have applied and are accepted to the Leadership Johnson County Program of Franklin College or other leadership programs deemed appropriate
Linda Blankenship
DECO Group
Dreyer & Reinbold of Greenwood
Tommie Foster
Vicki Garrett

Greater Greenwood Chamber of Commerce
Katte Hanner
Heartland Community Bank
Indiana Heart Physicians
J.L. Johnson Fine Jewelers
Johnson County Community Foundation
Myers Protection Services, Inc.
My New Bag
Kimberly Nidiffer
Selective Seconds Consignment
Sharon Sandmeyer
Julianna Shadinger
Tandy Shuck
Simons Bitzer and Associates PC
The Stitch Smith
Tilson HR
Van Valer Dispute Resolution
Lee Ann Wilbur
Tammy Young

Aaron Zeiher Memorial Scholarship – Established by Richard and Amy Zeiher in memory of their son, Aaron, for post-secondary education scholarships for deserving individuals who are pursuing a degree in law enforcement or criminal justice

We take great care to include all of our donors. For errors or omissions, please contact JCCF at 317-738-2213.



Giving options

There are many ways to give. The key is to find the best option for you. The community foundation offers different types of funds to best suit your particular needs and wishes – and to accomplish your giving goals and dreams.

UNRESTRICTED FUNDS – You may contribute to JCCF's "unrestricted" community impact fund. You may also establish a named unrestricted fund or, as with all gifts, remain anonymous. Unrestricted funds allow the greatest flexibility in responding to emerging opportunities, enabling the foundation to respond to the county's changing needs, support the creation of innovative responses to county problems and thereby enhance the quality of life in Johnson County.

FIELD OF INTEREST FUNDS – You may restrict your contribution to one or more fields of interest, such as education, health, social services, the arts and preservation/conservation. The foundation will offer grants to programs or organizations within the specified field.

2009 Circle of Friends

JCCF strives to make it easy for civic-minded individuals to impact their community. By “entering” the Circle of Friends, you join a group of people sharing efforts to address community challenges and make Johnson County a better place to live and raise families. Following we recognize those who joined our Circle of Friends in 2009.

- Dean and Dorcas Abplanalp
- James and Elizabeth Admire
- Brian Biehn and Jennifer Clark
- Derrick and Jeanene Christy
- Jon and Sandy Daniels
- Ed and Judy Deiwert
- Gordon Dunn and Dolores McGovern-Dunn
- Jim and Susan Haines
- Joe and Jill Jansen
- Michael and Sandy Jarvis
- Walter and Janette Koon
- Carey Craig and Christy W. McIntyre Craig
- Don and Barb Pierse
- Steven and Alma Shaul
- Pat Van Valer
- Andy and Yvonne Walker
- Craig and Julie Wells
- Richard and Becky Wertz
- Steve and Anne Young



DESIGNATED FUNDS – You may designate one or more of your favorite charities you would like to support through your gift.

DONOR ADVISED FUNDS – You may make recommendations each year for distribution to specific charities. Ultimate decisions must be made by the foundation, but your recommendations are given serious consideration by the board.

AGENCY OR ORGANIZATION FUNDS – An agency or organization may create a fund. Many boards or members of organizations have established agency funds for ongoing support for operations and programs. This is a practical and administratively efficient way for nonprofit groups to ensure

and sustain future funding. Anyone at anytime may make contributions to the funds through outright gifts, bequests, or other planned giving options.

SCHOLARSHIP FUNDS – You may create a scholarship fund through the community foundation to help students pursue educational opportunities. The foundation has the expertise and staff to administer the necessary processes to help make your scholarship have the greatest impact possible.



INVESTMENT UPDATE

Dean J. Abplanalp

INVESTMENT COMMITTEE CHAIR



With the collapse of the financial markets in the second half of 2008 and beginning of 2009, community foundations across the country were forced to re-examine their investment processes and the ways in which they serve as fiduciaries.

Our first task at JCCF during this past fiscal year was to make several positive strides in strengthening our Investment Committee with members who are committed to our mission. We expanded the Investment Committee to nine members with a broad range of business backgrounds and industry investment expertise.

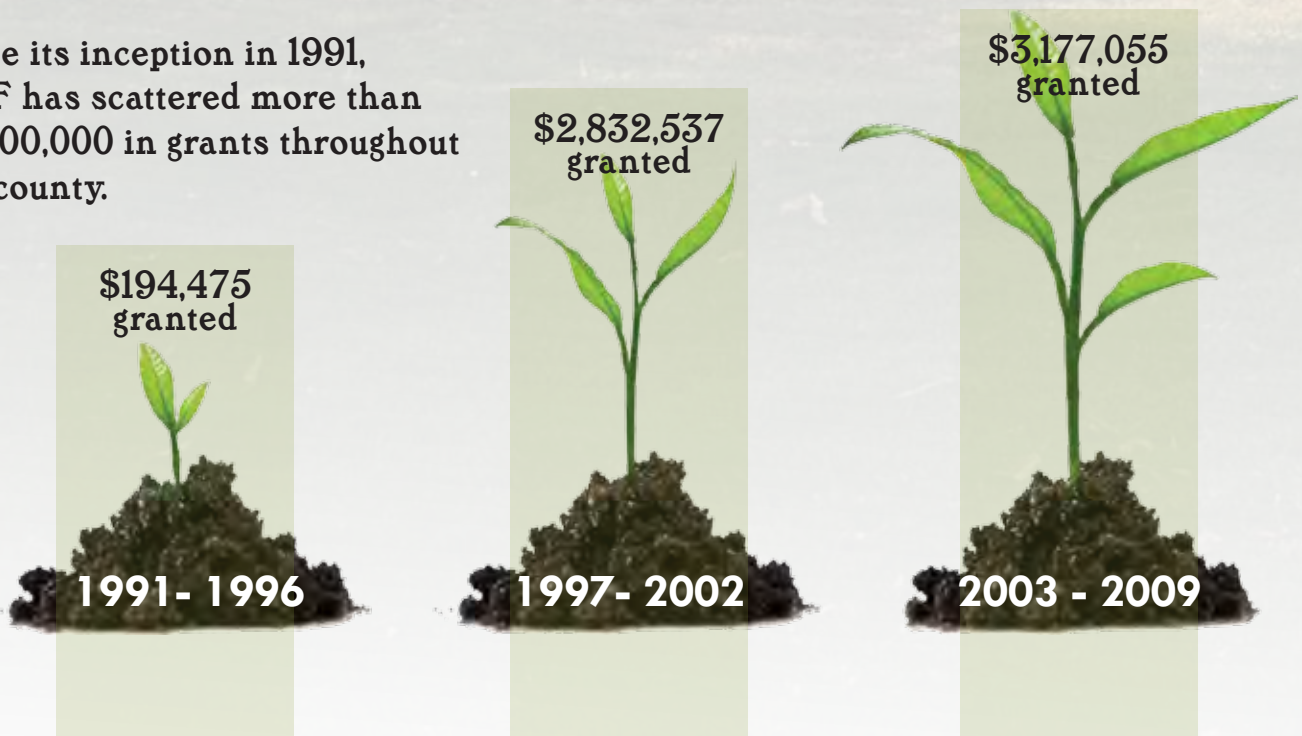
We conducted a thorough examination of our Investments, our Depositories, a detailed review of our Investment Policy Statement, and finally a detailed analysis of our expenses including present and past historical performances. The data used for this analysis was obtained from several outside sources and included best practice standards obtained from the National Council on Foundations. This process has led us to make several changes which we believe will allow us to improve upon our results, lower our expenses and preserve the assets which have been entrusted to our care.

From a macro economic standpoint the world was able to just barely avoid an entire global financial and economic collapse in the first quarter of 2009. Only bonds and cash produced positive results in 2008. Virtually every other investment asset class showed substantial losses. The market bottoms were reached in early March at the height of the financial crisis and began a powerful rebound that continued through the remainder of the year. During the second half of 2009 markets across all of the major indexes have improved significantly and thus our results for the year ending December 2009 were very positive. For the year ending December 31, 2009 the Johnson County Community Foundation Endowment account gained 21.62%. These results exceeded the broad market industry index benchmarks that we use for comparison purposes.

While the markets have improved dramatically, the economy is slowly showing signs of improvement. Several concerns still weigh heavily on the minds of investors. These issues include the significant decline in the value of the dollar, large increases in unemployment, weak housing demand, foreclosures, weak auto markets, health care legislation and its anticipated impact on the economy, deficit spending and future levels of inflation.

While we cannot predict the future, the JCCF Board of Directors and the Investment Committee Members are committed to pursuing a policy of diversification among various asset classes and preservation of the value of the funds entrusted to the foundation and our community.

Since its inception in 1991, JCCF has scattered more than \$6,000,000 in grants throughout our county.



2009 JCCF Financial Profile

Assets	December 31,		Revenue, Support and Expenses	December 31,	
	2009	2008		2009	2008
Current assets:			Support:		
Cash and cash equivalents:			Contributions	\$ 2,305,773	\$ 803,166
Cash held for current operations	\$ 60,596	\$ 75,194	Grants from other organizations	<u>301,301</u>	<u>231,606</u>
Cash held for nonpermanent funds	302,747	212,069		2,607,074	1,034,772
Cash held for endowment funds	<u>122,464</u>	<u>143,176</u>	Revenue:		
	485,807	430,439	Investment income:		
Assets held for sale	<u>125,000</u>	-	Unrealized gains (losses)	1,908,614	(2,977,264)
	610,807	430,439	Realized losses	(455,966)	(152,073)
Property and equipment—net	388,206	392,790	Investment earnings—net	<u>288,830</u>	<u>415,280</u>
Long-term investments	12,535,924	8,771,494		1,741,478	(2,714,057)
Beneficial interest in trust receivables	<u>1,325,543</u>	<u>1,134,904</u>	Fund-raiser income	78,742	83,415
			Change in value of trusts	190,639	(349,508)
			Service fees	26,059	24,343
			Other	<u>33,084</u>	-
				<u>2,070,002</u>	<u>(2,955,807)</u>
Total Assets	14,860,480	10,729,627	Total Support and Revenue	4,677,076	(1,921,035)
Liabilities			Expenses:		
Current liabilities:			Program services:		
Accounts and other payables	2,393	3,866	Grants made	207,228	645,038
Deferred revenue	3,600	23,400	Less grants made from agency endowments	<u>(7,206)</u>	<u>(17,946)</u>
Agency endowments held for others	<u>492,055</u>	<u>422,113</u>	Grants made—net	200,022	627,092
			Other program services	<u>125,724</u>	<u>91,297</u>
				325,746	718,389
Total Liabilities	498,048	449,379	Supporting activities:		
Net Assets			Management and general	122,988	109,630
Unrestricted	13,003,309	9,114,428	Fundraising	<u>146,158</u>	<u>146,875</u>
Temporarily restricted	<u>1,359,123</u>	<u>1,165,820</u>		<u>269,146</u>	<u>256,505</u>
Total Net Assets	14,362,432	10,280,248	Total Expenses	594,892	974,894
Total Liabilities and Net Assets	\$14,860,480	\$10,729,627	Change in Net Assets	4,082,184	(2,895,929)
			Net Assets, Beginning of Year	<u>10,703,241</u>	<u>13,176,177</u>
			Net Assets, End of Year	\$14,362,432	\$10,280,248

“We make a living by what we get . . . we make a life by what we give.”

WINSTON CHURCHILL

Financial statement and audit report prepared by Capin Crouse LLP. The full report is available for review upon request.



Guiding gardeners

The community foundation is governed by a volunteer board of directors who are representative of the community and recognized for their involvement in civic affairs. The foundation operates with a small, efficient team of staff and consultants, who actively cultivate charitable giving by running the day-to-day operations of the foundation from it's home on South Main Street in Franklin.



Executive Committee

Back Janette F. Koon, *secretary* | Anne Young, *chair*
| Richard Wertz, *chair elect* | Front Susan J. Haines,
treasurer | Craig Wells, *past chair*



Staff

Gail Richards, *president & CEO*
Kim Minton, *director of grants & scholarships*
Nancy Wright, *office administrator*

The Board of Directors develops and maintains the Foundation's mission, engages in strategic planning, hires executive staff, carries fiduciary responsibility for all funds, sets policy and makes grant decisions.

The Board acts independently of government or any other public or private entity. Each member is elected to serve a four-year term without compensation.

CREDITS:

- Staff and board photography by Phil Smith
- Design, copy and photography by Maleta Schmidt, DESIGNations
- Copy, editing/proofing by JCCF Staff and Board and Kelsey Walls, intern
- Additional photography by Diane Fisher, Kelly Lynch and iStock Photography
- Printing and distribution by *the Daily Journal*
- Most of the photos in this report were taken in Johnson County



2010 BOARD OF DIRECTORS



Dean J. Abplanalp



James R. Admire



Brian Biehn



Derrick Christy



Ed Deiwert



Dolores McGovern-Dunn



Susan J. Haines



Jill Jansen



Amy Kelsay



Janette F. Koon



Chad McCullough



Steve Shaul



Steve Spencer



Pat Van Valer



Andy Walker



Joe Waltermann



Craig Wells



Richard Wertz



Anne Young

GRANTS COMMITTEE

Reviews, analyzes, approves and recommends fund expenditures and impact strategies

Craig Wells, *chair*
Walt Aldoriso
Dick Martin
Dolores McGovern-Dunn
Barb Miller
Seth Perigo
Steve Shaul
Anne Young

INVESTMENT COMMITTEE

Reviews, analyzes, approves and recommends fund investment strategies

Dean Abplanalp, *chair*
Brian Biehn
John Chiarotti
Ed Deiwert
Bill Kiesel
John Stevens
Pat Van Valer
Andy Walker
Richard Wertz

DEVELOPMENT COMMITTEE

Reviews, analyzes and recommends planned giving, fund development, marketing and fundraising structures and strategies

Richard Wertz, *chair*
Derrick Christy
Jill Jansen
Bob McGee
Joe Waltermann

SCHOLARSHIP COMMITTEE

Reviews, analyzes, approves and recommends scholarship expenditures

Steve Shaul, *chair*
Jim Admire
Steve Brown
Virginia Davis
Amy Kelsay
Mitzi Martin
Jenny Mowrey
Dan Murphy
Barb Pierce
Anne Young

FINANCE COMMITTEE

Reviews, analyzes, recommends and approves budgets, investments and other organizational financial matters of the foundation

Ed Deiwert, *co-chair*
Andy Walker, *co-chair*
Dean Abplanalp
Brian Biehn
Barb Bryan, Accounting Consultant
Susan Haines
Pat Van Valer

GALA COMMITTEE

Plans and executes the annual fundraising gala

Jennifer Clarke, *co-chair*
Brian Biehn, *co-chair*
Rosemary Cunningham
Lisa Griesemer
Maleta Schmidt
Kim Shell

WE EXTEND A VERY SPECIAL

Thank you

TO OUR RETIRING 2009 BOARD MEMBERS:

Christy McIntyre Craig | J. Michael Jarvis | Barb Pierce

Your service to the Johnson County Community Foundation is greatly appreciated.

BOARD MEMBERS PAST AND PRESENT

Dean Abplanalp
James Admire
Walt Aldoriso
Marty Armbruster
Tom Armor
Sonya Baker-Hallett
Dwight Beall
Julie Bever
Brian Biehn
Steve Black
Dr. Robert Brenton
Dick Brutus
Marian Callon
Ruth Callon
Rick Chase
Derrick Christy

Sherri Coner Eastburn
Sandy Daniels
Ed Deiwert
Clark Dickerson
David Edds
Jeff Eggers
Jerry Engle
Ruth Freese
Dr. Pat Garvey
John Grant
Barbara Grimmer
Susan Haines
Jim Halik
Harriet Henry
Howard "Bud" Herron
Pam Hicks

Gail Hoffman
Kevin Hoover
Mary Hotopp
Sandi Huddleston
Lewis "Jake" Jacobs
Jill Jansen
Mike Jarvis
Sandy Jarvis
Bob Kaspar
Jeanna Keller
Amy Kelsay
Diane Killion
Rod King
Linda Knight
Larry Koenes
Janette Koon

Bob Malinka
Jim Manak
Mitzi Martin
Ron Mayes
RJ McConnell
Chad McCullough
Janet McDuffey
Dolores McGovern-Dunn
Christy McIntyre Craig
Patsy A. McKee
Barb Miller
Lowell Miller
Dr. Ted Murphy
Jim Oxley
Al Pickett

Barb Pierce
Kerry Prather
Dr. William Province II
Jim Rhoades
Gail Richards
Dr. Mildred Richardson
Donna Rund
Dr. Rex Sager
Gerald Sargent
Janet Schafstall
Robert H. Schafstall
Kurt Schletzer
Steve Shaul
Lyman Snyder
Steve Spencer
Jennifer Stone

Mike St. Pierre
Larry Taulman
Dr. Terry Thompson
Rowana Umbarger
Ginger Van Valer
Pat Van Valer
Steve Vertrees
Nancy Voris
Andy Walker
Joe Waltermann
Craig Wells
Richard Wertz
Jon Williams
Mike Wirey
Anne Young



Corey



Strickland



Miller & Wells

2009 Annual Meeting & SCHOLARSHIP AWARDS RECOGNITION

The 2009 Annual Meeting featured scholarship winners, donor recognition, motivational guest speakers and awards.

The program featured the first Foundation Spirit Award presented to community volunteer, Barb Miller. She volunteers to make Johnson County a better place to live and work. Miller has recently organized numerous volunteer fairs throughout Johnson County, which were designed to raise awareness of the foundation and other nonprofit organizations and to assist those organizations in recruiting volunteers to their cause.

Guest speaker John Strickland is a retired Franklin High School teacher and a world-renowned artist. The audience was treated to stories of his life which helped inspire his paintings.

As one of the youngest elected officials in Johnson County history, Brent Corey, keynote speaker, encouraged community involvement. He reminded the audience that the foundation and the community will not grow without the generosity of the donors.

SAVE THE DATE
SATURDAY, NOVEMBER 13

JCCF STARLIGHT EXPRESS GALA
THE ROARING 2010

CALL JCCF AT **317.738.2213**
TO SPONSOR

2010 PLATINUM SPONSOR



Want To Make Your Customers Love You?

We give you and your company
THE POWER OF PRESENTS!

- Corporate Gifts
- Appreciation Marketing Programs
- Business Development
- Client Retention
- Employee Appreciation
- New Employee Gifts
- New Client Gifts
- Positive Public Relations
- Damage Control

"Everything she does is awesome. She has tons of creative ideas within my budget and I LOVE that I can customize my logo on the ribbon. I love her work"
-Amanda, Marketing Consultant

Call Deb today for a **FREE** gift and complimentary marketing consultation.

www.indycitygiftbaskets.com
deb@indycitygiftbaskets.com
317.782.GIFT



Keeping our
community strong
is the heart
of what we do.

Through thick and thin, Heartland Community Bank has always been there for the residents of Johnson County. We understand the value of a strong community and we're here to keep it that way. We work hard every day to make a difference to our customers and in our community. It's a whole new way to experience banking. See for yourself today by visiting us online at www.bankwithfriends.com or by stopping by any of our six convenient locations.



www.bankwithfriends.com

Bargersville
507 Three Notch Lane
317.422.1370

Franklin
420 N. Morton
317.738.3915

Greenwood East
2433 East Main Street
317.859.6330

Greenwood West
489 S. State Road 135
317.881.3915

Greenwood South
800 US 31 South
317.885.7371

New Whiteland
215 N. US 31
317.535.3915

Savvy Dames

PRESENTS
2nd Annual

An Afternoon at the Oscars

Proceeds from
this event support
The Women's Leadership Fund.



Thank you to our
2010 Premier Sponsors
Matt Green & Vonnie Lute



(FOUNDERS: Jill Bode, Susan McCarty, Erin Smith and Deb Walton)

We are ready to listen –
and help with
difficult cases.



- Personal Injury • Medical Malpractice • Wrongful Death
- Criminal Defense • Divorce and Separation • Paternity
- Child Support, Child Custody, and Visitation Rights
- Business and Corporate Law • Real Estate Transactions

We specialize in difficult cases. Please contact us for further information about how we may be of service to you.



250 E. Jefferson St.
Franklin, IN 46131
317-736-1982
www.hanlawfirm.com

BE READY FOR TODAY

PREPARE FOR TOMORROW

From investing for today to retirement planning for tomorrow, you want to make the most of your earnings. Please contact me today for a complimentary consultation.

Dean J. Abplanalp
Senior Vice President, Investments

1499 Windhorst Way, Suite 200
Greenwood, IN 46143

317-885-0114 • 800-382-9487

317-885-2609 Fax

dean.abplanalp@raymondjames.com

RAYMOND JAMES & ASSOCIATES, INC.
Member New York Stock Exchange/SIPC

©2008 Raymond James & Associates, Inc., member New York Stock Exchange/SIPC 58881107-RIA2 02/08 3.75" x 3.25"



Johnson County Community Foundation
398 South Main Street | P.O. Box 217
Franklin, Indiana 46131
317.738.2213 | jccf.org

NON-PROFIT ORG.
U.S. POSTAGE
PAID
INDIANAPOLIS, IN
PERMIT NO. 110

Cultivating Charitable Giving

Grow your passion

Interested in being more involved with the foundation?

CONTACT US TODAY ABOUT:

- Ongoing sponsorships (business opportunities)
- Volunteer opportunities
- Joining our e-newsletter list



The Johnson County Community Foundation meets national

standards for community foundations. Community foundations that achieve these standards demonstrate excellence in important areas, including client service, fiscal accountability, grantmaking and community leadership.

The Johnson County Community Foundation, established in 1991, is a nonprofit organization created by and for the people of Johnson County to help make the community a better place for everyone.

Our vision The Johnson County Community Foundation strives to be the philanthropic leader in improving our community, today and in the future, by connecting people who care with causes that matter in Johnson County.

Our mission To enhance the quality of life for all citizens of Johnson County, now and for generations to come, by building community endowment, addressing needs through grantmaking, and providing leadership on key community issues.

For giving, For good, Forever